

## 80MM Thermal Printer with Auto Cutter

(Model No.: OCPP-806)

### Features:

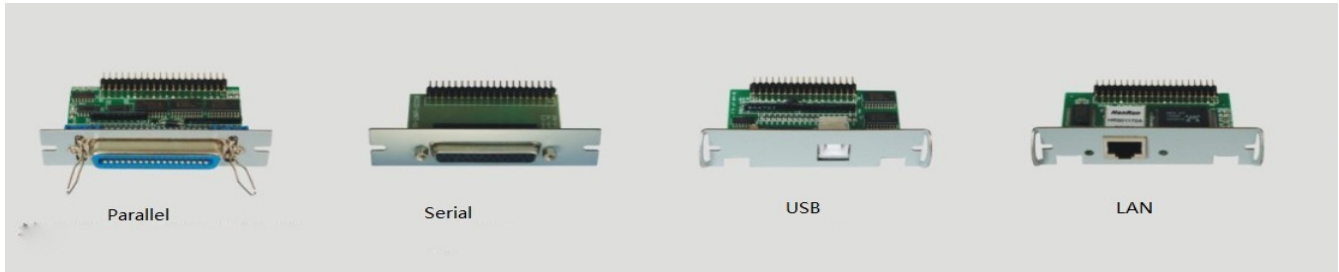
1. High Printing Speed up to 300mm/second;
2. Reliable Auto Cutter built-in;
3. Multiple interfaces available: USB+ Serial+ Ethernet (10/100MB);
5. Support multiple 1D and QR code types printing;
6. Support multi international languages;
7. SDK for Android available;
8. Reliable printer head with 100km life;
9. Easy paper-roll installation, easy maintenance and rational structure;
10. Compatible with EPSON ESC/POS commands.



### Specification:

Printing Method	Direct Thermal
Printing Character	576 dots/line, 512 dots/line, ANK characters
Font	A: 12*24dots,1.5(W)*3.0(H)mm; B: 9*17dots,1.1(W)*2.1(H)mm
Simplified/Traditional Chinese	24*24dots, 3.0(W)*3.0(H)mm
Barcode Type	UPC-A/UPC-E/JAN13(EAN13)/JAN8(EAN8)CODABAR/ITF/CODE39/CODE93/CODE128
Printing Speed	300mm/sec
Interface	Serial+USB+Ethernet
Printing Command	Compatible with ESC/POS
Drivers	Win9X/Win2000//Win2003/Win Vista/ Win 7/Window XP /, compatible with ESPON
Printing Width	79.5±0.5mm( print width 72mm)
Paper Diameter	83mm
Paper Thickness	0.06-0.08mm
Cutter	Auto cutter
Printing Reliability	100km
Power	DC24V/2.5A
Temperature	0-45 degree
Contrast Humidity	10-80%
External Dimension	195D*155W*148H mm
Gross Weight	2.70kg
Package	Inner Box: 29*21*17cm; Carton Size (8 pcs): 60*44*36(cm)

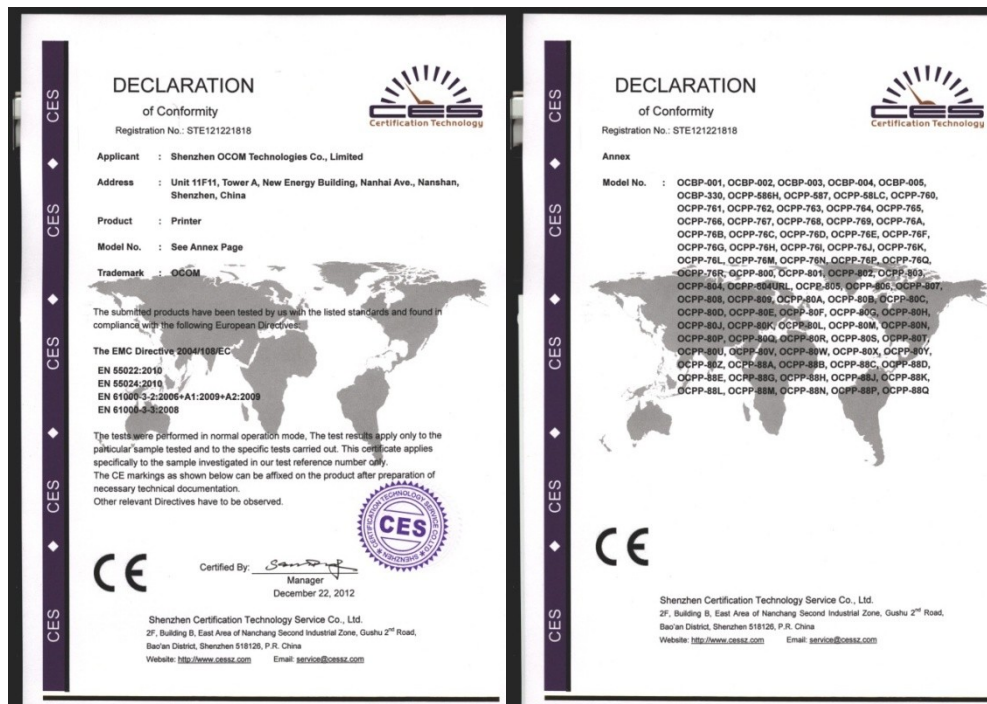
### 1. Interface:



### 2. Power adaptor for option:



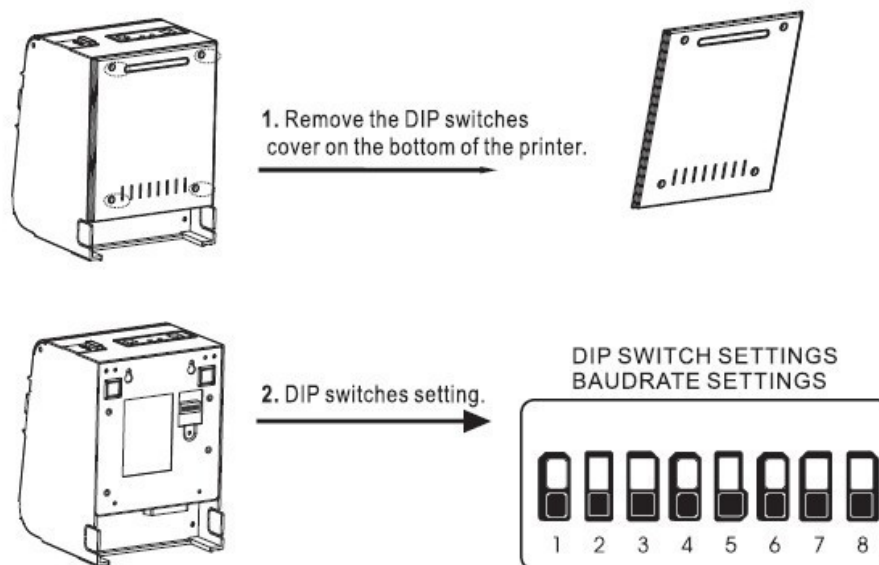
### 3. Certification:





## 6. Setting the Printing Mode(DIP switches):

The DIP switches are used to set the printer to perform various functions, such as cutter mode, character set, speed, beeper, print density and etc.



## 7. Functions of buttons and indicators:

### (1) ALARM Indicator

When the printer is out of paper, the cutter error occurs or printer head overheats, the ALARM indicator flashes.

### (2) FEED button:

Press to feed paper manually.

### (3) Paper indicator:

When this indicator lights, the printer is out of paper,  
When this indicator dims, the printer is with paper.

### (4) Power indicator:

When this indicator lights, the printer is turned on,  
When this indicator dims, the printer is turned off.

### (5) Power button:

Press to turn on/off the printer

## **8. General problem:**

### **(1) Will the serial port printer print in mass?**

Printing in mass will happen if baud rate of PC host is different from printer's.

### **(2) Why is the red light flashing with paper installed properly?**

Print head is too hot or printer hasn't detect the black mark; Or the print head and cutter haven't connected correctly.

### **(3) Why can't the printer open cash drawer? Or cash drawer open automatically?**

Please check if the cash drawer is connected with printer properly. If connected properly, please send service department to fix it. If cash drawer open automatically, maybe it is burnt, please send service department to fix it.

### **(4) Why doesn't printer test the paper?**

Please clean the printer sensor with soft brush if the sensor is dusty. If it doesn't work after cleaning, Please send to service department for fixing.

### **(5) Why printing in disorder after using the printer for some time.**

The printer interface is damaged, please change communication interface board or send maintenance department to fix it.

### **(6) Why the indicators can't be lighting?**

Please check if power line is inserted correctly to printer, adapter and socket, and check if printer is power on. If above all correct, please send maintenance department to fix it.

### **(7) What are the additive functions of series?**

Compared with GP-80 series have following additive functions: download NV image, macro-definition print, page mode print, compatible with EPSON TM-T88III roundly.

### **(8) Why does the thermal printer print unclearly?**

Please confirm if the whole print area or part of it is unclearly, if the whole print area is unclearly, maybe the print paper can't get up to the quality standard, if part of print area is unclearly, maybe the print head is dusty, please clean the surface of thermal head gently with alcohol cotton, if can't print clearly, please send maintenance department to fix it.



**(9) What languages does series support?**

80MM series printers support simplify, traditional, Korean, Japanese and 21 sorts of international language.

**(10) How to install printer in network neighborhood ShareDocs?**

Come into network neighborhood, find the printer in sharing, double click the printer to install the driver.

**(11) Why auto-cutter only cut in half?**

The cutter splice is distorted or short of bounce, you can change a new cutter or increase cutter bounce to resolve the problem.

**(12) Ethernet or print in multi-link, but sometimes can't print out, how to resolve it?**

Firstly check internet connection is always on or not, then make Self-test on each printer, to check if Some Ethernet ID is repeated, if with such problem, please use Ethernet IP program to change Ethernet ID To make each printer have their own ID Number

**(13) Why is the thermal printer cutter locked?**

At this time please don't prize by rigidity object, firstly please press top cover or pat it slightly, to check if cutter can return back. If not please open the front cover of cutter, adjust the gear by hand to make the cutter cover open front cover automatically.

**(14) How to manage if some water leak into printer?**

Key: Please power off immediately, use a electric drier to make PCB, mechanism dry fast.

Note: temperature can not beyond 50

**(15) How to get into drive mode? What additional functions with series?**

Set DIP switch, "SW-8" ON with the high-speed driver mode, the graphics printing speed of series increases from 27mm/s to 100mm/s, and the series from 180mm/s to 260mm/s. In the mean time, printers have low work noise. For series, there are many new features, such as paper-end reprinting function, ethernet printer status monitor, ethernet multi-link, EPSON OPOS ADK V1.95 supports, thai characters printing, and optional parity bit (None, Odd, Even, Space and Mark) for serial port.

**(16) How to get beeper in Kitchen print:**

Set DIP switch, "SW-6" ON, If connect one speaker to printer cash drawer port, when cut paper finished, speaker will be beeping for 5 seconds, to notice there is one print finished.

(NOTE: when printer cash drawer port is connected with cash drawer, please do not set DIP switch, "SW-6" ON, otherwise cash drawer will be burnt.)

**(17) How to get high speed print with Serial port 115200bps**

On serial printer, set DIP switch, "S" W-8 ON, to get 115200bps high speed print mode.

**(18) How to re-print document which was unfinished for paper end.**

Now install a new paper roll, unfinished printing will be repeated to get it complete finished.

**(19) Does it support software embedded in printer?**

Yes, printer is embedded with software; defend software property, with this function, printer can't be working properly if software or printer changed.

**(20) Does it support multi-link with Ethernet port?**

Key: Yes, when one printer is online printing, another printer can be connected and holding online, waiting for printing command.

### **Cutter jam maintenance**

Power off the printer to reboot the printer to return the cutter to re-initialize.

Turn the printer on the gear cutter, the cutter can be returned to its original position, replace the flip-open after normal printing paper.

Note: You can not forcibly pry open the flip, so as not to damage the print head and auto cutter.

### **Driver**

The thermal series printer have two way for drive, one is install the drive directly under the WIN9X/2K/IT/XP; another is use parallel or serial directly

#### **(1) Install the drive under the WINDOWS**

Add the printer under the windows, and appointed drive document to windows, you can print with transfer print command in the program. Under this way, It is actually transfer the character to dot matrix to print

#### **(2) Serial/Parallel drive directly**

In this way, don't use the drive program, just need to direct character output to the port. and achieve transforming by printer internal hard character; the drive way is use port directly. The print mode is change from page print to row print, so that print control is more convenience If you use direct drive port, you need to use the print command collect to control the printing, and 80mm series printer has been integrated within the ESC / POS command set.

### **Clearance**

**When the printer occurs one of the followings, clean the printer head.**

- (1) the printer is not clear
- (2) vertical page in a column is not clear
- (3) Feed noise

#### **The printer head cleaning steps:**

- (1) Turn off the printer and unplug the power cord. open the upper cover, if have a paper, please clean out
- (2) Until the printer head cooling you can cleaning
- (3) Wipe the damp cloth with alcohol (without water) cleaning the printer head surface if have dust, spot
- (4) Waiting the alcohol completely volatilize, please close the upper cover, try again to print

#### **Notice :**

- (1) You must make sure the power cord is close when you maintenance the printer
- (2) Don't touch the printer head surface with your finger or metal goods, don't use the forceps etc tools avoid to scratch the printer head, print roller sensor surface
- (3) Don't use oil, acetone Ect organic impregnant
- (4) Waiting the alcohol completely volatilize, open the power again and continue print turn off the power, cover the top, if there is paper, remove it

## **9. Printer driver:**

The thermal series printer have two way for drive, one is install the drive directly under the WIN9X/2K/NT/XP; another is use parallel or serial directly.

#### **(1) Install the drive under the WINDOWS**

Add the printer under this windows, and appointed drive document to windows, you can print with transfer print command in the program. Under this way, it is actually transfer the character to dot matrix to print.

#### **(2) Serial/Parallel drive directly**

In this way, don't use the drive program, just need to direct character output to the port, and achieve transforming by printer internal hard character; the drive way is use port directly. The print mode is change from page print to row print, so that print control is more convenience. If you use direct drive port, you need to use the print command collect to control the printing, and 80mm series printer has been integrated with the ESC/POS command set.

## **10. Printer cleaning:**

**You need to clean the printer if have below issue:**

- (1) The printer is not clear
- (2) Vertical page in a column is not clear
- (3) Feed noise

### The printing head cleaning step:

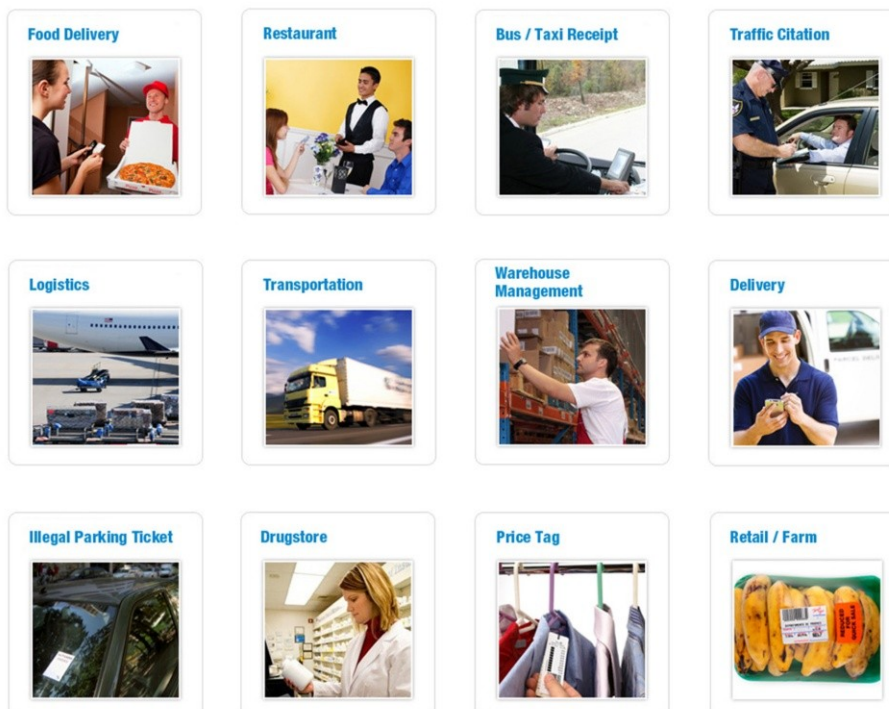
- (1) Turn off the printer and unplug the power cord, open the upper cover, if have a paper, please clean out.
- (2) Until the printer head cooling you can clean.
- (3) Wipe the damp cloth with alcohol (without water) cleaning the printer head surface is having dust, spot.
- (4) Waiting the alcohol completely volatilize, please close the upper cover, and try again to print.

### Notice:

- (1) You must make sure the power cord is close when you maintenance the printer.
- (2) Don't touch the printer head surface with your finger or metal goods, don't use the forceps etc tools avoid to scratch the printer head, print roller sensor surface.
- (3) Don't use the oil, acetone Ect organic impregnant.
- (4) Waiting the alcohol completely volatilize, open the power again and continue print. Turn off the power, cover the top, if there is paper, remove it.

## 11. Application Area:

The receipt printer can work on a lot of locations, such as the TAXI bill printing, administrative fees receipt printing, post receipt printing, restaurant ordering information printing, online payment information printing, etc, this printer will be more widely used in the near future.



## 12. Shipping:

1. Air, Sea, Express(DHL, FedEx, UPS, EMS, TNT and so on)
2. EXPRESS: around 3-7 working days to arrive
3. INTERNATIONAL AIR MAIL: usually around 2-4 days to arrive, will also depend on which destination port
4. By sea: depend on which destination port

## 13. Payment:

1. T/T in advance



2. Western Union
3. Escrow
4. ...

## 14. Services:

### Warranty:

12 months of shipment normally. Some designated models can have as long as 24 months warranty.

### RMA Procedure:

If you suspect your product is not functioning properly, please contact us to help determine whether your product is defective within warranty. Once determined defective you will receive an RMA authorization number for repair or replacement. Customers will return the defective product to us. Upon receipt of defective products, warranty verification will include visual inspection and testing for normal wear and tear, alteration, and functional compliance of the OCOM product. Defective products will be repaired or replaced and shipped via express within 30 days or best effort. Customers will not be charged for warranty repairs. However, if a returned product does not meet warranty verification then testing, repair, and/or shipping fees may apply.

### Dead-on-Arrival (DOA):

Any product found to be defective within 30 days of shipment shall be deemed Dead on Arrival (DOA). DOA products will be advance replaced and shipped via express.

## 15. About US:

**OCOM Technologies Limited** is a professional supplier specialized in POS and Auto-ID applications. Our products portfolio covers Barcode Scanner, Barcode Printer, Thermal Printer, Dot Matrix Printer, Magnetic Card Reader, Data Collector, POS Terminal, and other IOT products. We have FCC, CE, RoHS, and other certifications. We have sell our products to West Europe, North American, Africa, Asia-Pacific and other countries.



OCOM's headquarters registered in Hong Kong in June 2007, we have factories in pearl river delta of China, the heart of the global electronic industry. Our Shenzhen branch has independent Importing-Exporting Authorization. Based on our fast professional service, reliable quality, competitive price, and flexible cooperation modes, we would like establish stable and reliable partnerships with customers all over the world. OEM/ODM is welcome.

---

You can find more information of us at: [www.ocominc.com](http://www.ocominc.com),

Together we quest for the best.