

China factory rugged handheld POS Terminal with EMV with 58mm thermal printer

(M/N:POS-T1)

Feature:

- | Android 5.1 operating system
- | 5.0 inch screen touch
- | Long standby battery capacity is 3600 mAh
- | 58mm thermal printer
- | 5 million pixels camera
- | 2G /3G/4G wifi, bluetooth communication,
- | Integrated magnetic card reader, induction IC card reader and contact IC card reader
- | Passed the EMV L1 L2 and PBOC bank payment certification
- | The cradle can be used for communication, charging, power bank, and providing wireless network (Optional)

Application :

apply chain supermarkets, restaurants, convenience stores, clothing store, premises, bakery, cashier, pay, enters, sells, saves the business management function.

Technical Specification:

Basic Information

Operating system	Android 5.1
RAM	RAM:1GB
Extended stored	FLASH:8GB
Display screen	5.0 inch
Touch screen	Capacitive touch screen, support the electronic signature
Battery	Lithium battery 3600 mah, 3.7 V
Bluetooth	Bluetooth 4.0
Camera	5 mega-pixel camera
Positioning function	GPS AGPS WLAN for Positioning
Printer	58mm thermal printer 30mm diameter Paper roll
Interface	Micro USB

POS Function

Magnetic card reader	Full track magnetic card reader Support ISO1788/7812, AAMVA protocol
IC card read-write	Support ISO7816 protocol
Non-contact card reader	Support ISO/IEC 14443 Type A&B, Mifare, felica card, in line with the EMV/PBOC PAYPASS specification
PSAM Card Certification	Bank security payment chip card Unionpay card acceptance terminal network detection EMV/PBOC3.0 L1 and L2 certification EMV/qPBOC3.0 L1 and L2 certification Unionpay intelligent safety standards point-of-sale terminals

Network Parameters

Network Type	GSM, WCDMA, TD-SCDMA, FDD-LTE, TDD-LTE
--------------	--

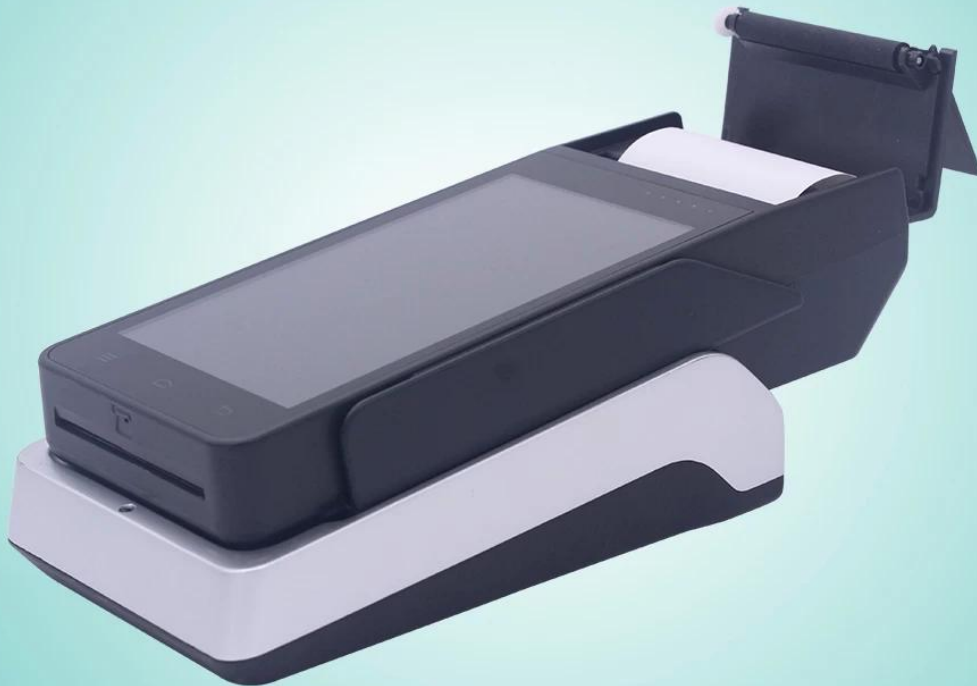
Network Spectrum	GSM850/900/1800/1900 WCDMA2100/1900/900/850 TD-SCDMA B34/B39 FDD-LTE B1/B2/B3/B4/B5/B7/B8/B20 TDD-LTE B38/B39/B40/B41
WLAN	IEEE802.11.b/n/g

Physical Parameters

Size	191mm×80mm×46mm
Weight	650g
Operating Temp	-20°C ~ 60°C
Storage Temp	-40°C ~ 80°C
Humidity	10%~90% RH non-condensing



POS-T1



www.ocominc.com



