

# User Manual For The D008 Series



## Copyright Statement

Information contained in this document provides solely the description of the current status of the product but not an intended guarantee, including but limited to any implied warranties of merchantability and fitness for a particular purpose. Shenzhen OCOM technology Co., Ltd (hereinafter referred to as the Company) reserves the right to change the features, specifications, warranty information and document contents of related products at any time without prior notice.

Control programs of this product are also protected by the Copyright Law of the People's Republic of China, with all rights reserved.

Microsoft、Windows、Windows 2000、Windows XP、Windows CE、Windows 2003、Windows Vista、Windows 2008、Windows 7、ActiveSync、Windows Mobile Device Center, and Internet Explorer are registered trademarks of Microsoft Corporation in the United States or other countries.

All the other brand names and product names mentioned in this document are legal trademark names, service marks or registered trademarks of the corresponding companies.

Before Using this product, read this manual carefully please.

**CHAPTER 1 PACKING CONFIRMATION ..... 4**

**CHAPTER 2 INTRODUCTION..... 5**

**CHAPTER 3 USING THE DEVICE..... 17**

**CHAPTER 4 ADVANCED SETTINGS..... 35**

**CHAPTER 5 AFTER SALES SERVICE.....51**

## Chapter 1 Packing Confirmation

### ***Checking articles contained in the package***

Before using the product, pls check whether the package contains the following articles:



Cradle

Touch pen  
and Wrist  
strap

HT5000 device

Power  
adapter  
and Usb  
cable

battery

## Chapter 2 Introduction

### ***HT5000 Introduction***

The HT5000 product is an industry-level handheld terminal developed, designed, and produced based on features of different industries by Lanchang technology Co., Ltd. The HT5000 series adopt ergonomic design and is compact and flexible, shock-proof, and drop-proof. The HT5000 series can work in the standby mode for a long time. In addition, the HT5000 series adopt the dual power supply mode and support the conversation function.

#### **Main Functions and Features**

1. Compact, portable, and durable.
2. Long working time: The product can work for more than eight hours consecutively.
3. Easy charging: The product uses a USB interface for charging without a specialized USB cable.
4. Dual power supply mode: when the master battery is used up and the slave battery is fully charged, the product can work in the standby mode for six hours to prevent data loss caused by unexpected power failure.
5. Extensible hardware module
  - a A camera with 3 million pixels
  - b GPS positioning
  - c High frequency/Ultrahigh frequency RFID read/write.
6. Built-in one-dimension scanning module.

7.Communication mode:The product supports Wi-Fi communication,GPRS/GSM communication,and Bluetooth communication.

8.Open design:The product provides a software interface that can be used to develop application functions.

9.The product is an industry-level device that is drop-proof,dustproof and high/low temperature resistant.

10.High-speed and high-capacity data processing:The product provides a 533 MHZ CPU processing speed,256MB built in storage,and 128MB memory and supports the Micro SD/TF card with a maximum capacity of 16GB.

11.The product provides a 3.5in color touch screen.

12.The product supports Chinese handwriting input.

## **Applicable Industries**

- 1, Apparel industry
- 2, Fast moving consumer goods(FMCG),retail and supply chain industries.
- 3, Logistics industry (including warehousing,express delivery and ltl material transport)
- 4, Hospital government,mobile office, and asset inventory.

## **Detailed Parameters:**

Model		HT5000
CPU		SUMSANG S3C2451 (533/400 MHZ)

Operating System		Microsoft Windows CE 5.0 OS(Multi-lingual)
Memory	RAM	128MB
	F-ROM	128MB/256MB /512MB(Standard configuration 256MB)
	Extension	Micro SD/TF slot (a maximum of 16G)
Scanning parameters	Scanning engine type	One-dimension laser scanner
	Scanning speed	100±20 per second (bidirectional)
	Scanning distance	60-650mm
	Scanning angle	54±5 degree
	Resolution	0.127-1.00mm
	Readable barcodes	UPC-A; UPC-E; UPC-E1; EAN-8; EAN-13; Bookland EAN; Code 128; UCC/EAN-128; Code 39; Trioptic Code 39; Code 39 Full ASCII; Code 93; Code 11; Interleaved 2 of 5; Discrete 2 of 5; Codabar; MSI; GS1 DataBar 14; GS1 DataBar Limited; GS1 DataBar Expanded;
Screen		3.5'TFT-LCD QVGA(240*320)color touch screen

Input	Soft keyboard	English,Pinyin,and Chinese handwriting
	Hard keyboard	27+2 key alphanumeric keyboard
	Scanning start key	The central key
Communication	WI-FI WLAN(standard configuration)	The product supports communication on the 802.11b/g Wifi WLAN with a rate of 54MB/s, which meets the requirements of the CISCO CCX2,3 security standards and supports CISCO AP and security regulations.
	Bluetooth(standard configuration)	Bluetooth V2.1+EDR
	Wide-area wireless network (extension)	The product provides a GSM/GPRS wireless communication module and supports GSM/GPRS Class10and GSM07.10 multiplexing
Communication	Camera(extension)	Camera with 3million pixels and fill light
	GPS(extension)	48 channels;positioning accuracy: less than 2.5m;speed accuracy:less than 0.01m/s
	RFID(extension)	High frequency/ultrahigh frequency RFID read/write
Power	Master battery	3.7V 2800MAH rechargeable lithium battery



(Dual-Power Mode)	Working hours	8 or above (depending on the actual environment)
	Charging time	3.5 hours
	Slave battery	120MAH,providing power for six hours
Ingress protection		IP54
Dimensions	Ergonomic design	155mm(L)×76(W)×29(T)
Weight		320g(with battery)
Working Environment	Operating temperature	-15~+50℃
	Storage temperature	-20~+60℃
	Operating humidity	Relative humidity:5-95%(no condensation)
	Storage humidity	Relative humidity:5-95%(no condensation)
	Endurable height for dropping	Can endure multiple drops to a smooth concrete floor from a height of 4 inches(1.2M)

## Function Introduction:Front View and side View



### **a. Charging and system indicator:**

The indicator is displayed in red during charging and green when the charging is complete and the system runs properly. The indicator blinks in green when the power is

insufficient.

**b. Scanning indicator**

The indicator is displayed in red when a barcode is scanned successfully.

**c.Touch screen:**

The touch screen enables you to perform operations by using a stylus.

**d. Power button**

The power button can be used to power on/off the device or switch the device into sleep or wake-up mode.

**e.The connector with cradle:**

Connecting with cradle , and Through cradle,using the usb data line to transmit and receive data or a power adapter to charge the device

**f. Reset hole:**

You can use a touch pen to click the reset hole to reset the device.

## Master keyboard introduction





**a. Barcode scanning key:** You can scan barcodes by pressing this key.

**b. Power button:** Power on/off the device or switch the device into sleep or wake-up mode.

**c. ESC key:** You can press the ESC key to perform operations such as cancel and exit.

**d. Enter key:** You can press the Enter key for confirmation or to switch to next line.

**e. Backspace key:** You can press this key to delete the previous character.

**f. S1 key:** It represents the left softkey and is equivalent to the F11 key on a computer keyboard.

**g. S2 key:** It represents the right softkey and is equivalent to the F12 key on a computer keyboard. .

**i. Left/right scanning key:** You also can scan barcodes by pressing the left or right key.

**h. Function key:** You can use a key combination by pressing FN key releasing it and then pressing another key.

The key combinations are as follows:

[Func] + [.]	Open the backlight of keyboard
[Func] + [<=]	Battery status
[Func] + [space]	Input numbers or letters based on the current input mode.
[Func] + [0]	F10
[Func] + [1]	F1
[Func] + [2]	F2
[Func] + [3]	F3

<b>[Func] + [4]</b>	F4
<b>[Func] + [5]</b>	F5
<b>[Func] + [6]</b>	F6
<b>[Func] + [7]</b>	F7
<b>[Func] + [8]</b>	F8
<b>[Func] + [9]</b>	F9

## Function Introduction: back View



**a. Windows for scanning barcodes:** Laser comes out from this window. do not look into the window with naked eyes.

**b. Camera:** A camera and fill light are installed here.

**c. Speaker:** Playing the voice from speaker.

**d. Master battery cover buckles :** The master battery cover buckles are used to fix the battery cover.

**e. TF card slot:** A micro SD/TF memory card can be inserted in the TF card slot.

**f. SIM card slot:** An SIM card provided by carriers can be inserted



in the SIM card slot.

**g. Battery cover detection switch:** The switch is used to check whether the battery cover is closed properly to ensure normal running of the device.

## Chapter 3 Using the device

### Installing the SIM card,Memory card and battery

1. Open the battery cover,Insert the SIM card or Micro SD/TF card
2. And Install the battery properly,Close the battery cover.

**Note:** Only 50% electricity remains in the battery when you use the battery for the first time.you can charge the battery by using the power adapter or a seat charger(purchased separately).The first charging must be more than 12 hours.

### Powering on/off the device

The HT5000 product is powered off when you obtain it for the first time.After you press and hold down the power button,the indicator is turned on and the Windows CE screen is displayed.Then you can release the button to power on the device.

When the device is not used,you can switch the device into sleep mode or power off the device to save electricity.

1. If you shortly press the power button when the device is in powered-on mode,the device is switched to sleep mode.

When the device works in sleep mode, power is provided to certain components and data in the memory is retained. You can press the power button again to switch back to wake-up mode.

2. If you press and hold down the power button for more than three seconds when the device is powered-on, the following dialog box is displayed:



Select **Yes** to power off the device.

## Changing Date and Time

Click **Date/Time** on the control panel or double-click the time zone on the taskbar to display the **Date/Time Properties** dialog box.



Double-click the time zone on the taskbar to display the Date/Time Properties dialog box.



Click the Time Zone drop-down list to choose the required time zone. Click Apply on the lower right corner of the dialog box to save the configuration.



Click the number indicating the year to enter a year directly or change the year by clicking the up and down arrows



Click the characters indicating a month to change it in the displayed menu or click the up and down arrows to change the month.



Click the mapping number in the data area to change the date



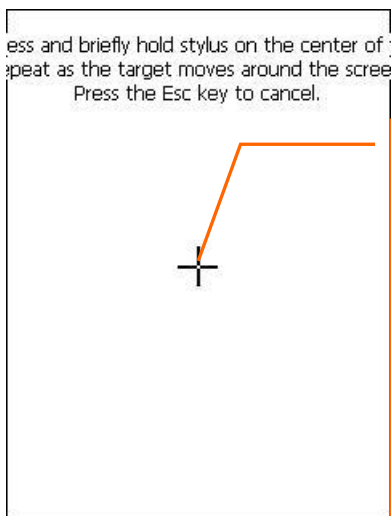
After the configuration is complete, click OK on the upper right corner of the dialog box to save the configuration.

## Calibrating the screen

After a period, the clicking point of the stylus may shift and you must re-calibrate the screen.

Click the stylus icon in the control panel to display the Stylus Properties Re-calibrate. The calibration screen is displayed.





Use the stylus to click the cross center on the screen. After each click, the cross is displayed in another position. After you click the cross center correctly for a consecutive five times, the cross disappears. At this point, you can press the Enter key to save the calibration.

## Using the stylus

Clicking objects on the device screen is the basic operation and is similar to using the mouse to click objects on a computer screen.

When the device is powered on, you can use the stylus to perform multiple operations, such as starting an application, choosing a menu, or selecting items in a dialog box.

You can double-click an icon on the screen to start an application. Just like you drag the mouse to select text or move objects on a computer, you can drag the stylus to select text or use the stylus to drag the scroll bar. For many applications, after you press and hold down an object for about two seconds by using the stylus, a context menu is displayed.



**Note:** You must use the dedicated stylus to perform operations on the screen. Do not use a ball pen, pencil or other sharp articles.

## Entering text

You can enter text in the following ways:

- Entering text by using the soft keyboard on the screen
- Entering text by using the hard keyboard of the device

### Entering text by using the soft keyboard

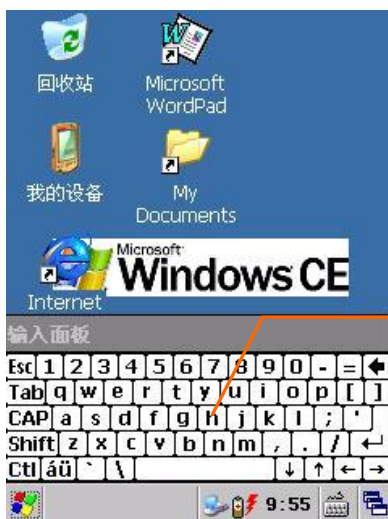
A soft keyboard is displayed in the lower area of the screen. You can use different soft keyboards to adopt corresponding input methods to enter letters, numbers or symbols.



Use the stylus to click the keyboard icon on the taskbar



The list of available soft keyboards is displayed on the screen. You can choose the required soft keyboard from the list. Click Keyboard to display the keyboard input panel.



Use the stylus to click the soft keyboard to enter letters, numbers or symbols



Choose **Hide Input Panel** to hide the current soft keyboard.

## Managing Device Functions

Certain functions of the HT5000 product are turned off when you use it for the first time. You can start the required functions by using the device function manager ModuleMgr.

You can start the device function manager by double-clicking the ModuleMgr icon on the desktop or control panel.



Click **Enable** or **Disable** to enable or disable the related functions.

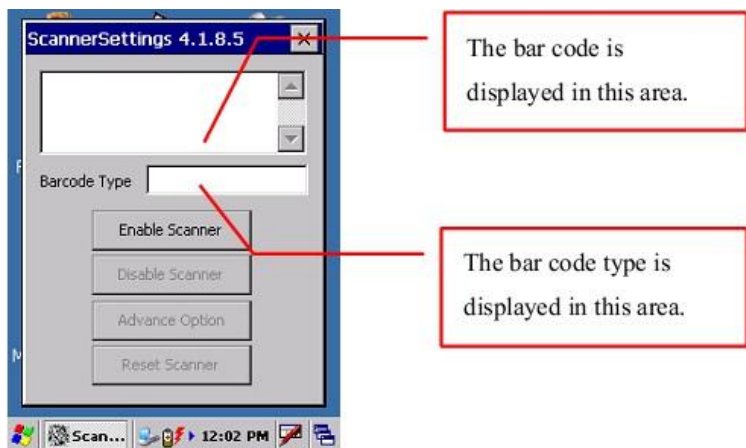
When you enable/disable a certain function, the system retains the configuration and enables/disables the function automatically after next power-on.

## Scanning Barcodes

You can use the ModuleMgr or Scannersetting program to start the scanner, and then press the orange barcode scanning key on the master keyboard or the left/right key to scan barcodes.

You can start the ScannerSetting program by double-clicking the Scannersetting icon on the desktop or control panel.





## Connecting to a PC

You can connect the device to a PC by using a data line if Microsoft ActiveSync 4.5 (Window 2000/XP/2003) or Windows Mobile Device center 6.1 (Windows Vista/2008/7) is installed on the PC. You can download Microsoft ActiveSync 4.5 (Window 2000/XP/2003) or Windows Mobile Device center 6.1 (Windows Vista/2008/7) from [www.Microsoft.com](http://www.Microsoft.com).

## Restarting the Device

You may need to restart the device to recover normal running occasionally (when more applications are running than in normal cases or when certain software runs abnormally). The device can be restarted in the following two modes.

### 1. Warm boot

If you restart the device in warm boot mode, ongoing items are stopped before the device restarts. Records and data in the

memory are retained.Execution method:Use the stylus to click the reset hole and release it immediately.

## **2. Cold boot**

If you restart the device in cold boot mode,the power is cut off forcibly.Ongoing items are terminated and the device restarts.Data in the memory is deleted.

Execution method: Press and hold down FN KEY,use the stylus to click the reset hole,and then release FN and the reset hole simultaneously.

## **Restoring Default Settings**

In some cases,you may need to delete certain settings.You can delete data in the memory and registry by restoring the default settings.

You can restore the default settings by double-clicking the RestoreFactorydefault icon and enter 1234.After the operation is successful,the device automatically restarts.

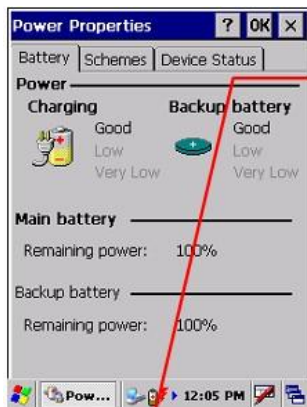





Double-click the  
**RestoreFactoryDefault** icon.

## Checking the Remaining electricity

You can click the power icon on the control panel to display the Power Properties dialog box.



When the electricity is insufficient, the system displays a warning icon on the taskbar. You can display the **Power Properties** dialog box by clicking the warning icon.

When the electricity is to be used up, the warning icon changes to .

## Precautions for Using the battery

Certain files and information may be stored in the memory. If the battery runs out, these files and information are lost. Therefore, providing power to the device constantly is very important.

In general cases, the device can work for more than eight hours after it is fully charged. When the electricity is reduced to a certain level, the system indicator blinks and a warning indicating electricity insufficiency is displayed. If you continue to use the device, the device switches to sleep mode or is turned off automatically.

To extend the battery life, you must follow the following **advices**:

1. Minimize the battery charge and discharge times and charge the battery only when the system displays the electricity insufficiency warning.
2. Prevent over discharge in daily use and charge the battery immediately when the system displays the electricity insufficiency warning. Over discharge shortens the battery life.
3. Prevent overcharging in daily use and stop charging when the battery electricity exceeds 95%. You must calculate the charging time correctly when a seat charger is used. Do not charge a fully-charged battery because over charging shortens the battery life.
4. Charge and discharge the battery completely when you use the battery for the first time and every three months.
5. If the battery is not used for a long time, you must remove the battery from the device and retain 50% of electricity in the battery.

## Chapter 4 Advanced Settings

### Setting the Power button function

You can click **Powerbutton** icon on the control panel to set the power button function



Enable: You can press and hold down the power button to turn off the device.

Disable: No function is provided when you press and hold down the power button.

Enable: You can shortly press the power button during power-on to switch the device to sleep mode.

Disable: No function is provided when you shortly press the power button.

### Setting the GPRS Network

Before using the GPRS, you must ensure that the GSM function is enabled.

You can start the GSM function by using the device function manager **ModuleMgr**.

You can create the GPRS connection in the following two ways:

### 1. Creating the connection manually.

Double-click the Network and Dial-up connection icon on the control panel to enable the network and the dial-up connection manager.





Click **New Connections** connection.

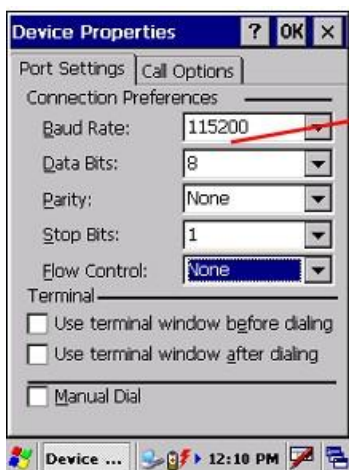


Enter the connection name, such as **GPRS**.

Select **Dial-up connection** and click **Next**.

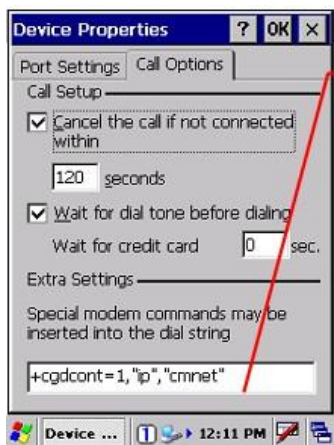


Choose **COM2:** or  
**COM3:** and then  
click **Configure**.



On the **Port Settings** tab  
page, set **Bits per second**  
to **115200**.





On the **Call Options** tab page, enter the following command to initialize the modem:  
`+CGDCONT=1,"IP","cmnet"`  
**Cmnet** specifies the point to connect to the GPRS network of China Mobile.  
Click **OK** to switch back to the **Modem** dialog box.



Click **Next**.



In the **Phone Number** area, enter the dial-up number such as **\*99\*\*\*1#**.

You must query the mobile carrier to obtain this number. Click **Finish**.

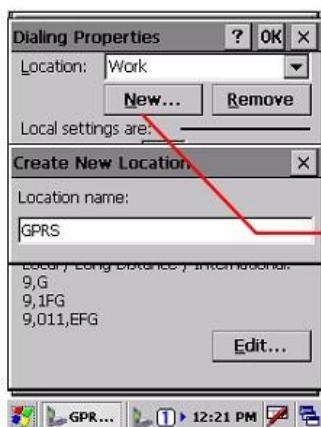


Double-click the created GPRS connection to display the Dial-up Connection dialog box.



Click **Dialing Properties** to set the dialing location.





Click **Create** to enter the new location name such as **GPRS**.



Click **Edit** to change the dialing mode.



Change the texts in the three text boxes to **G** and then click **OK** to save the settings and exit.



Click **OK** to save the settings and exit.

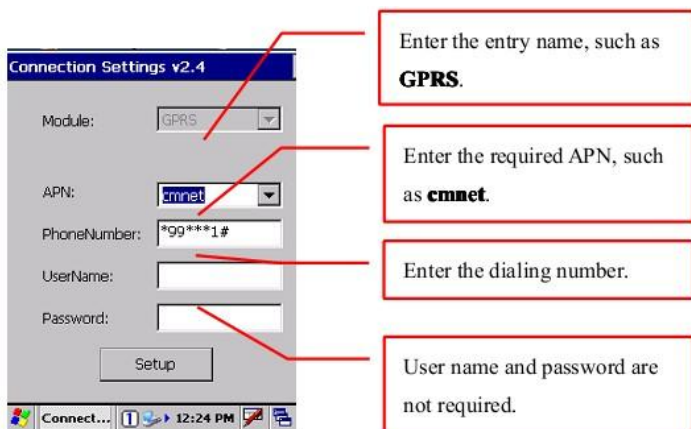
At the point, the GPRS connection is created successfully.

## 2. Creating the connection automatically.

To simplify the setting of GPRS connection, the device provides the

GPRS setting tool to set the connection quickly.

Choose **My Device>windows** and click the **GPRS setting icon** to enable the GPRS setting tool.



The screenshot shows the 'Connection Settings v2.4' window. It has a title bar with the text 'Connection Settings v2.4'. Below the title bar, there are five input fields: 'Module:' with a dropdown menu showing 'GPRS', 'APN:' with a dropdown menu showing 'cmnet', 'PhoneNumber:' with a text box containing '\*99\*\*\*1#', 'UserName:' with an empty text box, and 'Password:' with an empty text box. Below these fields is a 'Setup' button. At the bottom of the window is a taskbar with icons for 'Connect...', a help icon, a clock showing '12:24 PM', and a printer icon. Four red lines point from text boxes on the right to the input fields: the first line points to the 'Module:' dropdown, the second to the 'APN:' dropdown, the third to the 'PhoneNumber:' text box, and the fourth to the 'UserName:' and 'Password:' text boxes.

Enter the entry name, such as **GPRS**.

Enter the required APN, such as **cmnet**.

Enter the dialing number.

User name and password are not required.

## Setting the WI-FI Network

Before using the WIFI, you must ensure that the wifi function is enabled.

You can start the wifi function by using the device function manager **ModuleMgr**.

You can query the network administrator for the wireless network information, such as SSID, encryption type, authentication

mode, and cipher key.

Click the network icon on the taskbar to display the interface for setting the wifi and set the wifi as follows:



Click the network icon to display the interface for setting the Wi-Fi function.



On the **Wireless Information** tab page, available networks are displayed. You can view the SSIDs of APs for which the broadcast function is enabled.

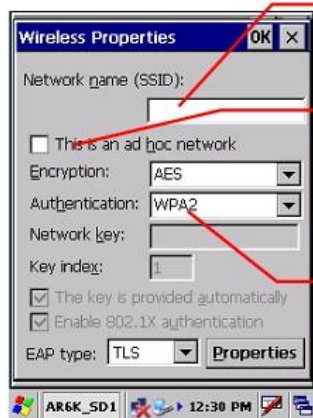
Double-click the SSID to be connected.

If the broadcast function is not enabled for the AP to be connected, double-click the Add New Network icon.

When you add an available network, the system automatically detects the encryption type and authentication mode of the added network.



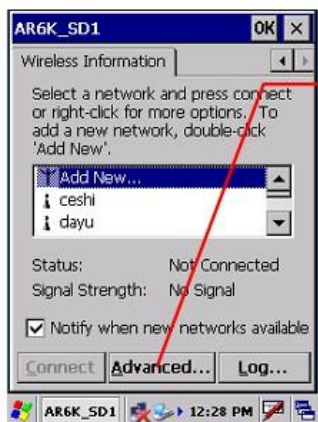
When you add a new network, you must specify the network information.



Enter the network name.

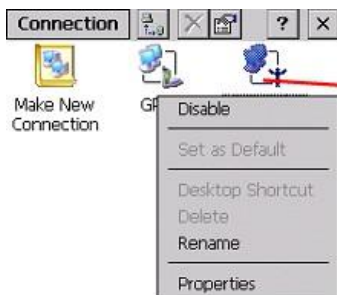
Select this check box to directly connect to another device or PC.

The encryption type varies with the authentication mode. Select the correct authentication mode first.

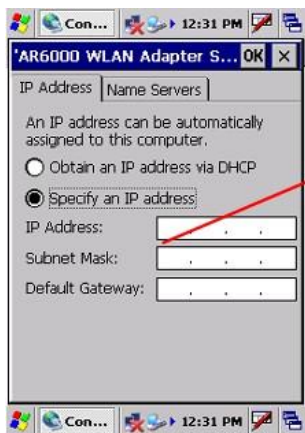


Click **Advanced** to display the interface for advanced settings.

If a static IP address is required for the network, choose Control Panel > Network and Dial-up connection to set the network adapter properties.



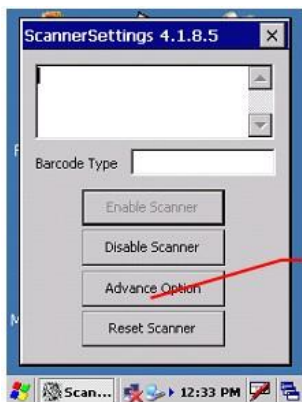
This icon is displayed only when the Wi-Fi function is enabled.  
Use the stylus to click and hold down the icon and choose **Properties** in the displayed context menu.



Enter the IP address,  
subnet mask, and default  
gateway.

## Setting the Options for barcodes Scanning

You can modify the advanced settings of the scanner by using the ScannerSetting program.

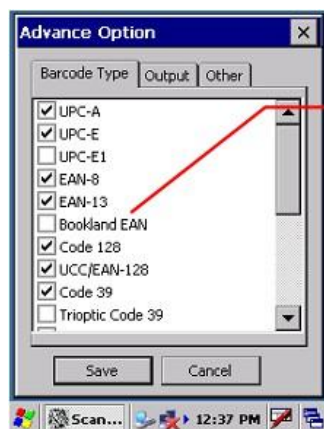


Click **Advanced Options**  
to display the interface for  
advanced setting.

To enhance the decoding speed, the decoding function is disabled



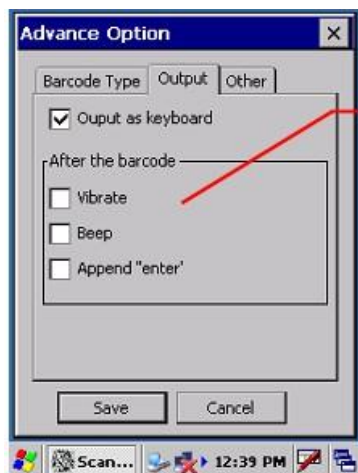
for certain types of barcodes by default. You can enable the decoding function manually.



In the **Barcode Type** list box, choose bar code types for which the decoding function is enabled.

You can set the scanner to a standard input device.

At this point, the scanned barcodes are converted into keyboard messages. You can scan barcodes by using programs not supporting barcode scanning, including the wordpad and remote desktop programs.



On the **Output** tab page, you can select the displayed options to send messages after bar code scanning, such as Enter event, Beep, and vibration.

You can click Reset Scanner to restore the default settings.



## Chapter 5 After-Sales Service

### Support and service

Website: You can connect your PC to the Internet and visit [www.ocominc.com](http://www.ocominc.com) to obtain the product specifications, optional equipment, and related information.

Customer support: If you have questions about this manual or you cannot solve any problem through the website, pls contact our customer service staff. If your device needs repair, pls contact us before delivering the device in order to obtain service information, delivery instructions, and maintenance costs(maintenance irrelevant to the warranty).

Service: If you require diagnostic services or other service information, pls contact our customer service staff. Donot deliver your device before contacting the company. If your device meets the warranty conditions for repair, pls prepare your purchase date certificate and warranty card.

Before contacting the company, you must:

1. Read this manual.
2. Prepare the device information, including:  
Model, S/N, Purchase certificate, Warranty card.
3. Get your device ready. Our customer service staff may ask you to operate the device.
4. Prepare your questions. Detailed problem description can help the customer service staff to solve your problem quickly.

### Warranty Period

A customer will enjoy a warranty of 12 months for the handheld terminal (subject to the sales contract) and a warranty of 3 months for accessories from the date of purchase. If no purchase certificate can be presented, the customer will enjoy a warranty of 12 months for the handheld terminal since the date of production. (The accessories include data line, connector adapter, stylus, battery, power adapter, and handheld elastic strap.)

Based on normal operating conditions, If you find quality defect within seven days from the purchase date, you can cancel the order or exchange for another product of the same model.

The company provides guarantee for the defect-free materials and manufacturing of the hardware product for 12 months from the purchase date on the original receipt of the first buyer.

If the company receives a notification on the defined product defects during the warranty period, the company may decide to repair or replace the proved defective product.

If the Company cannot repair or replace the product within a reasonable period, the customer can choose a refund when returning the product.

## Warranty scope

The warranty does not cover defects caused by the following factors:

Misuse, unauthorized modification, dismantling the product without permission, installing ,operating, using or storing the product without strictly following the environment specifications described in this manual, damage caused during delivery, improper

maintenance, using software ,components, media, supplies, and consumables not provided by the company or using the product in a non-designated project, natural wear, damaged product label, and irresistible damages caused by natural disasters. This warranty applies to mandatory specifications of related national laws.

#### Warranty declaration

The company provides this unique warranty statement for the product without other written or oral warranty statements.

Any commodity route or metaphor applicable to any special purpose is limited to the warranty period of 12 months in this written warranty statement.

In any case, the company is not liable for direct, indirect, special, accidental or ensuing damages(including lost profits)regardless of the warranty statement, contract, negligence, or any other legal theory.