

OCBS-D007

STOCKTAKING HANDHELD TERMINAL

USER'S MANUAL

OCOM Technologies Limited.

CHAPTER I BRIEFING	1
1.1 Package List	1
1.2 Safety Cautions	1
1.3 Battery Charging	1
1.4 Battery Installation	2
1.5 Accessories	3
CHAPTER II FUNCTIONS & OPERATIONS	4
2.1 Overview	4
2.2 Basic Operation	5
2.2.1 Bootup	5
2.2.2 Shutdown	5
2.2.3 Status Bar	5
2.3 Main Functions	5
2.3.1 Receiving/Shipping/Cycle Count/Damage/Replenish	5
2.3.2 Other	6
2.3.3 Upload	6
2.3.4 Search	6
2.3.5 Download	6
2.3.6 Settings	6
2.3.7 Communication	6
2.3.8 Advanced	6
CHAPTER III WIRELESS RECEIVER	7
3.1 Installation	7
3.2 Check the Port Number	8
CHAPTER IV PC APPLICATION	8
4.1 Installation	8
4.2 Operation Description	10
4.2.1 Update Program	10
4.2.2 Download Item File	12
4.2.3 System Settings	19
4.2.3.1 Communication	19
4.2.4 Data Storage	20
4.2.5 Query	22
4.2.6 Export File	22
4.2.7 Empty Data	27
4.2.8 Language Switch	27
WARRANTY	27

CHAPTER I BRIEFING

1.1 Package List

1. One Stocktaking handheld terminal
2. One USB mini-receiver;
3. One cable;
4. One charger;
5. One CD (contains User's Manual, PC Application, Receiver Driver and Update Utility)

1.2 Safety Cautions

Please read the following concise rules. Violation of these rules may cause danger or infringement of the law.



Boot in safety: Don't switch on the handheld terminal when wireless device is forbidden or is to cause interference and danger.



Interference: all wireless devices may be subject to radio interference which may affect their performance.



Fare use: the handheld terminal terminal can be only used in the purpose described in this manual.



Maintenance: only technically qualified person can disassemble the handheld terminal terminal.



Accessories and battery: use only approved accessories and battery. Don't connect to inconsistent products.



Water-proof: the handheld terminal terminal is not water-proof, please keep it dry.




Data backup: please make a backup for the data saved in the handheld terminal terminal.



Connection: If in need of connecting to other devices, please obtain necessary safety instructions from their manual or manufacturer. Never connect to an inconsistent device.

1.3 Battery Charging

1.3.1 battery icon: a battery icon  displays on top right of the screen to show the battery power. When the battery is running low, the icon blinks. As the battery level going too low to maintain any operation, the Stocktaking shuts down automatically.

1.3.2 battery charging: simply plug one end of the charger into the power outlet and the other end into the Stocktaking handheld terminal terminal terminal.

CAUTIONS:

- (1) The Stocktaking accepts only authorized battery and charger;
- (2) For first time charging, please make sure the charging time is over 10 successive

hours;

(3) Battery may self-discharge. Please charge up the battery before use if the battery stands idle for a long period;

(4) If a fully charged battery's life goes short greatly, please replace the battery with a new one;

(5) Do not impact, shock or throw the battery violently, or it may cause leakage, damage or even explosion.

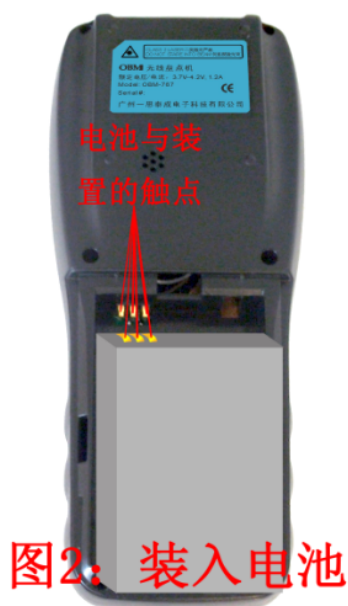
1.4 Battery Installation

1.4.1 Remove battery cover. Turn the Stocktaking to its back, put some stress on the battery cover, then push it downward as figure 1 shows:



图1：拆电池盖

1.4.2 Load battery. Make sure the metal contacts on the battery and the Stocktaking are in the same position as figure 2 shows:



1.4.3 Refit battery cover. Put some stress on the cover to fit it back to its place, then push upward as figure 3 shows:



1.5 Accessories

1.5.1 Polymer Li-ion Battery



1.5.2 Cable and Receiver



CHAPTER II FUNCTIONS & OPERATIONS

2.1 Overview



Figure 2-1

1. SCREEN
 2. SCAN/ON: turn on the Stocktaking handheld terminal or scan a barcode
 3. OK: confirm an operation
 4. F2: data upload via USB cable under the BATCH mode
 5. F1: data upload wirelessly under the BATCH mode
 6. Left Arrow Key: switch between Real-time and Save mode
 7. Down Arrow Key: move downward
 8. Star Key: switch among number / capital letter / small letter (valid only in manual input states)
 9. Return: return to last menu
 10. F3: show the cursor (valid only in manual mode)
 11. F4: backspace (valid only in cursor blink state)
 12. UP ARROW KEY: move upward
 13. Right Arrow Key: switch between auto and manual mode
 14. OFF: shutdown the Stocktaking handheld terminal
- Special function keys under input state:
- In the barcode line –under alphabet state, a decimal point or a minus sign appears in turn

by press key 1 successively; while a blank or an exclamation point appears in turn by press key 0.

In the quantity line –press F3 to enter negative number and star key to enter decimal point.

2.2 Basic Operation

2.2.1 Bootup

Make sure the battery is properly loaded and fully charged. Long press the SCAN/ON key until a beep sounds to indicate the startup of the Stocktaking and enter the welcome page.

2.2.2 Shutdown

Hold down the OFF key for 1.5 seconds to turn off the Stocktaking handheld terminal.

2.2.3 Status Bar

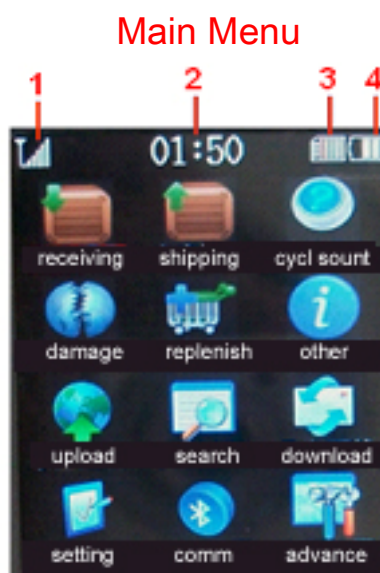


Figure 2-2

1. Signal strength
2. Time
3. Memory used
4. Battery level

2.3 Main Functions

2.3.1 Receiving/Shipping/Cycle Count/Damage/Replenish

Choose one menu item then press OK to enter it. Press Left Arrow key to switch between REAL-TIME and SAVE mode, while Right Arrow key to select manual or auto mode. Under the manual mode, the Up Arrow key and Down Arrow key are activated for entering batch number and quantity, while other information is automatically withdrawn from the downloaded item file. And the operation status is shown right below.

2.3.2 Other

Reserved for extended function

2.3.3 Upload

Highlight UPLOAD in the main menu and press OK to enter the sub-menu. In the sub-menu page, you can see a summary list for data unsent. Press F1 or F2 to upload data to the computer.

F1: send data wirelessly. This is available only when the signal is good and the PC application is running.

F2: send data via a cable. Click DOWNLOAD on the menu bar of the pc application and choose RECEIVE FROM USB.

* Cable transmission is much faster than wireless transmission.

00: 00		
Upload		
1.all: 100		
2.rece: 20		
3.ship: 40		
4.count: 35		
5.dama: 5		
6.repl: 0		
F1-start wireless		
F2-start USB		
OK	MENU	ESC

2.3.4 Search

summary: a summary list to show data saved in the Stocktaking handheld terminal and the computer.

by category: search by [type + barcode]

by time: search by [type + time + barcode]

2.3.5 Download

Download item file and update the Stocktaking Handheld terminal program, which must work together with the PC application.

2.3.6 Settings

Set date, time, off time, time display and language.

2.3.7 Communication

Set the working channel and system code which must be the same as that in the PC application.

2.3.8 Advanced

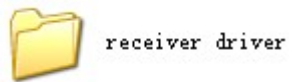
Clear the memory of the Stocktaking Handheld terminal (clear only the operational information) and restore to factory default.

CHAPER III WIRELESS RECEIVER

For the first time use of OCBS-D007 Stocktaking Handheld terminal, you need to install a driver for the wireless receiver.

3.1 Installation

Step 1: Find the following folder in the CD attached:



Double click and access to the following files:



Figure 3-1

Double click " STOCKCOUNTDRInstaller.exe " and open a dialog as below:

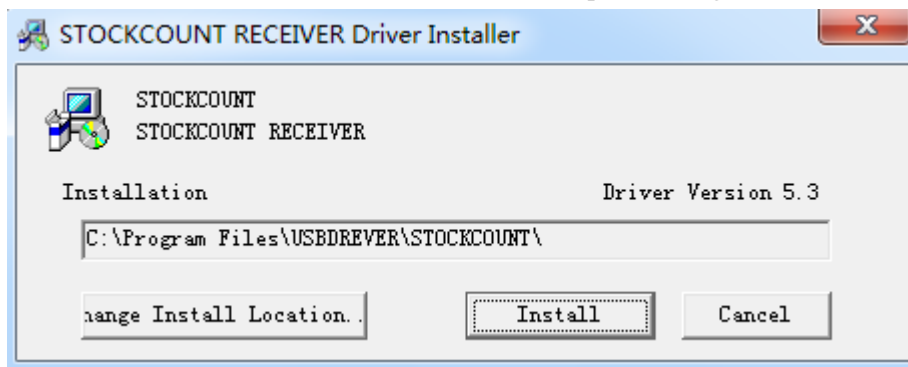


Figure 3-2

Click " Install " and wait while system searching

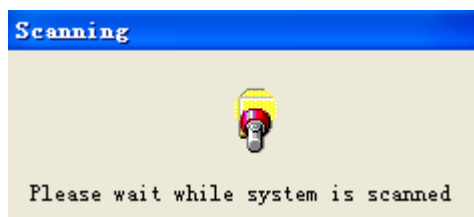


Figure 3-3

Installation succeeded.



Figure 3-4

Notice: After installation of the driver, we can check the receiver COM port in the "Device Manager " dialog box.

3.2 Check the Port Number

On the Desktop right-click My Computer/properties/hardware/device manager, and opens the following window:

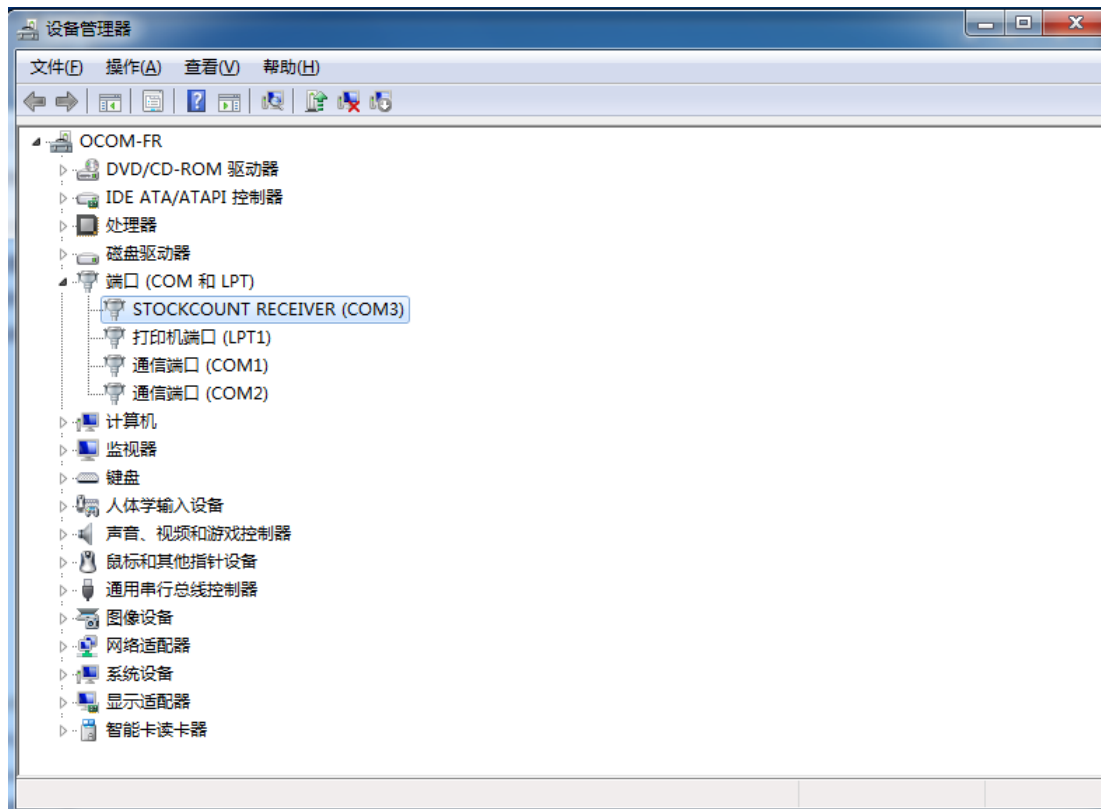


Figure 3-9

The list here displays that STOCKCOUNT RECEIVER's COM port is COM3. Once the driver is installed, the receiver can be plugged and played ever since.

CHAPTER IV PC APPLICATION

4.1 Installation

Find the following folder in the CD attached:

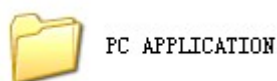
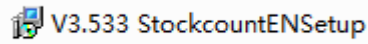
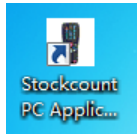


Figure 4-1

Double click on the application installer:

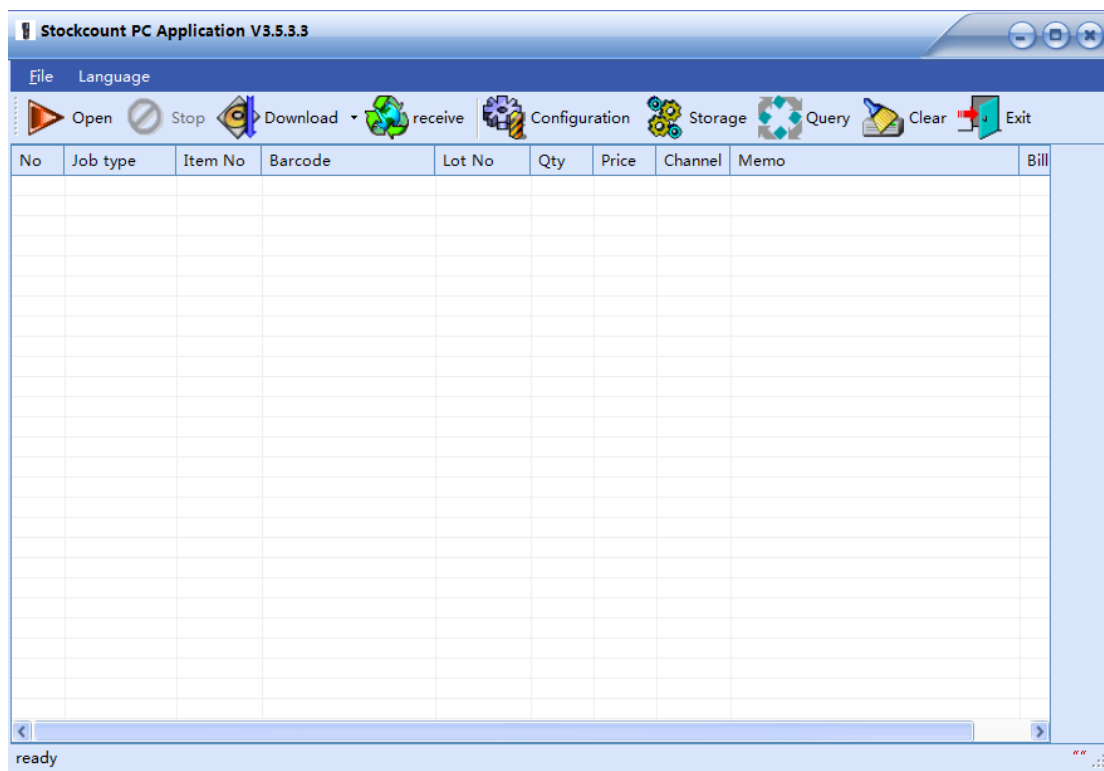
**Figure 4-2**

Follow the instructions of the wizard until completion and the application icon

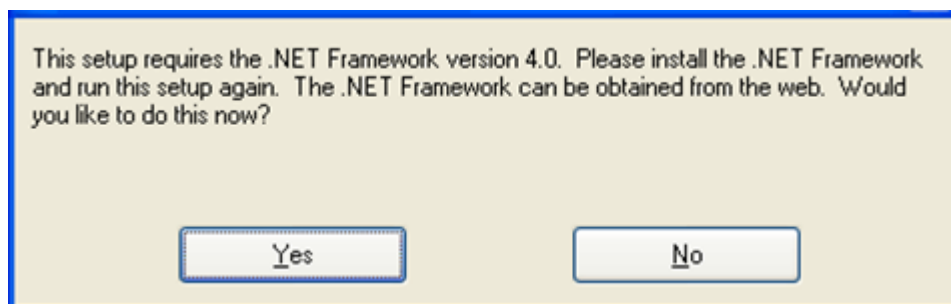


will be created on the desktop.

Double click it, the application dialog should pop up as below:

**Figure 4-3**

Note: during installation if an error message pops up as below:

**Figure 4-4**

Click YES and then unpack the folder of PC APPLICATION and install the .net program:



Figure 4-5

This may take a few minutes. After completion, go back to install the application again as shown in figure 4-1 & 4-2

4.2 Operation Description

Download function is accomplished by the cable attached.

4.2.1 Update Program

In the Stocktaking Handheld terminal, highlight DOWNLOAD in the main menu and press OK into the download page:

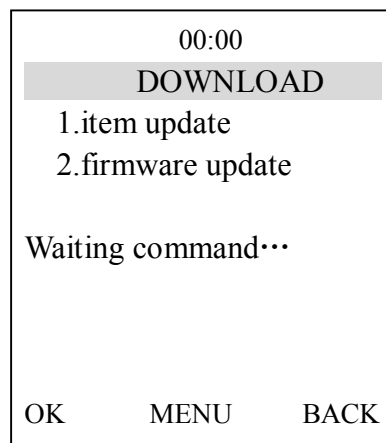
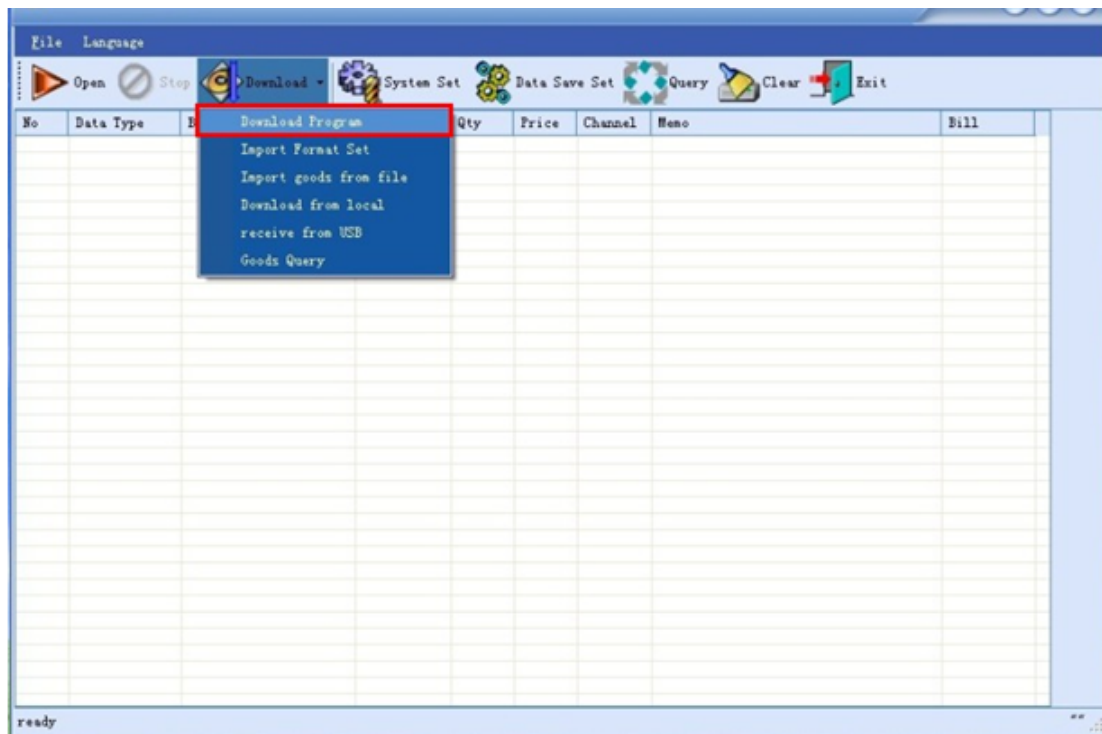
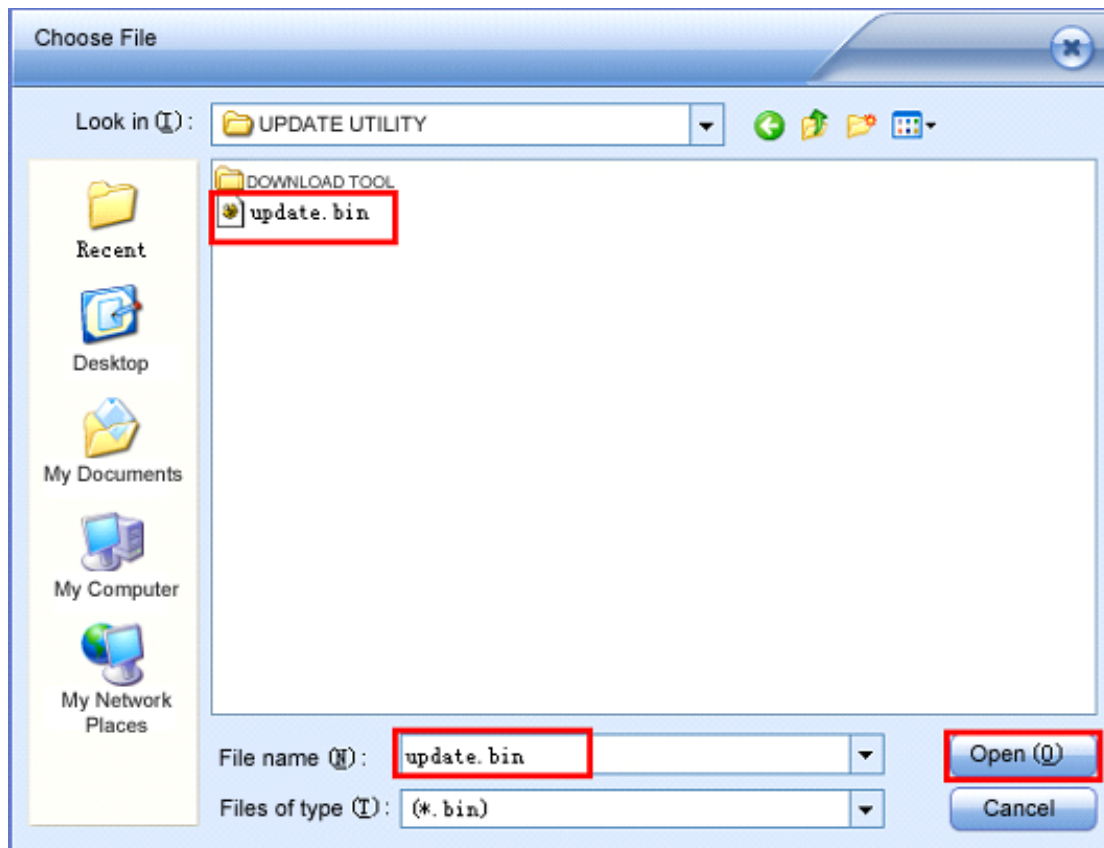


Figure 4-6

Open the PC application, select “download program” from the DOWNLOAD drop-down menu:

**Figure 4-7**

A dialog box pops up. Specify the path of the file (..\update utility\update.bin) then click OPEN:

**Figure 4-8**

The Stocktaking Handheld terminal shows “downloading”. When the download has

completed, the handheld terminal will reboot automatically. A new program is updated to the handheld terminal. Meanwhile the PC application also gives a notification of completion.

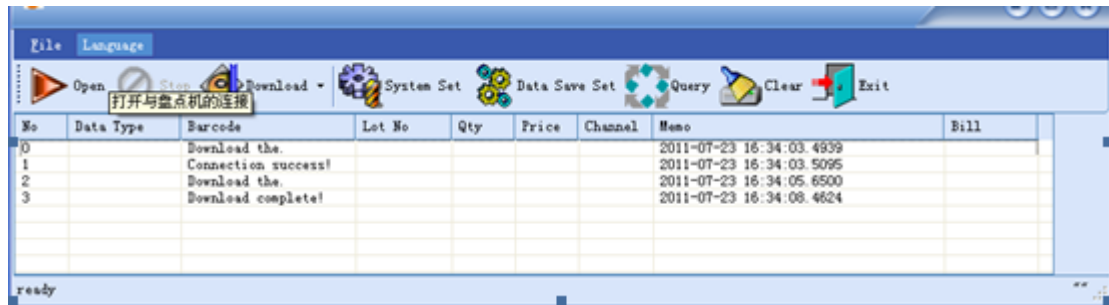


Figure 4-9

4.2.2 Download Item File

In the Stocktaking Handheld terminal, highlight DOWNLOAD in the main menu and press OK into the download page:

Open the PC application, select from the DOWNLOAD drop-down menu “Import Format Set”:

FileFormatSetting

Format Setting Save

File Type: GOODS

Import Setting

Format: TXT

Separator: Fixed Length

☒ Has Title

Field Name	Field Title	Import?	Index	Length
GoodsID	GoodsID	N	0	0
Barcode	Barcode	N	0	0
Goodsname	Goodsname	N	0	0
Spec	Spec	N	0	0
Unit	Unit	N	0	0
Stock Qty	Stock Qty	N	0	0
InPrice	InPrice	N	0	0
SalePrice	SalePrice	N	0	0
Discount...	Discount ...	N	0	0
LotNo	LotNo	N	0	0
ProductDate	ProductDate	N	0	0
ExpireDate	ExpireDate	N	0	0
Memo	Memo	N	0	0
blank1	blank1	N	0	0
blank2	blank2	N	0	0
blank3	blank3	N	0	0

Save Return Close

Figure 4-10

Configuration Instruction:

- 1.File Type: GOODS
- 2.Format: MS Excel, CSV and TXT format available
- 3.Separator: any character will do. Default choice includes comma, semicolon, TAB and fix-length.
- 4.with Title: check to import a file with field headings
- 5.Field Name: default field names
- 6.Field Title: custom field name
- 7.Import: Y for importing the field; N for not importing
- 8.Index: indicates the original field sequence
- 9.length: required only for fix-length file

EXAMPLE:**Import an EXCEL file:****STEP 1: IMPORT FORMAT CONFIGURATION**

There are 16 columns in this excel file, but we need only the 5 fields as the item code, item name, unit, specification and barcode.

number	Item Code	Item Name	Unit	Specification	Stock Qty	coll	barcode	inprice	ou
1	00002	750ml Chardonnay dry white wine	ml	750ml	20	guangzhou	10970081	2.5	
2	00003	750ml Shreeze dry white wine	ml	750ml	50	tianjin	6924147654015	3	
3	00004	Gillette induction slide	g	100g	10	beijing	6923878310146	4.5	
4	00005	DC dried vegetable&fruit 250g	g	250g	100	hunan	6923878310153	2.5	
5	00006	DC dried jackfruit 250g	g	250g	500	hunan	6923413200093	3	
6	00007	DC dried jackfruit 100g	g	100g	200	hunan	20040217	4.5	
7	00008	potted coffee peanut 135g	g	135g	150	guangzhou	6912620184111	4	
8	00010	TH bagged coffee peanut 150g	g	150g	170	beijing	20000292	1.2	
9	00011	potted coconut peanut 135g	g	135g	150	tianjin	20030514	3.8	
10	00012	premium Thai sweet rice 25kg	kg	25kg	125	jiangsu	6923878310115	5	
11	00013	Bow E0349 orange printing waltz	g	25g	106	tianjin	6923878310108	3.5	
12	00014	Korean small dried noodles 1400g	g	1400g	158	hubei	6901891568720	2	
13	00015	Korean small dried noodles	g	100g	179	hubei	6935142890285	1.8	
14	00016	Korean small dried noodles	g	100g	225	hubei	6921728408241	2.2	

Figure 4-11

The import format is set as below:

FileFormatSetting

Format Setting Save

File Type: GOODS

Import Setting

Format: MS Excel

Separator: Comma

☒ Has Title

Field Name	Field Title	Import?	Index
GoodsID	GoodsID	Y	2
Barcode	Barcode	Y	8
Goodsname	Goodsname	Y	3
Spec	Spec	Y	5
Unit	Unit	Y	4
Stock Qty	Stock Qty	N	0
InPrice	InPrice	N	0
SalePrice	SalePrice	N	0
Discount...	Discount ...	N	0
LotNo	LotNo	N	0
ProductDate	ProductDate	N	0
ExpireDate	ExpireDate	N	0
Memo	Memo	N	0
blank1	blank1	Y	1
blank2	blank2	Y	6
blank3	blank3	Y	7

Save Return Close

Figure 4-12

STEP 2: IMPORT ITEM FILE INTO BACKEND DATABASE

Click SAVE and CLOSE when format is configured. Then on the menu bar, click DOWNLOAD/IMPORT FROM FILE and specify the excel file to be imported:

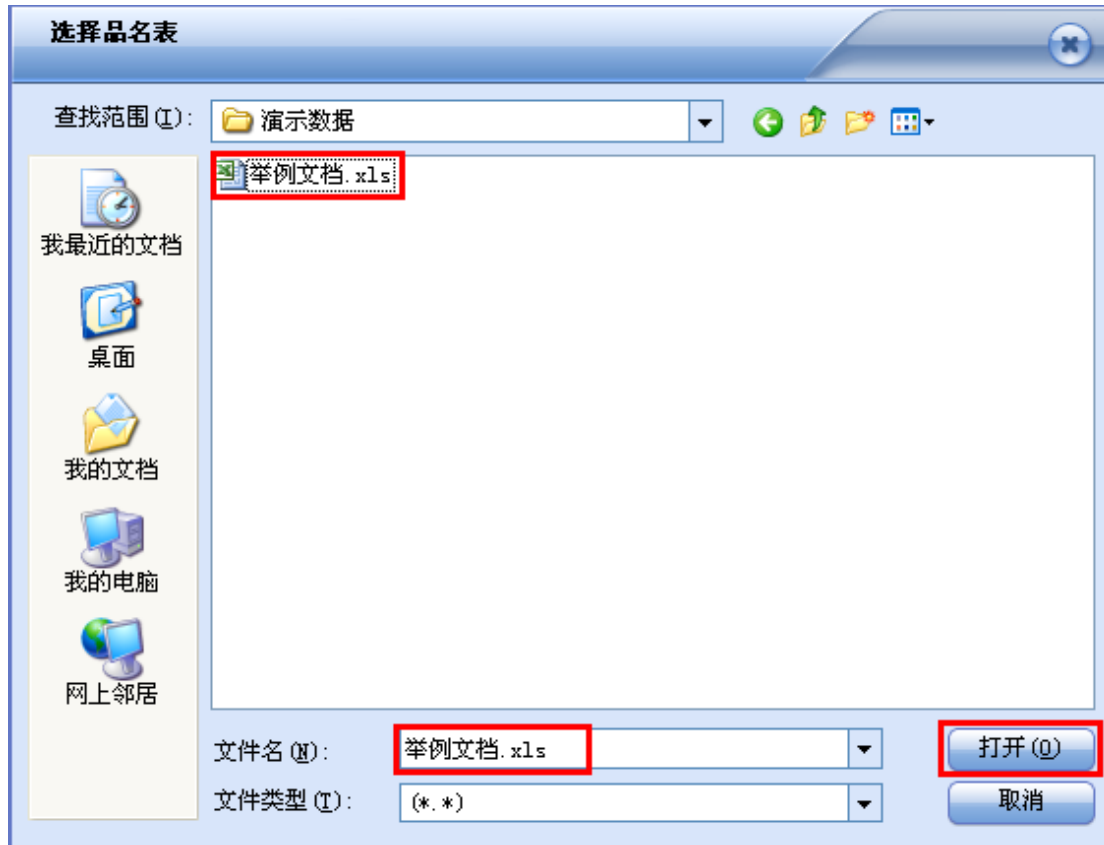


Figure 4-13

Select a work sheet:

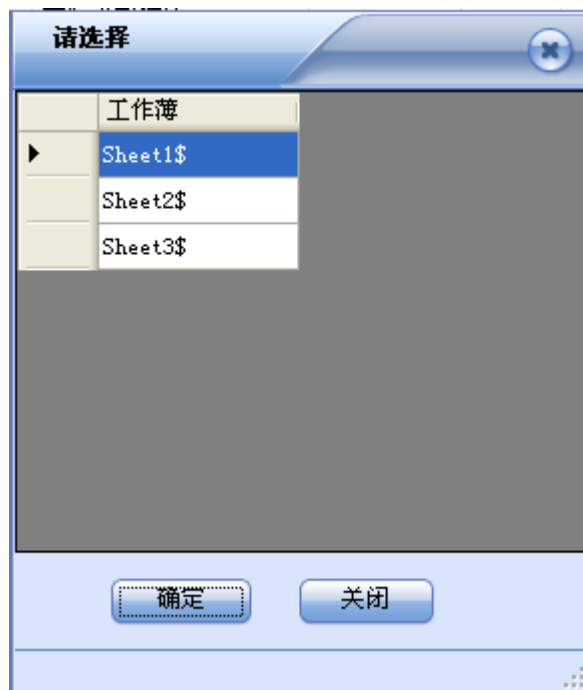


Figure 4-14

Confirm to start the import. When "import succeeded!" appears in the PC application, the item file has been imported into the backend database.

Figure 4-15

STEP 3: DOWNLOAD ITEM FILE TO THE HANDHELD TERMINAL

Select DOWNLOAD FROM LOCAL ITEM SHEET from the drop-down menu of DOWNLOAD, and update backend data to the Stocktaking handheld terminal. If download has been successfully proceeding, the handheld terminal screen will refresh automatically.

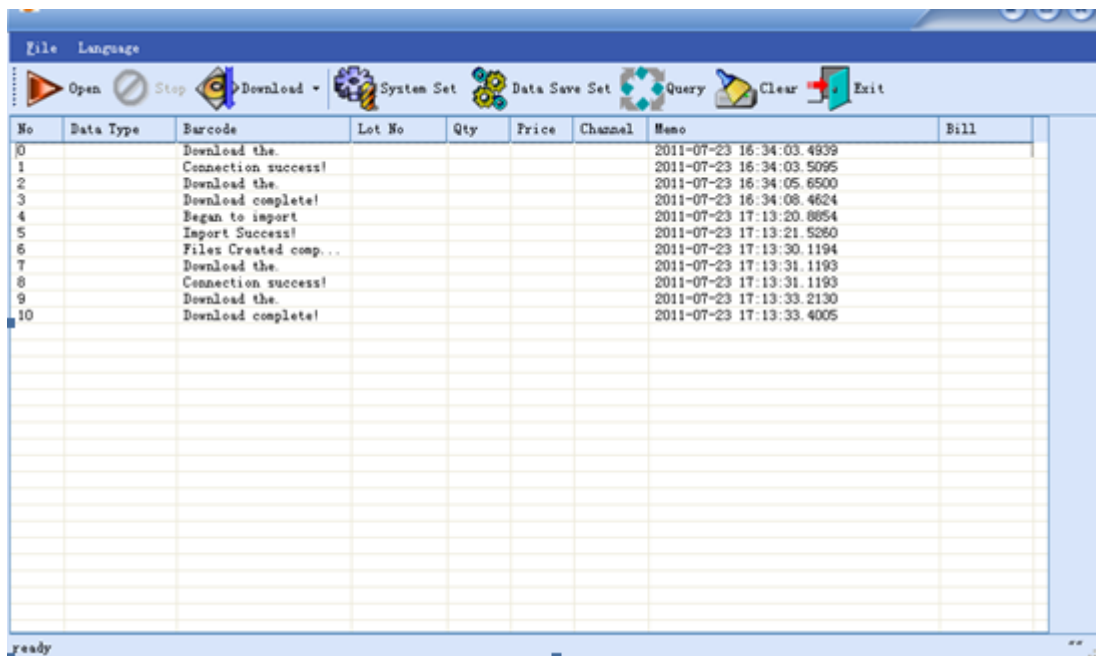


Figure 4-16

Import a TXT file:

1. original item information is as below:

The screenshot shows a text file named 'good.txt' with the following content:

9556138003013	,Strawberry Girl chocolate toffee 160g	,50.80
9556138003006	,Barbie corn taste candy 80g	,32.80
9556138002993	,Barbie durian toffee 200g	,40.80
9556138002986	,Strawberry Girl pink extra-rich caramel 72g	,15.80
9556138002948	,Barbie butter coffee candy 55g	,16.80
9556138002863	,Strawberry Girl England cream candy 65g	,21.80
9556138002856	,TBATH extra-rich caramel 45g	,16.80
9556138002832	,Barbie England cream candy 75g	,20.80
9556138002733	,Strawberry Girl corn taste candy 80g	,20.80
9556138002719	,Barbie assorted juice candy 80g	,25.80
9556138002689	,durian taste toffee 120g	,27.80
9419840101524	,cutting nippers	,8.20
9419840101517	,sharp nose pliers	,8.20
9332571003250	,750ml Chardonnay dry white wine	,241.80
9332571000204	,750ml Shreeze dry white wine	,241.80
9300627025013	,Gillette induction slide	,49.80

2. format is set as below:

FileFormatSetting

Format Setting Save

File Type: GOODS

Import Setting

Format: TXT

Separator: Comma

☐ Has Title

	Field Name	Field Title	Import?	Index
▶	GoodsID	GoodsID	N	0
	Barcode	Barcode	Y	1
	Goodsname	Goodsname	Y	2
	Spec	Spec	N	0
	Unit	Unit	N	0
	Stock Qty	Stock Qty	N	0
	InPrice	InPrice	Y	3
	SalePrice	SalePrice	N	0
	Discount...	Discount ...	N	0
	LotNo	LotNo	N	0
	ProductDate	ProductDate	N	0
	ExpireDate	ExpireDate	N	0
	Memo	Memo	N	0
	blank1	blank1	N	0
	blank2	blank2	N	0
	blank3	blank3	N	0

Save Return Close

Import a fix-length TXT file:

- There are 6 columns in this file, but we need only the 5 fields as the barcode, item name, specification, price and barcode. Cost is not allowed to be imported:

fix-length txt test.txt - 记事本

File Name	Field Title	Import?	Index
0018023635277	wire ball (3pcs)	pcs	7.50 5.0000 0.0000
0026102146460	Korean wire ball		21.00 14.0000 0.0000
0026102235416	cutting nippers		23.00 15.5000 0.0000
0026102484845	sharp nose pliers	piece	31.50 21.0000 0.0000
0026102808832	chocolate toffee	g	8.70 5.8000 0.0000
0026102808856	durian taste toffee		14.30 9.5000 0.0000
0026102927472	Barbie England cream candy		75.00 50.0000 0.0000
0029321619197	durian taste toffee		45.00 30.0000 0.0000
0029321621923	DC dried jackfruit		45.00 30.0000 0.0000
0037000078388	DC dried jackfruit	g	15.80 11.7857 0.0000
0037000078395	potted coffee peanut	g	15.80 11.7857 0.0000
0037000078401	potted coconut peanut	g	5.00 4.3333 0.0000
0037000078418	TBATH extra-rich caramel	g	5.00 4.3300 0.0000
0037000080565	Barbie butter coffee	g	5.00 4.3300 0.0000

- format is set as below:

FileFormatSetting

Format Setting Save

File Type: GOODS

Import Setting

Format: TXT

Separator: Fixed Length

☐ Has Title

	Field Name	Field Title	Import?	Index	Length
	GoodsID	GoodsID	N	0	0
	Barcode	Barcode	Y	1	20
	Goodsname	Goodsname	Y	2	30
	Spec	Spec	Y	3	14
	Unit	Unit	N	0	0
	Stock Qty	Stock Qty	Y	6	9
	InPrice	InPrice	N	0	0
	SalePrice	SalePrice	Y	4	9
	Discount...	Discount ...	N	0	0
	LotNo	LotNo	N	0	0
	ProductDate	ProductDate	N	0	0
	ExpireDate	ExpireDate	N	0	0
	Memo	Memo	N	0	0
	blank1	blank1	Y	5	9
	blank2	blank2	N	0	0
	blank3	blank3	N	0	0

Save Return Close

STEP 4: ITEM SEARCH

Select DOWNLOAD/ITEM SEARCH and view commodity details imported in the backend database:

File Language

Open Stop Download System Set Data Save Set Query Clear Exit

No	Data Type	Qty	Price	Channel	Memo	Bill
0					2011-07-23 16:34:03.4939	
1					2011-07-23 16:34:03.5095	
2					2011-07-23 16:34:05.6500	
3					2011-07-23 16:34:08.4624	

Download Program
Import Format Set
Import goods from file
Download from local
receive from USB
Goods Query

GoodsID	Barcode	GoodsName	Spec	Unit	Stock Qty	InPrice	SalePrice
8803314015249		Bow E0349 orange printing walts			0	22.9	0
8802188000917		wire ball (Cpes)			0	1.6	0
8802790222240		Korean wire ball			0	1.3	0
8802800335236		Korean medium dried noodles 700g			0	3.3	0
8802800335243		Korean medium dried noodles 1...			0	6.4	0
8802800335250		Korean small dried noodles 700g			0	3.3	0
8802800335267		Korean small dried noodles 1400g			0	6.4	0
8858584001461		premium Thai sweet rice 25kg			0	200	0
8934661110988		potted coconut peanut 135g			0	9.8	0
8934661133468		TM bagged coffee peanut 150g			0	6.8	0
8934661190188		potted coffee peanut 135g			0	9.8	0
8934743012070		DC dried jackfruit 100g			0	14.8	0
8934743012117		DC dried jackfruit 250g			0	33.8	0
8934743102115		DC dried vegetablefruit 250g			0	21.8	0
9300627025013		Gillette induction slide			0	49	0
9332571000204		750ml Shrenze dry white wine			0	241.8	0
9332571003250		750ml Chardonnay dry white wine			0	241.8	0
9419840101517		sharp nose pliers			0	8.2	0

4.2.3 System Settings

Select SYSTEM SETTING and enter the SYSTEM PARAMETER page as figure4-17:

SystemSetting

Setting

COM Port: COM1 Communicate Set

Soft Intf: Not Fixed DB connection

☐ Read & Write to Software DB

☒ Real Query Local ☐ Insert into intf DB

☒ Local Backup

☒ Allow Repeat Barcode (Enable when Local Backup)

Skin: default

☐ Auto MinimizeRun On Start

Barcode Num: 0

Save Return Close

Figure 4-17

Pick the COM port number mapped to the wireless receiver.

4.2.3.1 Communication



Figure 4-18

Check the present registered channel and system number by clicking “set channel” and “set system no”

433MH configuration: Channel and system number are preset in the Stocktaking and corresponds to those in the PC application. Generally, channel is set to be 35 which gets better transmission effect (change channel if transmission is not good enough). One receiver can responds to several handheld terminals. In this case, register different channels for each handheld terminal. However, it may affect the scan rate under real-time mode if receiver is responding to over 5 handheld terminals at the same time.

4.2.4 Data Storage

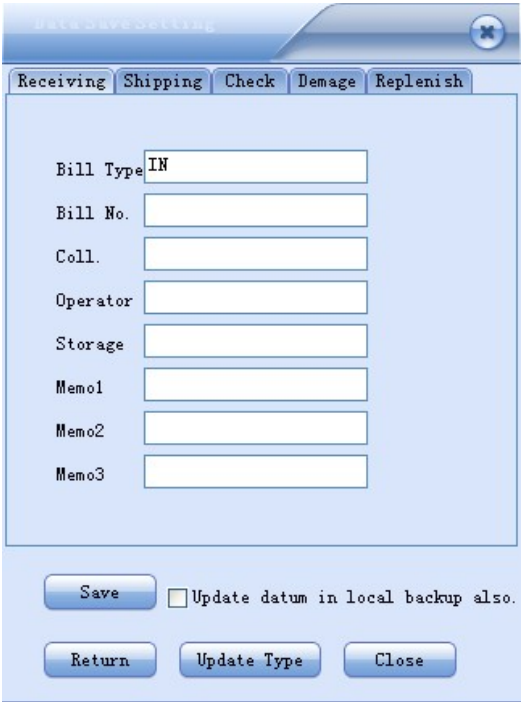


Figure 4-19

In pages of Receiving/Shipping/Cycle Count/Damage/Replenish, you can preset information

as "bill no.", "supplier", "operator", etc. to define the scanned data.

Here is an example of making a stocktaking list with a heading row:

Step 1: In the dialog box shown in figure4-2-4, select "cycle count" page and input header information one by one, then click "save":

Figure 4-20

Notes: ☐ Update datum in local backup also. : Whether to add headers as well to data saved before.

: change the language of header to Chinese/English

Step 2: Click on "Start" and begin to scan barcodes:

When the screen is full, you can right click the mouse and select “clear” to clear screen. This operation is only for visual clearance, the data is not deleted.

Figure 4-21

Step 3: Click "pause" then "query" button and open the "Query & Export" dialog. Click "query" and shows the following dialog:

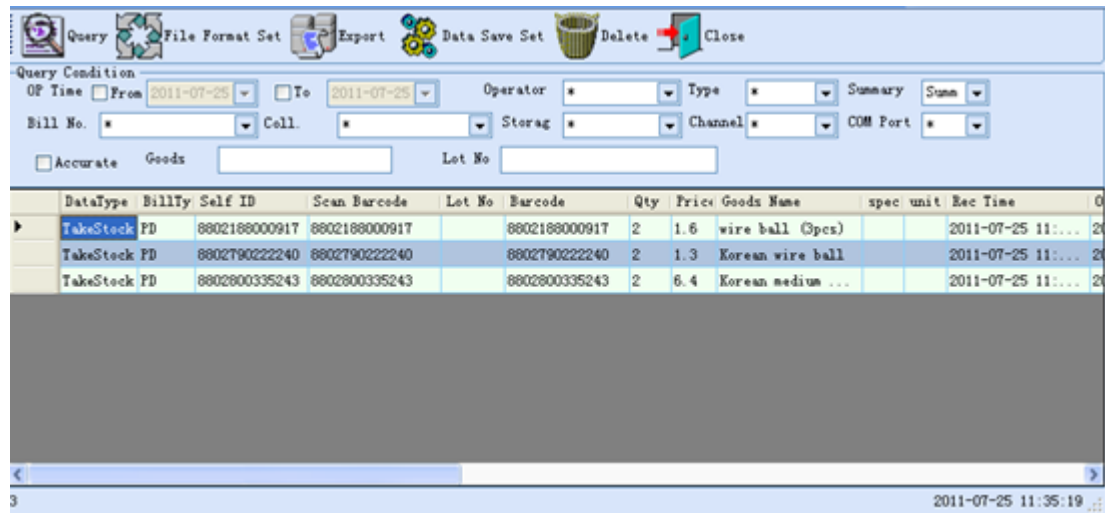


Figure 4-22

Now you can see that the barcode scanned is mapping with information set just now: bill no., warehouse, etc.

Notice: The setting will remain till the PC application is closed. When the PC application is closed, all information will be removed automatically.

4.2.5 Query

When all items are scanned, you can query, export and cleanup data in specified conditions.

After query criterion is set, click "query" button and the result will be shown as below:

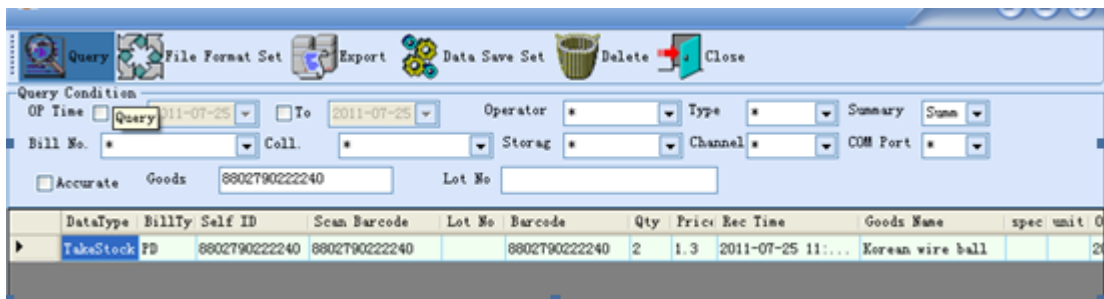


Figure 4-23

4.2.6 Export File

You could export and save query results in various file formats (eg. xls or txt).

Click QUERY and open the QUERY & EXPORT dialog.

Click FORMAT and pops up the following dialog box:

FileFormatSetting

Format Setting Save

File Type: EXPORT

Export Setting

Format: TXT Contain symbolic: " "

Separator: Fixed Length ☒ Number Field Except Digit number: 4

☒ Has Title ☐ Allow Empty Data Fixed Length Separator: :

Field Name	Field Title	Export?	Index	Length
DataType	DataType	N	0	0
BillType	BillType	N	0	0
ScanBarcode	ScanBarcode	N	0	0
SelfID	SelfID	N	0	0
Barcode	Barcode	N	0	0
LotNo	LotNo	N	0	0
Goodsname	Goodsname	N	0	0
Qty	Qty	N	0	0
Price	Price	N	0	0
RecTime	RecTime	N	0	0
OPTime	OPTime	N	0	0
Operator	Operator	N	0	0
Collabor...	Collaborator	N	0	0
Storage	Storage	N	0	0
BillNo	BillNo	N	0	0
Channel	Channel	N	0	0

Save Return Close

Figure 4-24

Configuration instruction:

1. file type: export data;
2. file format: Excel, TXT, CSV, XML available
3. mark: add a quotation mark to each field (valid only for TXT file)
4. except number: no quotation mark to numbers even though the MARK option is selected.
5. separator: any character will do. Default choice includes comma, semicolon, TAB and fix-length.
6. header: export a file with field headers you defined.
7. blank data source: allow to export blank data source.
8. fix-length separator: export a fix-length file with a separator.
9. decimal: -1: remove decimal; 0: rounded to integer, 1: one decimal

EXAMPLE:

Step 1: configure the format of the file to be exported

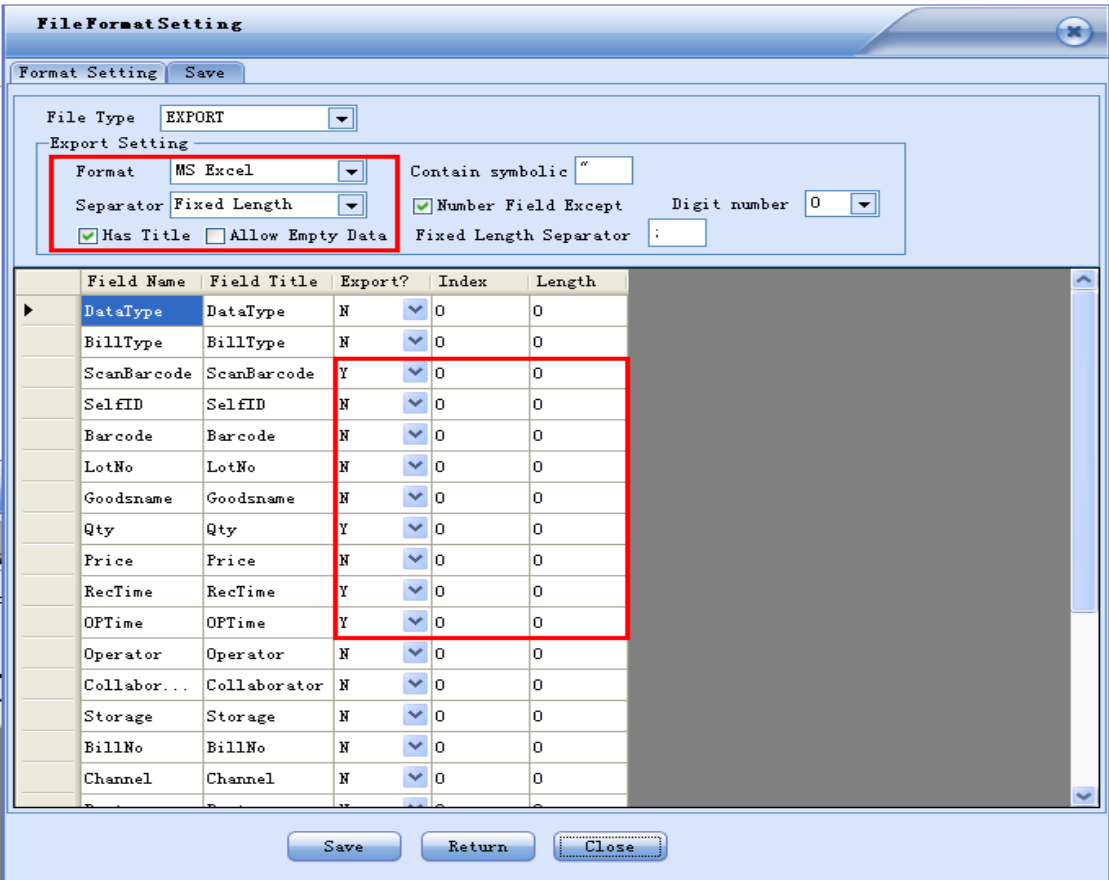


Figure 4-25

Click SAVE and OK to close the dialog box then click EXPORT again

Step 2: specify a path for saving the exported file:

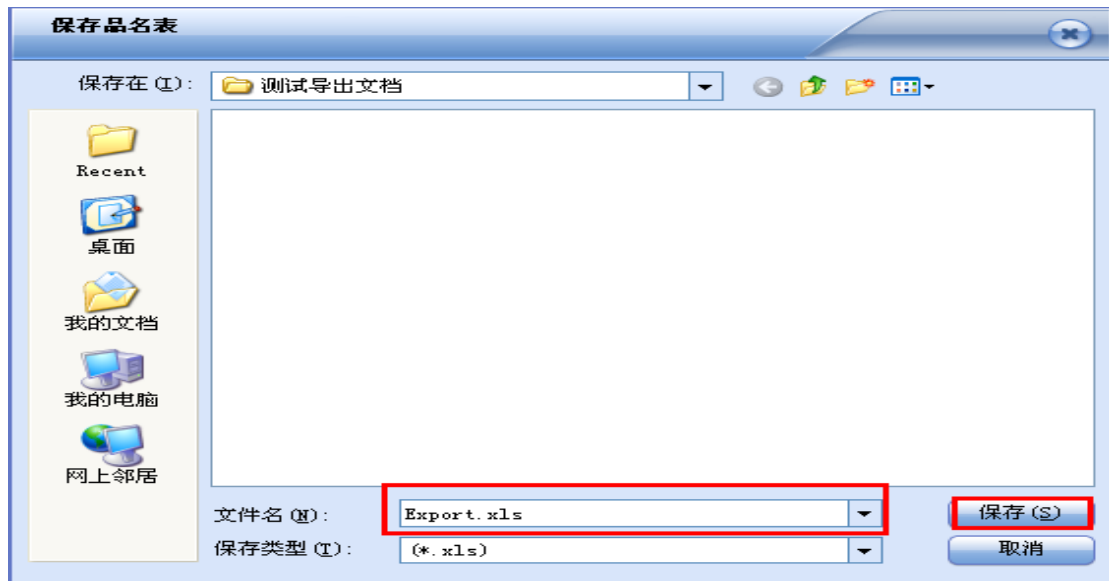


Figure 4-26

Enter a file name (eg. Export.xls) and click SAVE.

Step 3: Open the exported file:

	A1	fx	ScanBarcode			
	A	B	C	D	E	F
1	ScanBarcode	Qty	RecTime	OPTime		
2	8802188000917	1	2011-07-25 11:33:58	2011-07-25 11:34:10		
3	8802188000917	1	2011-07-25 11:33:56	2011-07-25 11:34:09		
4	8802790222240	1	2011-07-25 11:33:54	2011-07-25 11:34:07		
5	8802790222240	1	2011-07-25 11:33:52	2011-07-25 11:34:04		
6	8802800335243	1	2011-07-25 11:34:00	2011-07-25 11:34:12		
7	8802800335243	1	2011-07-25 11:33:59	2011-07-25 11:34:11		
8						
9						

Figure 4-27

An exported TXT file looks like this:

```
ScanBarcode,Qty
'8802188000917',1
'8802188000917',1
'8802790222240',1
'8802790222240',1
'8802800335243',1
'8802800335243',1
```

Figure 4-28

It's format should be configured as below:

FileFormatSetting

Format Setting Save

File Type: EXPORT

Export Setting

Format: TXT

Separator: Comma

Contain symbolic: ' ' (empty)

☒ Has Title ☐ Allow Empty Data

☒ Number Field Except Digit number: 0

Fixed Length Separator: (empty)

Field Name	Field Title	Export?	Index
DataType	DataType	N	0
BillType	BillType	N	0
ScanBarcode	ScanBarcode	Y	0
SelfID	SelfID	N	0
Barcode	Barcode	N	0
LotNo	LotNo	N	0
Goodsname	Goodsname	N	0
Qty	Qty	Y	0
Price	Price	N	0
RecTime	RecTime	N	0
OPTime	OPTime	N	0
Operator	Operator	N	0
Collabor...	Collaborator	N	0
Storage	Storage	N	0
BillNo	BillNo	N	0
Channel	Channel	N	0

Save Return Close

Figure 4-29

An exported fix-length TXT file looks like this:

```
8802188000917      1
8802188000917      1
8802790222240      1
8802790222240      1
8802800335243      1
8802800335243      1
```

Figure 4-30

It's format should be configured as below:

The screenshot shows the 'FileFormatSetting' dialog box with the 'Format Setting' tab selected. The 'File Type' is set to 'EXPORT'. The 'Export Setting' section is highlighted with a red box and contains the following configurations:

- Format: TXT
- Separator: Fixed Length
- Number Field Except: ☒ (checked)
- Digit number: 0
- Has Title: ☐ (unchecked)
- Allow Empty Data: ☐ (unchecked)
- Fixed Length Separator: (empty field)

Below the settings is a table with columns: Field Name, Field Title, Export?, Index, and Length. The 'ScanBarcode' and 'Qty' rows are highlighted with a red box.

Field Name	Field Title	Export?	Index	Length
DataType	DataType	N	0	0
BillType	BillType	N	0	0
ScanBarcode	ScanBarcode	Y	0	20
SelfID	SelfID	N	0	0
Barcode	Barcode	N	0	0
LotNo	LotNo	N	0	0
Goodsname	Goodsname	N	0	0
Qty	Qty	Y	0	8
Price	Price	N	0	0
RecTime	RecTime	N	0	0
OPTime	OPTime	N	0	0
Operator	Operator	N	0	0
Collabor...	Collaborator	N	0	0
Storage	Storage	N	0	0
BillNo	BillNo	N	0	0
Channel	Channel	N	0	0

At the bottom of the dialog are three buttons: 'Save', 'Return', and 'Close'.

Figure 4-31

4.2.7 Empty Data

In the "QUERY & EXPORT" interface, click "Empty data" and pop up a dialog box as below:

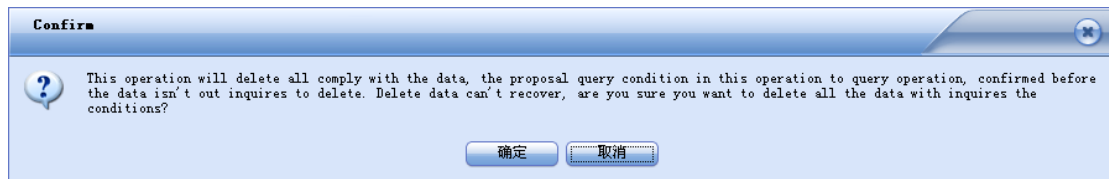


Figure 4-32

Select YES.

4.2.8 Language Switch

Default application is in Chinese. For an English version, just click LANGUAGE and select ENGLISH from the drop-down menu. Likewise, choose English as the language for the Stocktaking Handheld terminal.

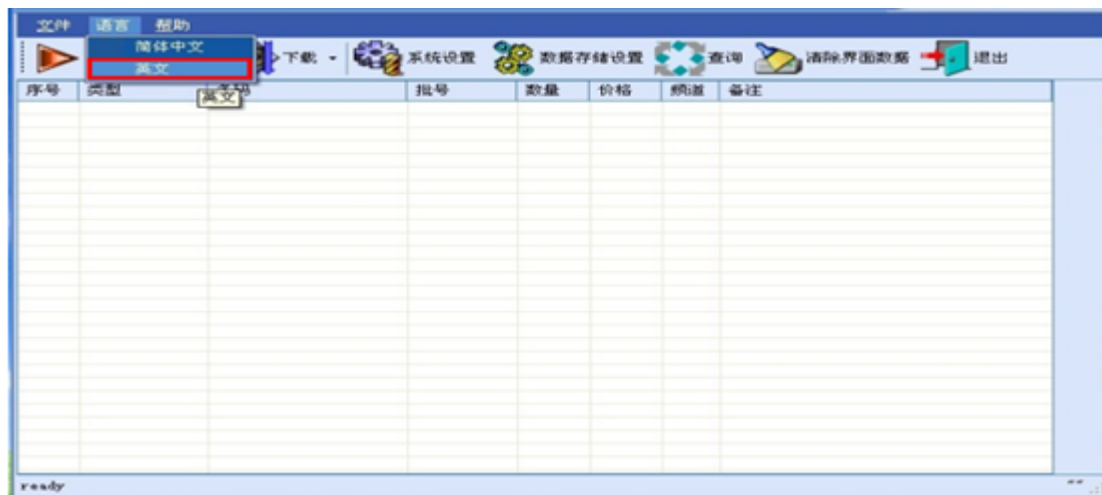


Figure 4-33

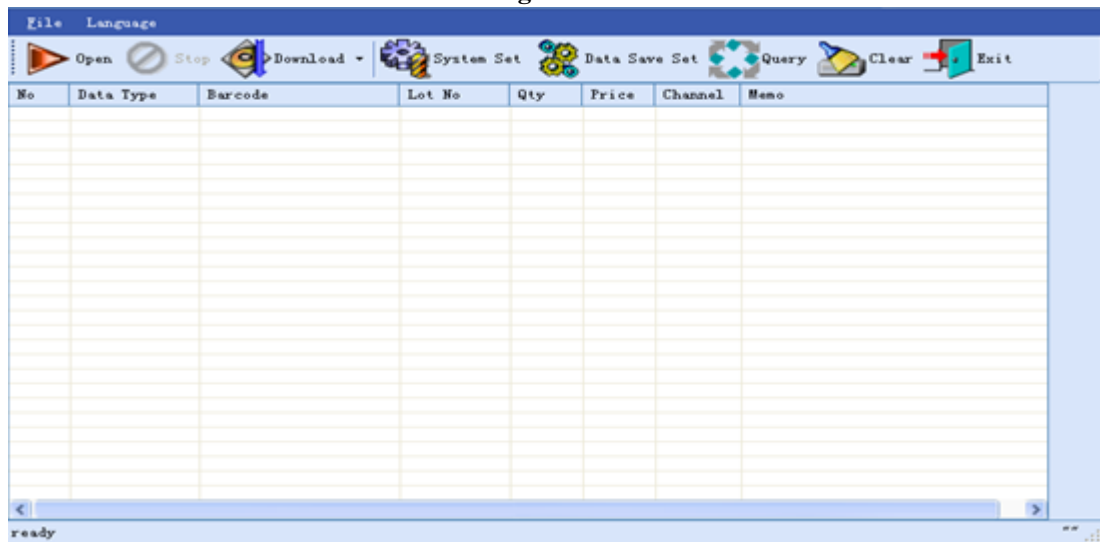


Figure 4-34

WARRANTY

OCBS-D007 Wireless Stocktaking Handheld terminal is warranted for a period of twelve(12) months from the date of purchase.

Terms & Conditions:

A. Warranty service is only available for products purchased from OCOM or its authorized dealers

B. Product may be serviced provided it remains unmodified and is operated under normal and proper conditions, while the buyer must present the original purchase invoice or receipt for verification when warranty service is rendered. No charge will be made to Buyer for replacement parts for warranty repairs.

C. The above warranty provisions shall not apply to the following cases, but repair service may be rendered at the Buyer's expense:

1. Warranty service is expired.
 2. The Buyer is incapable of presenting a warranty card or the information in the warranty card is not complete or is altered.
 3. Defects or damage cause by accident or artificial factors like unusual physical or electrical stress, water or other liquids, etc.
 4. Defects or damage results from failure to perform operator handling and scheduled maintenance instructions stating in the user's manual.
 5. Other defects or damage do not cause by workmanship or material.
- D. No repair service shall apply to the following products:
1. Products not made by OCOM.
 2. Products that has been repaired, tampered with, altered or modified, without authorization from OCOM.

Notes:

The product specification and information mentioned in this manual is subject to changes without prior notice. For the latest news and information, please visit: www.ocominc.com