

POS 终端 (M/N:POS-Z90)

规格:

5.1英寸屏幕
5.0英寸摄像头
3600mAh电池
58mm厚度
500mm重量
2G/3g/4g wifi, 蓝牙,
ic, ic
emv L1 L2 支付系统
(可选)

性能:

处理器, 内存, 存储, 网络, 接口, 其他, 兼容性

配置:

Table with 2 columns: Configuration Item and Specification. Includes sections for OS (android 5.1), Storage (ram:1gb, flash:8gb), Power (3600mAh, 3.7V), GPS (gps agps), Connectivity (usb), POS Features (ic, psam), and Network (gsm, wcdma, td-scdma, tdd-lte, wlan).

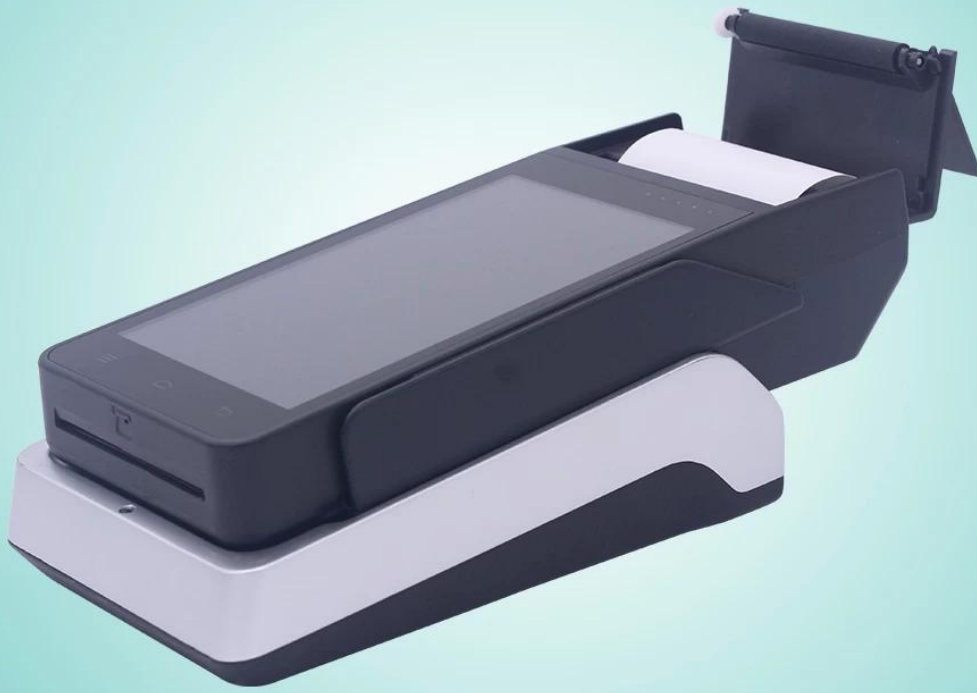
□□
□□□□ □□
□□ □□
□□

650g
-20 ° c
-40 ° c ~ 80 ° c
10% ~ 90% rh □□□

□□:



POS-Z90



www.ocominc.com





POS-Z90



www.ocominc.com

