

15.1 Windows POS

(M/N POS-1519)

OCOM 1519 POS intel Celeron intel core I CPU U IO



Intel Celeron Intel Core I3 I5

Msata SSD 64GB SSD 128GB 256GB

MSR VFD220

□□□□□□□□□□□□□□□□□□□□□□□□

□□

□□	POS-1519
□□	15.1□□□□□□ POS □□
□□	□□□□□□□□□□
□□	□□□□
□□	
□□□	15.1□□□□□□□□
□□□	1024*768
□□	250cd/□□□
□□	□□□□150□□□□140
□□□	□□□□GG□□□□
□□	15.1□□□□□□12.1□□□□□□□□□□□□□□□□
□□	2*20 VFD □□□□□□□□□□□□
□□	
□□	Intel Celeron J4125 2.0GHz □ intel core I3 / I5 CPU □□□□
□□□□	1*SO-DIMM DDR4□□□□□2400mHZ□4GB/8GB□□
□□□□	Msata SSD 64GB □□□□□□ 256GB
□□	□□ Real Tek ALC662
□□□	10/100Mbs,Realtek RTL8111F □□□□ □□Mini PCI-E□□□□□□□□WIFI□□
□□□□	Windows7/8/10, □□□,WEPOS,Linux
□□□	
□□□ I/O □□ J4125	□□□□*1,12V DC □□*1
	□□□□RJ-45*1
	USB*6
	15PIN D-sub VGA *1
	RS 232*2
	□□□□*1□□□□□□*1

MSR	MSR
	6.5Kg~8.0Kg
	425*275*405mm/440*295*425mm
	0~40
	-10~60
	10%~80%
	10%~90%
	200-240V/50-60HZ/110-240V/50-60HZ/DC12V/5A

15.1-inch Windows POS Terminal with Aluminium Alloy Base



Match with other products



Windows 11

Windows 10

Windows 8

LINUX



J1900, J4125 or i3 / i5 for option



Memory 4G or 8G



Msata SSD 64GB or higher



15.1 inch touch screen monitor



Sub-display, VFD or LCD display for option



Optional Side MSR

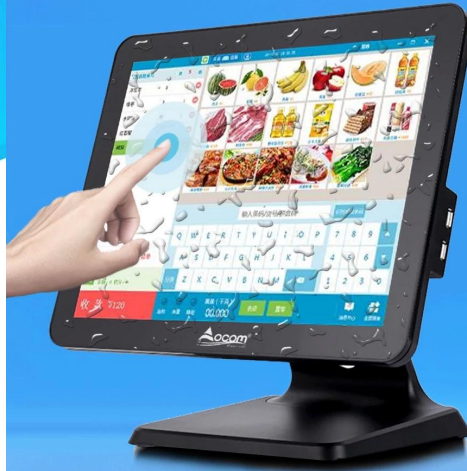
HD Capacitive Screen

15.1-inch multi-point projected capacitive touch panel with 1024*768 resolution

Waterproof

Oilproof

Dustproof Front Screen



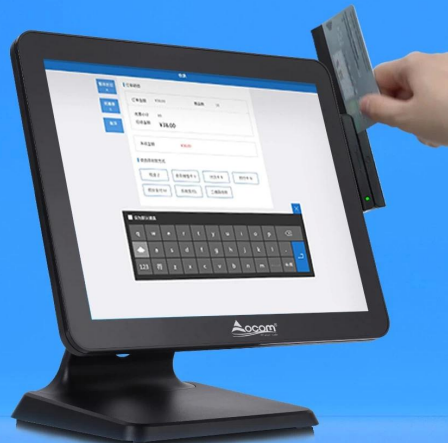
Customer display for option

Sub-display or VFD/LCD display for option



Optional Side MSR

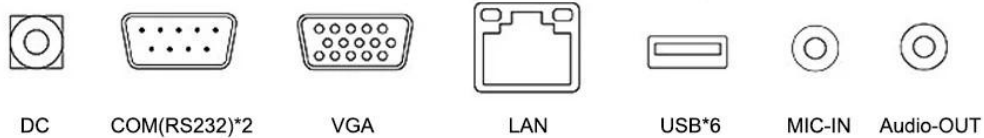
Magnetic stripe cards can be read



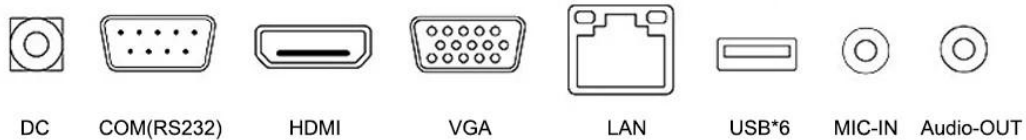
Product Interface



Windows interfaces J1900/J4125



Windows interfaces i3/i5



Screen Size



↙↗ 15.1 inches

or



↙↗ 15.1 inches

+

15.1 inches
12.1 inches
2*20 VFD
2*20 LCD

OEM/ODM

FAMOUS PARTNER BRANDS



[Click here](#)

Customized For Your Project



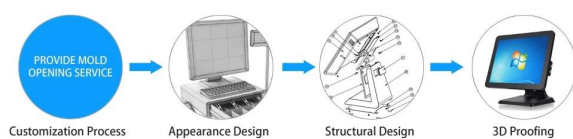
Customized Your LOGO



Customized Your Packaging



Support Customer's Idea To Do The Design



Product Details













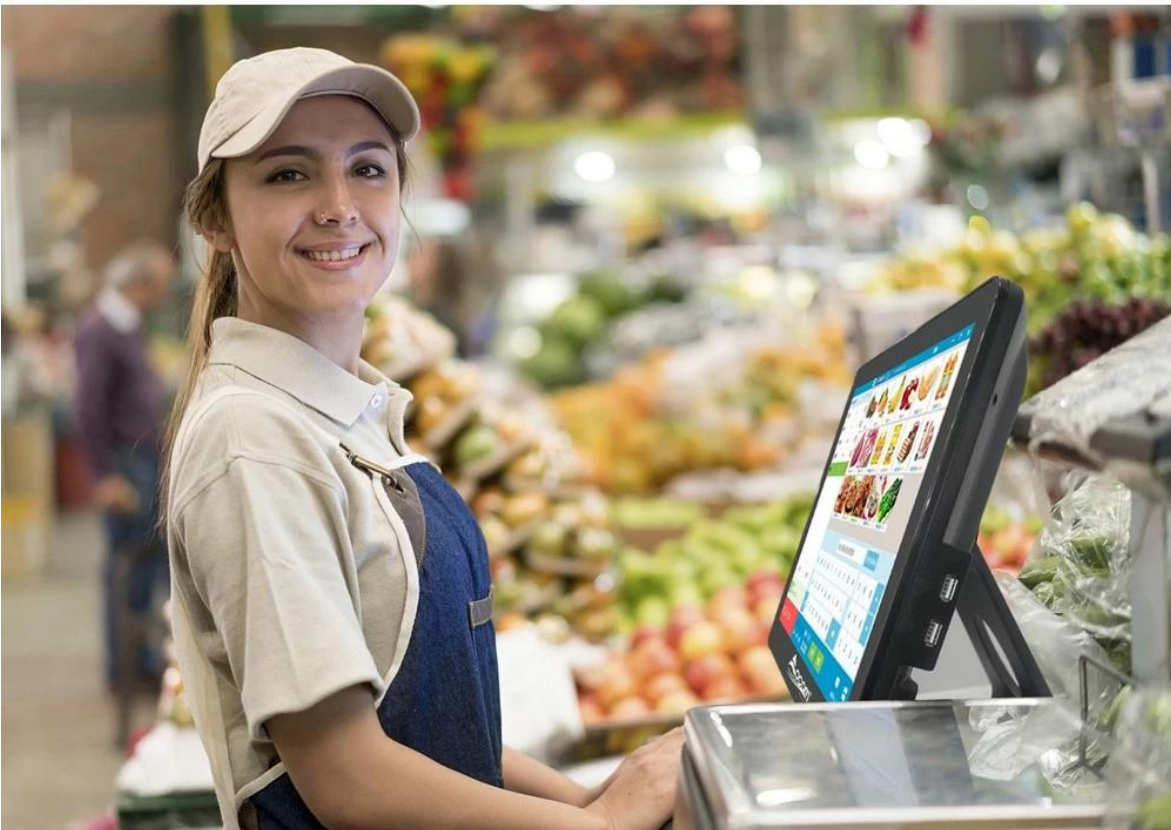






**All in one
Touch POS system**

APPLICATION



□□□□

[POS-1519□□](#)

[Win 6/7/8/10_GeminiLakeJ4125 J1900_win10 driver](#)

[J1900 Win7□□](#)