

15.6吋Windows/Android雙系統 POS 電腦

(M/N POS-1561)

OCOM POS-1561 POS 電腦採用雙系統intel 雙系統CPU雙系統 I/O雙系統雙系統

雙系統



雙系統 POS 電腦採用雙系統

雙系統雙系統雙系統

雙系統雙系統雙系統雙系統

雙“雙系統”雙系統

雙系統雙系統雙系統雙系統

雙系統雙系統雙系統雙系統雙系統

雙系統 POS 電腦採用雙系統



POS-1561-W		POS-1561-A
	15.6吋 POS	
	ABS	
	15.6吋	
	1920*1080	
	250cd/吋²	
	170mm	
	GG	
	15.6 11.6	
MSR	3	
	Intel Celeron J6412, 2.0GHz Celeron J4125, intel core i3 / i5 11th CPU	RockchipRK35682.0GRK3588
	1*SO-DIMM DDR42400mHZ4GB /8GB /16G	DDR4 4GB 8G/16G
	64GB M.2 SSD 512GB	32GB EMMC 64GB/128GB
	10/100/1000Mbs, Realtek RTL8111F Mini PCI-EWIFI	10/100/1000MbsRealtek RTL8111F LANWi-Fi 802.11b/g/nBT3.0/BT4.0
	Windows 10/11	11
	1	
	12V DC	
I/O6412	RJ-45 *1USB *8COM *2HDMI *1	
	*1	
	C	
	1	
	12V DC	
I/ORK3568	RJ-45 *1USB *6COM *1	
	RJ11TF*1SIM*1	
	*1	
	C	
	0~50	
	-20~60	
	10%~90%	
	10%~90%	
	6.07.23	
	436*400*166	
	110-240V/50-60HZDC12V/5A	
	FCC A CE LVD/CCC	

OCOM New Products

15.6 Inches Die-cast Aluminum Touch POS Terminal

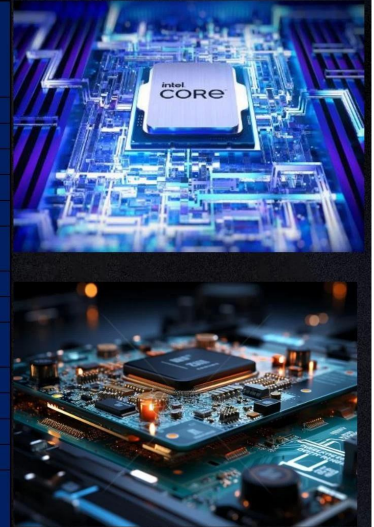


25mm Ultra-thin Body, Die-cast Aluminum Shell

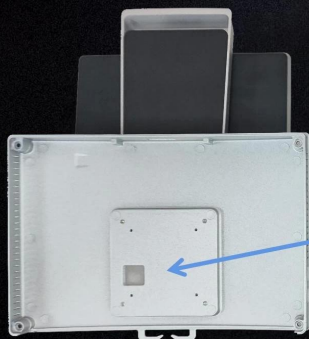


Using "Seavo" Motherboard, Equipped with Intel High-end Processor

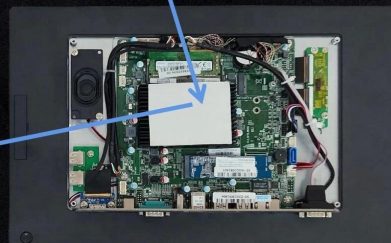
Item	Intel Celeron J4125 @ 2.00GHz	Intel Celeron J6412 @ 2.00GHz (Standard)	Intel Core i3-1115G4 @ 3.00GHz	Intel Core i5-1135G7 @ 2.40GHz
Socket Type	FCBGA1090	FCBGA1493	FCBGA1449	BGA1526
CPU Class	Desktop	Mobile/Embedded	Laptop	Laptop
Clockspeed	2.0 GHz	2.0 GHz	3.0 GHz	2.4 GHz
Turbo Speed	Up to 2.7 GHz	Up to 2.6 GHz	Up to 4.1 GHz	Up to 4.2 GHz
# of Physical Cores	4 (Threads: 4)	4 (Threads: 4)	2 (Threads: 4)	4 (Threads: 8)
Cache	L1: 224KB, L2: 4.0MB, L3: 0MB	L1: 256KB, L2: 1.5MB, L3: 4MB	L1: 160KB, L2: 2.5MB, L3: 6MB	L1: 320KB, L2: 5.0MB, L3: 8MB
TDP	10W	10W	15W	15W
Yearly Running Cost	\$1.83	\$1.83	\$2.74	\$2.74
Other	Intel UHD Graphics 600	Intel UHD Graphics for 10th Gen Intel Processors	Intel UHD Graphics for 11th Gen Intel Processors	Intel Iris Xe Graphics
First Seen on Chart	Q1 2020	Q3 2021	Q4 2020	Q3 2020
# of Samples	478	84	1416	5605
CPU Value	0	71.4	21.8	31.9
Single Thread Rating	1165	1381	2650	2693
CPU Mark	2963	3853	6118	9845



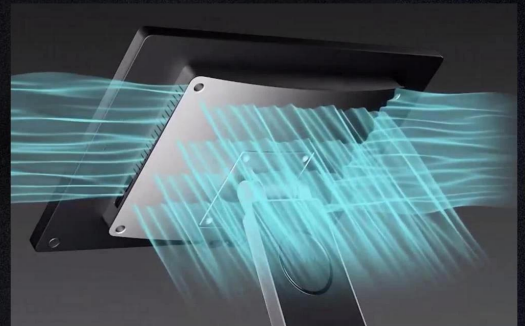
The scientific heat dissipation design allows the POS machine to have good heat dissipation performance and can still work normally even at an ambient temperature of 50 degrees Celsius.



The heat dissipation silicone grease is attached to the CPU heat sink.



And the heat dissipation silicone grease is adhered to the die-cast aluminum shell to quickly transfer heat.



More scientific layout structure makes the POS machine maintenance easier.

Tips: The mainboard of POS-1561 is installed behind the screen. When the casing is disassembled, the stand and the casing are completely separated, and the screen cables will not be damaged during disassembly.

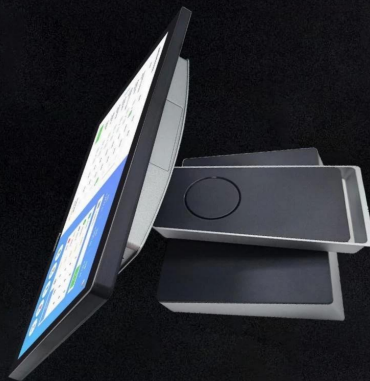


Other Model

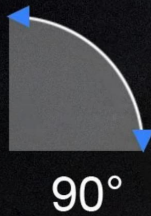


POS-1561

3 Placement Methods, Suitable for Various Counters



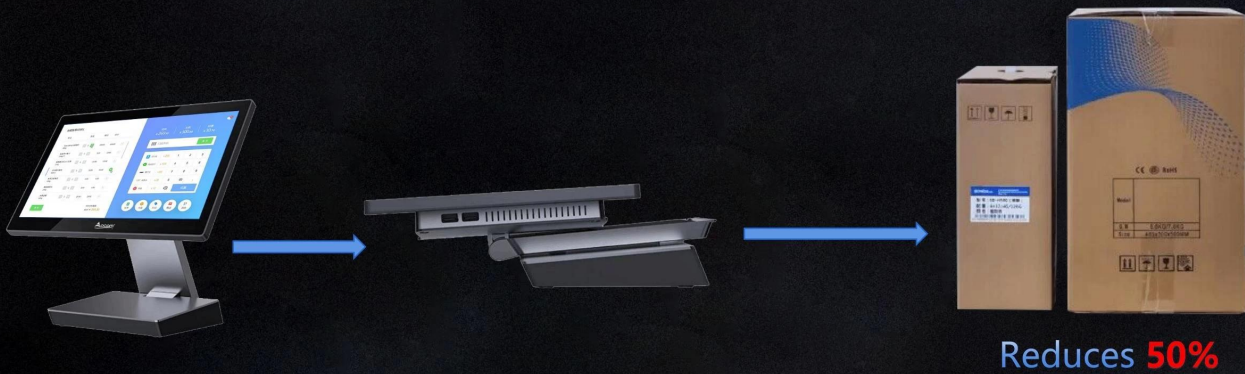
Two types of wall-mounting methods to enrich the application scenarios.



Cables management make cashier desk more tidier and save much space for use



Double Folding Shaft Reduces Packaging Volume By 50% !



Supports "One Line Communication" secondary screen, easy to assemble

Tips: One line can solves Power supply + Display Signal + Touch function at the same time



Two way to installation 2nd screen



Suitable for regular
counters



Suitable for high and
low counters



Specifications



OS

Windows 10/11
Android 11



Processor

Intel Celeron J4125/J6412
Intel core i3-1115G4
Intel core i5-1115G7
Rockchip RK3568/RK3588



Memory

DDR4 4GB/8GB/16GB



Storage device

64G/128G/256G/512G SSD(Windows)
32G/64G/128G eMMC(Android)



Main screen

15.6" LCD (1920*1080)
16:9, Multi-point projected G+G capacitive touch



Sub-display

15.6"/11.6"(POS-1561)
9.7"(POS-1518)
Touch function for option



Options

MSR



Housing material

Aluminium alloy Plus ABS
Black+Silver



Environment

Operating temperature: 0°C - 50°C
Storage temperature: -20°C - 60°C



Size (W*H*D)

Product size: 218*339*188(mm)
Packaging size: 440*165*400(mm)



Weight

Net: 5.6kg
Gross: 7.23kg



Installation

Desktop type
Wall mounting type

I/O Interface Diagram

Rich I/O interfaces, ultimate scalability

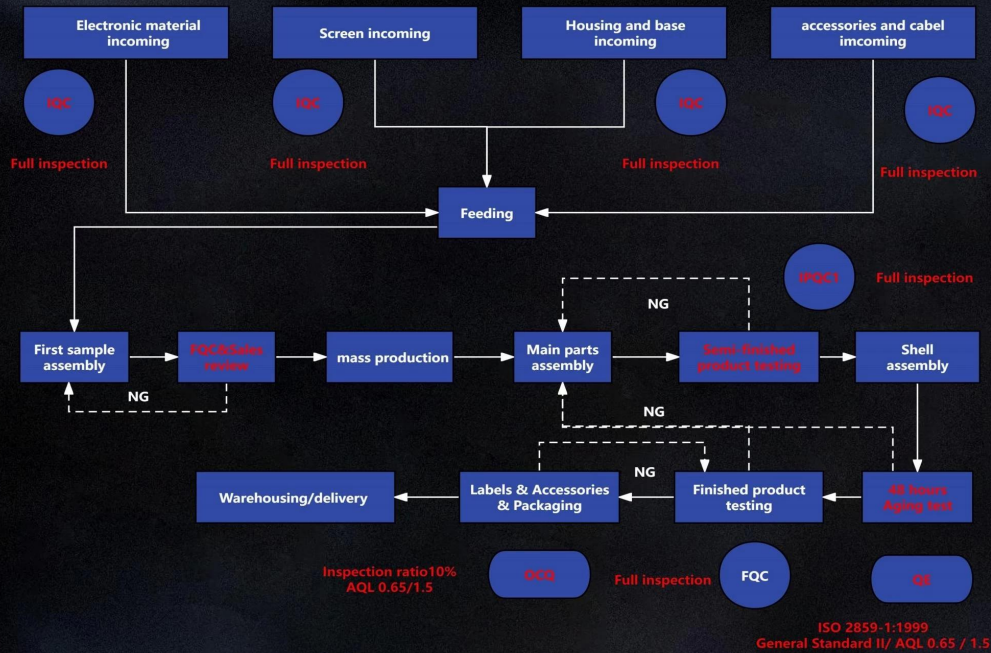


J6412
I3-1115G4
I5-1135G7
I7-1165G7

Function Options



Quality Control



Reliability Testing Equipment



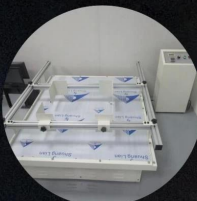
Consistant Temperature And Humidity Chamber

By adjusting the temperature in the thermostat to simulate the use environment from -10 degrees Celsius to 55 degrees Celsius, test the reliability of the POS machine in high and low temperature environments.



Electrostatic Discharge Generator

Use Electrostatic Discharge Generator to simulate tip discharge and test the POS machine's ability to protect against static electricity during air discharge and contact discharge.



Transport Vibration Testing Machine

Use the Transport Vibration Testing Machine to simulate vibrations during transportation and monitor the firmness of the connectors throughout the POS machine and the rationality of the internal structure.

Application Areas



Restaurant



Supermarket



Convenience store



Bank



Bar



Jewelry store

Warranty Terms

POS-1561: **18~36 Month**

The standard warranty period is **18 months**, with an additional price of 5% to upgrade to a **2-year** warranty. If you need longer warranty, please contact sales for details

DOA: It is consistent with the existing terms of OCOM

Accessories: 2 % of the total quantity
(Full set of accessories including motherboard, memory, hard drive, TP LCD adapter, power cord)