

## 15.6吋Windows/Android雙系統 POS 機

(M/N POS-1561)

OCOM POS-1561 POS 機採用雙系統設計，支援intel 雙系統設計，CPU 雙系統 / O 雙系統設計。

雙系統



雙系統 POS 機採用雙系統設計

雙系統設計

雙系統設計

雙系統設計

雙系統設計

雙系統設計

POS
-----

11

項目	POS-1561-W	POS-1561-A
項目	15.6吋 POS 機	
項目 項目	螢幕ABS	
項目		
項目	15.6吋	
項目	1920*1080	
項目	250cd/㎡ <sup>2</sup>	
項目	螢幕170mm*170mm	
項目	螢幕GG玻璃	
項目 項目	11.6mm*1366*768mm*1920*1080	
MSR	3mm	
項目	4W/3W*1	
項目		
項目	Intel Celeron J6412, 2.0GHz 或 Celeron J4125, intel core I3 / I5 11th CPU 雙核	Rockchip 雙核 RK3568 雙核 2.0G 雙核 RK3588 雙核
項目 項目	1*SO-DIMM DDR4 雙核 2400-3200mHZ 雙核 4GB /8GB /16GB 雙核	雙核 DDR4 4GB 雙核 8G/16G 雙核
項目 項目	64GB M.2 SSD 雙核 512GB	雙核 32GB EMMC 64GB/128GB 雙核
項目/ 項目 項目	10/100/1000Mbps, Realtek RTL8111F 雙核 雙核 Mini PCI-E 雙核 WIFI 雙核	10/100/1000Mbps 雙核 Realtek RTL8111F LAN 雙核 雙核 Wi-Fi 802.11b/g/n 雙核 BT3.0/BT4.0
項目 項目	雙核 Windows 10/11	雙核 11
項目		
項目 I/O J6412	雙核 *1	
	12V DC 雙核 *1	
	雙核 RJ-45 *1 雙核 USB *8 雙核 COM *2 雙核 HDMI *1	
	雙核 & 雙核 *1	
	雙核 C 雙核	

I/O R38	摄像头*1
	12V DC 摄像头 *1
	摄像头RJ-45 *1USB *6COM *1
	RJ11*1TF*1SIM*1
	摄像头*1摄像头*1
	摄像头摄像头 C 摄像头摄像头
颜色	
重量 g	0~50g
温度 ℃	-20~60℃
湿度 %	10%~90% 湿度
湿度 %	10%~90% 湿度
颜色	
尺寸 mm	摄像头6.0摄像头7.23mm
尺寸 mm mm	436*400*166mm
颜色	
电压 V	110-240V/50-60HZ摄像头DC12V/5A摄像头
尺寸 mm	摄像头摄像头/摄像头/摄像头
颜色	
认证	FCC A /CE /LVD/CCC

# OCOM New Products

15.6 Inches Die-cast Aluminum Touch POS Terminal



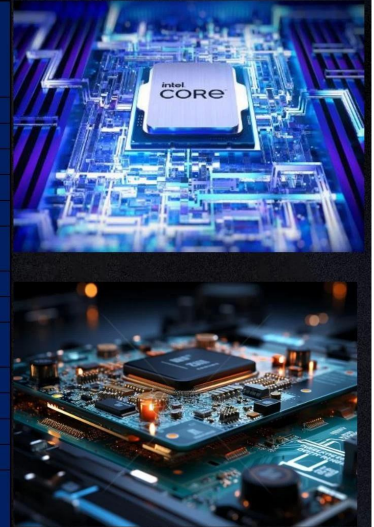
25mm Ultra-thin Body, Die-cast Aluminum Shell



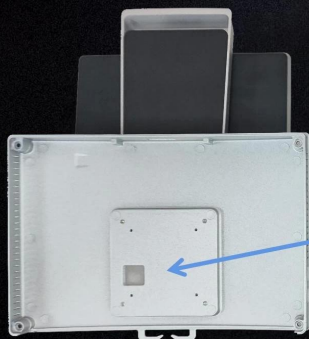


## Using "Seavo" Motherboard, Equipped with Intel High-end Processor

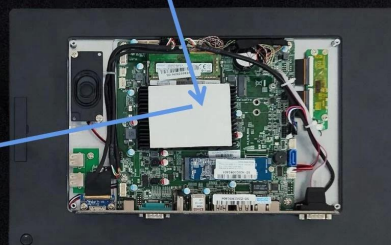
Item	Intel Celeron J4125 @ 2.00GHz	Intel Celeron J6412 @ 2.00GHz (Standard)	Intel Core i3-1115G4 @ 3.00GHz	Intel Core i5-1135G7 @ 2.40GHz
Socket Type	FCBGA1090	FCBGA1493	FCBGA1449	BGA1526
CPU Class	Desktop	Mobile/Embedded	Laptop	Laptop
Clockspeed	2.0 GHz	2.0 GHz	3.0 GHz	2.4 GHz
Turbo Speed	Up to 2.7 GHz	Up to 2.6 GHz	Up to 4.1 GHz	Up to 4.2 GHz
# of Physical Cores	4 (Threads: 4)	4 (Threads: 4)	2 (Threads: 4)	4 (Threads: 8)
Cache	L1: 224KB, L2: 4.0MB, L3: 0MB	L1: 256KB, L2: 1.5MB, L3: 4MB	L1: 160KB, L2: 2.5MB, L3: 6MB	L1: 320KB, L2: 5.0MB, L3: 8MB
TDP	10W	10W	15W	15W
Yearly Running Cost	\$1.83	\$1.83	\$2.74	\$2.74
Other	Intel UHD Graphics 600	Intel UHD Graphics for 10th Gen Intel Processors	Intel UHD Graphics for 11th Gen Intel Processors	Intel Iris Xe Graphics
First Seen on Chart	Q1 2020	Q3 2021	Q4 2020	Q3 2020
# of Samples	478	84	1416	5605
CPU Value	0	71.4	21.8	31.9
Single Thread Rating	1165	1381	2650	2693
CPU Mark	<b>2963</b>	<b>3853</b>	<b>6118</b>	<b>9845</b>



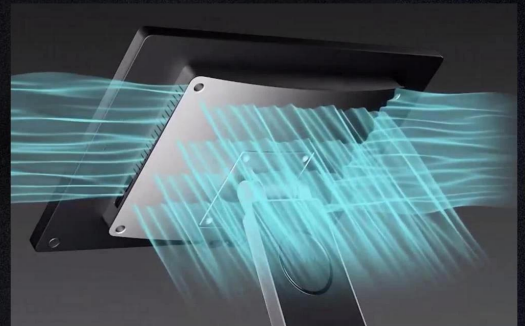
The scientific heat dissipation design allows the POS machine to have good heat dissipation performance and can still work normally even at an ambient temperature of 50 degrees Celsius.



The heat dissipation silicone grease is attached to the CPU heat sink.



And the heat dissipation silicone grease is adhered to the die-cast aluminum shell to quickly transfer heat.





## More scientific layout structure makes the POS machine maintenance easier.

Tips: The mainboard of POS-1561 is installed behind the screen. When the casing is disassembled, the stand and the casing are completely separated, and the screen cables will not be damaged during disassembly.

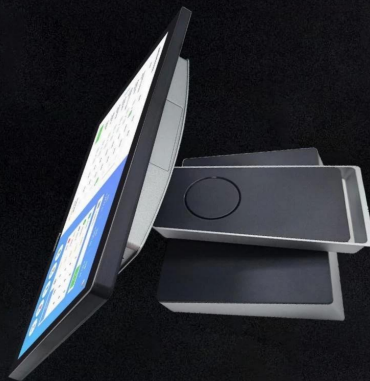


**Other Model**



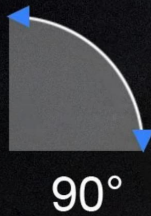
**POS-1561**

## 3 Placement Methods, Suitable for Various Counters





Two types of wall-mounting methods to enrich the application scenarios.

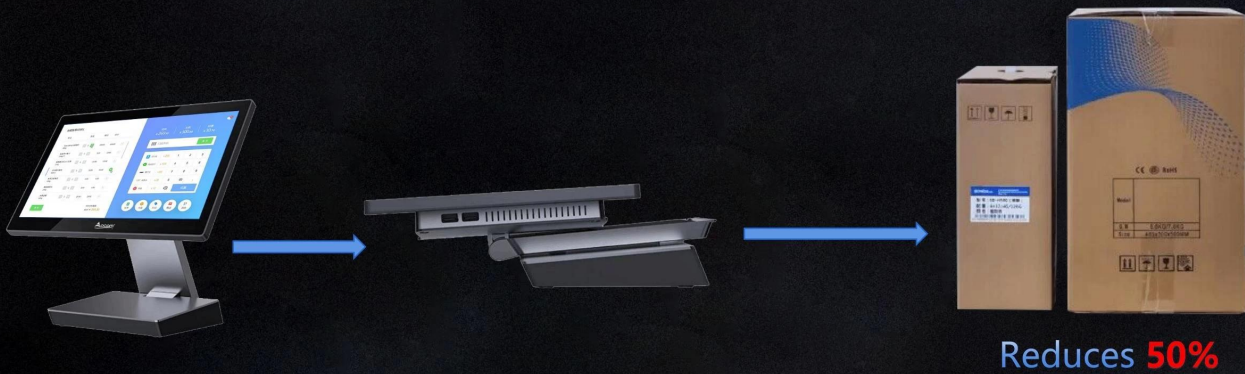


Cables management make cashier desk more tidier and save much space for use





## Double Folding Shaft Reduces Packaging Volume By 50% !



Supports "One Line Communication" secondary screen, easy to assemble

Tips: One line can solves Power supply + Display Signal + Touch function at the same time





## Two way to installation 2nd screen



Suitable for regular  
counters



Suitable for high and  
low counters



## Specifications



### OS

Windows 10/11  
Android 11



### Processor

Intel Celeron J4125/J6412  
Intel core i3-1115G4  
Intel core i5-1115G7  
Rockchip RK3568/RK3588



### Memory

DDR4 4GB/8GB/16GB



### Storage device

64G/128G/256G/512G SSD(Windows)  
32G/64G/128G eMMC(Android)



### Main screen

15.6" LCD (1920\*1080)  
16:9, Multi-point projected G+G capacitive touch



### Sub-display

15.6"/11.6"(POS-1561)  
9.7"(POS-1518)  
Touch function for option



### Options

MSR



### Housing material

Aluminium alloy Plus ABS  
Black+Silver



### Environment

Operating temperature: 0°C - 50°C  
Storage temperature: -20°C - 60°C



### Size (W\*H\*D)

Product size: 218\*339\*188(mm)  
Packaging size: 440\*165\*400(mm)



### Weight

Net: 5.6kg  
Gross: 7.23kg



### Installation

Desktop type  
Wall mounting type

## I/O Interface Diagram

Rich I/O interfaces, ultimate scalability



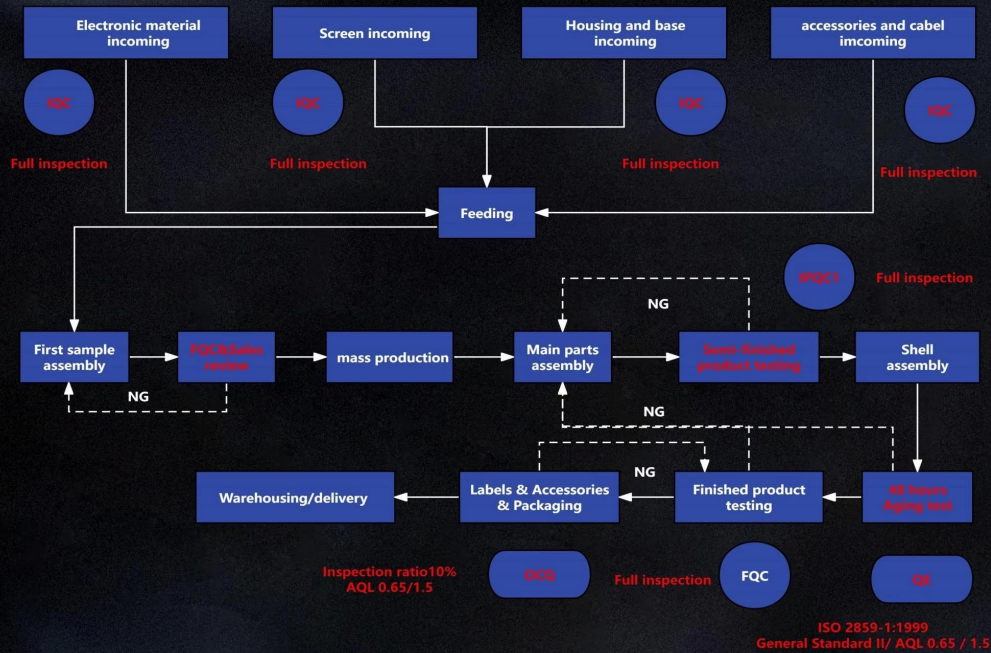
J6412  
I3-1115G4  
I5-1135G7  
I7-1165G7

## Function Options





# Quality Control



# Reliability Testing Equipment



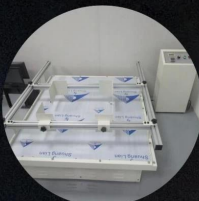
## Consistent Temperature And Humidity Chamber

By adjusting the temperature in the thermostat to simulate the use environment from -10 degrees Celsius to 55 degrees Celsius, test the reliability of the POS machine in high and low temperature environments.



## Electrostatic Discharge Generator

Use Electrostatic Discharge Generator to simulate tip discharge and test the POS machine's ability to protect against static electricity during air discharge and contact discharge.



## Transport Vibration Testing Machine

Use the Transport Vibration Testing Machine to simulate vibrations during transportation and monitor the firmness of the connectors throughout the POS machine and the rationality of the internal structure.



# Application Areas



Restaurant



Supermarket



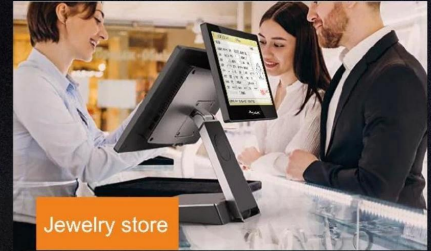
Convenience store



Bank



Bar



Jewelry store

## Warranty Terms

POS-1561: **18~36 Month**

The standard warranty period is **18 months**, with an additional price of 5% to upgrade to a **2-year** warranty. If you need longer warranty, please contact sales for details

DOA: It is consistent with the existing terms of OCOM

Accessories: 2 % of the total quantity  
(Full set of accessories including motherboard, memory, hard drive, TP LCD adapter, power cord )