

POS

POS-T2)

POS



MT6797 Tri-Cluste-A72*2A53*8 2.3GHz

58mm

3GB 16G ROM

2*SIM

USB type-C

6400mAh

□□□□□□□□□□□□□□□□□□□□

□□□□□

□□	POS-T2
□□	5.5□□□□□□□□ □□□□□□
□□	3.8□/6400□□□
□□□□□	□□□100-240V, 50/60Hz,1.5A □□□5V DC /2A
□□□□□	USB C□
□□	
□□□	5.5□□□□□□□□
□□□	1280*720
□□	
□□□□□	□□MT6797 Tri-Cluste-A72*2A53*8 2.3GHz□□□
RAM	3GB
□□	16GB □□
□□	2G/3G/4G
□□□□	□□8.0
□□	□□□□□□□□□□□□
□□	□□4.0
□□□□	□□□□ 802.11 b.g.n.ac
□□□	58mm □□□□□□□□
□□	□□□58mm□□□□≤40mm
□□□	□□□□□□ □□□□□□□□□□
NFC	□□ISO/IEC 14443A&B□Mifare□felica□
SIM□□	□□*2
□□□	□□□□□□□
□□	□□□□□□□

GPS □ AGPS	□□GPSAGPS
□□□□□	□□
□□□□	□□
□□	USB C□*1
	□□□□□*1
	□□□□*1
□□	
□□□□	0 □ 40 □□□
□□□□	-10 □ 60 □□□
□□□□	10%~80%
□□□□	10%~90%

Smart Handheld

5.5 full touch screen / High Speed / Large paper bin

4G Handheld



DDINTING

Thermal / Label Printing



Speed printing: 80mm/s



Paper width: 58mm

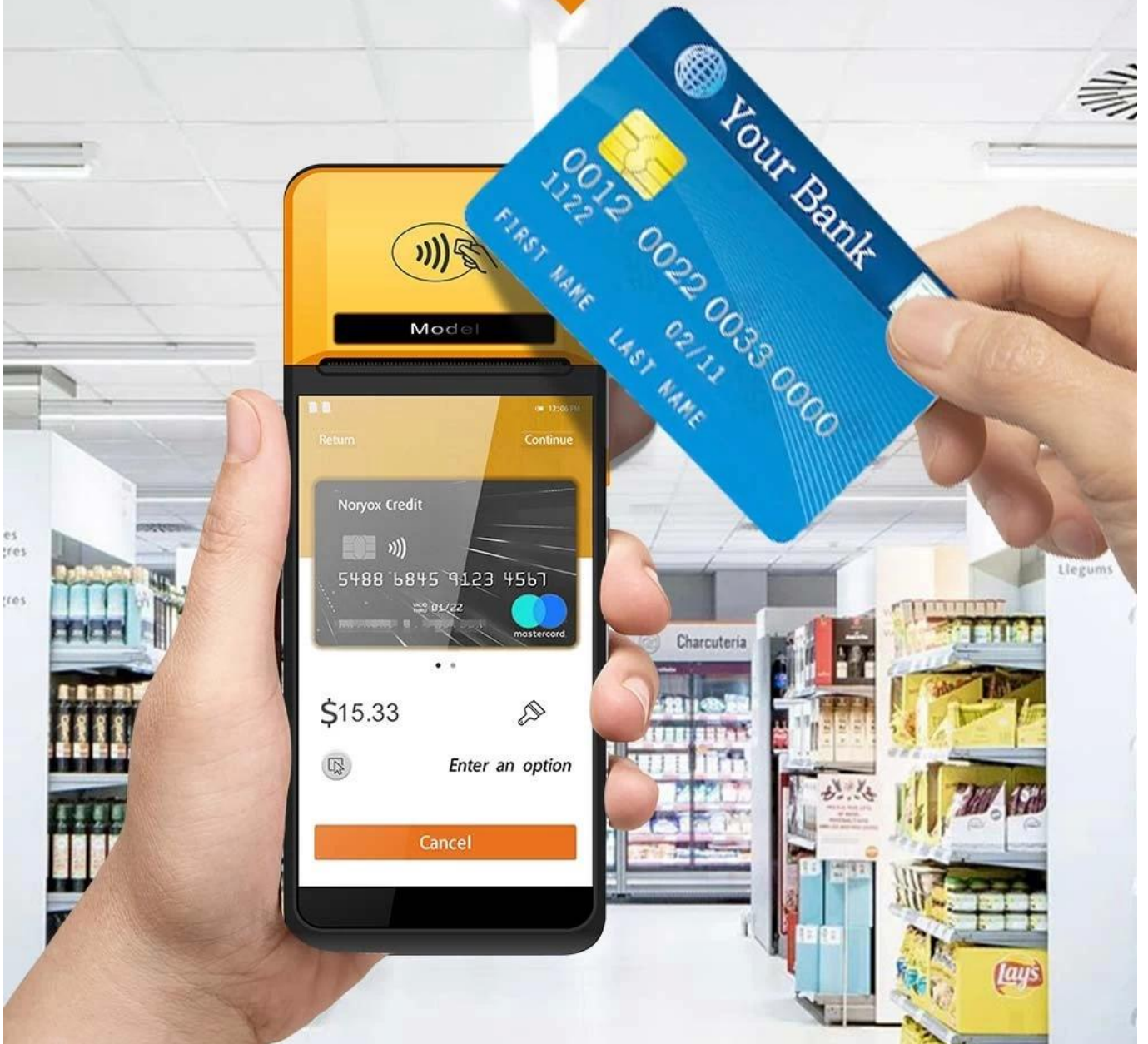
One-click Scan

Environmental Camera + Infrared Scanning Head



NFC Contactless Card

NFC contactless card reader payment function



Quickly Identify QR Codes

5MP Autofocus Camera



Fingerprint Security

Ministry of Public Security or FBI fingerprints (Optional)



BATTEDV Large Removable Battery



3.8V / 6400mAh



Built-in MDM

Product built-in MDM control system



Product Details



Applicable Scene

Powerful functions such as mobile cashier, receipt printing, pin storage, queuing, billing, label printing, QR code collection, NFC membership management, infrared physical temperature measurement, etc.



Supermarket Cashier



Catering



Convenience Store



Clothing Store



Purchase and Sale



Parking System



Temperature Measurement



Queuing Up

