

# POS

POS-T2)



MT6797 Tri-Cluste-A72\*2A53\*8 2.3GHz

58mm

3GB 16G ROM

2\*SIM

USB type-C

6400mAh

□□□□□□□□□□□□□□□□□□□□

□□□□□

□□	POS-T2
□□	5.5□□□□□□□□ □□□□□□
□□	3.8□/6400□□□
□□□□□	□□□100-240V, 50/60Hz,1.5A □□□5V DC /2A
□□□□□	USB C□
□□	
□□□	5.5□□□□□□□□
□□□	1280*720
□□	
□□□□□	□□MT6797 Tri-Cluste-A72*2A53*8 2.3GHz□□□
RAM	3GB
□□	16GB □□
□□	2G/3G/4G
□□□□	□□8.0
□□	□□□□□□□□□□□□
□□	□□4.0
□□□□	□□□□ 802.11 b.g.n.ac
□□□	58mm □□□□□□□□
□□	□□□58mm□□□□≤40mm
□□□	□□□□□□ □□□□□□□□□□
NFC	□□ISO/IEC 14443A&B□Mifare□felica□
SIM□□	□□*2
□□□	□□□□□□□
□□	□□□□□□□

GPS □ AGPS	□□GPSAGPS
□□□□□	□□
□□□□	□□
□□	USB C□*1
	□□□□□*1
	□□□□*1
□□	
□□□□	0 □ 40 □□□
□□□□	-10 □ 60 □□□
□□□□	10%~80%
□□□□	10%~90%

# Smart Handheld

5.5 full touch screen / High Speed / Large paper bin

4G Handheld



DDINTING

# Thermal / Label Printing



Speed printing: 80mm/s



Paper width: 58mm

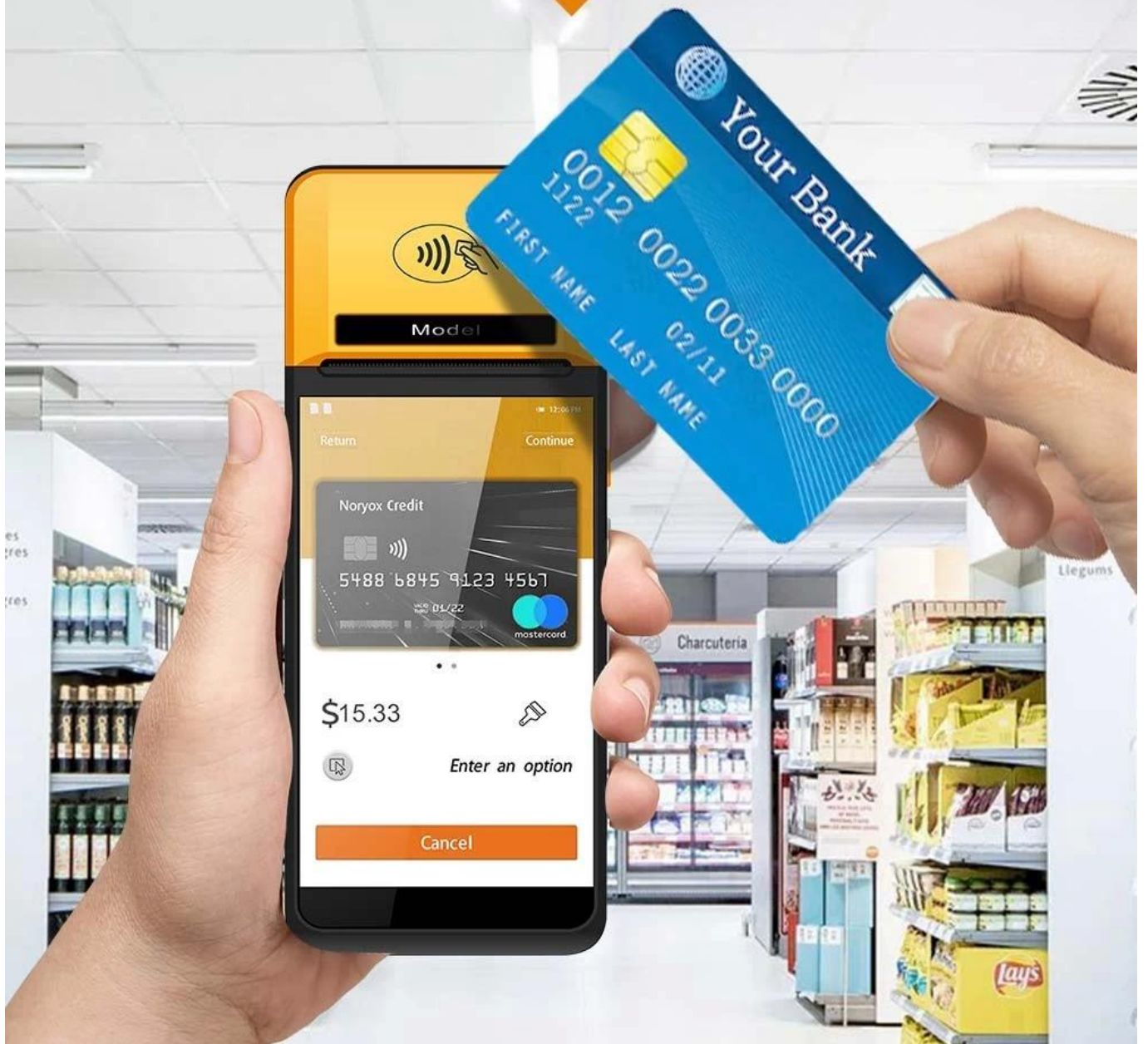
# One-click Scan

Environmental Camera + Infrared Scanning Head



# NFC Contactless Card

NFC contactless card reader payment function



# Quickly Identify QR Codes

5MP Autofocus Camera





# Fingerprint Security

Ministry of Public Security or FBI fingerprints (Optional)



BATTEDV

# Large Removable Battery



3.8V / 6400mAh



# Built-in MDM

Product built-in MDM control system



# Product Details



# Applicable Scene

Powerful functions such as mobile cashier, receipt printing, pin storage, queuing, billing, label printing, QR code collection, NFC membership management, infrared physical temperature measurement, etc.



