

# POS-T2 NFC pos 4G 58

POS-T2)

□□□



□□MT6797 Tri-Cluste-A72\*2A53\*8 2.3GHz□□□□  
 □□□□58mm□□□□□□□□□□□□□□  
 □□3GB RAM 16G ROM□  
 □□□□□□□□  
 □□NFC□□□□  
 2\*SIM□□□□  
 □□USB type-C□□□□  
 □□□□6400mAh□□□□□□□□□□□□  
 □□□□□□□□□□□□□□□□□□□□□□□□

□□□□□

□□	POS-T2
□□	5.5□□□□□□□□□□ □□□□□□□□
□□	3.8□/6400□□□□
□□□□□□	□□□□100-240V, 50/60Hz,1.5A □□□□5V DC /2A
□□□□□□	USB type C
□□	
□□□□	5.5□□□□□□□□□□

□□□	1280*720
□□□	
□□□□□	□□MT6797 Tri-Cluste-A72*2A53*8 2.3GHz□□□
RAM	3GB
ROM	16GB □□
□□	2G/3G/4G
□□□□	□□8.0
□□	□□□□□□□□□□
□□	□□4.0
WIFI	□□□□ 802.11 b.g.n.ac
□□□	58mm □□□□□□□
□□	□□□58mm□□□□≤40mm
□□□	□□□□□ □□□□□□□□□□
NFC	□□ISO/IEC 14443A&B□Mifare□felica□
SIM□□	SIM*2
□□□	□□□□□□
□□	□□□□□□
GPS □ AGPS	□□GPS□AGPS
□□□□□	□□
□□□□	□□
	USB type C*1
□□	□□□□□*1
	□□□□□*1

□□	
□□□□	0 □ 40 □□□
□□□□	-10 □ 60 □□□
□□□□	10%~80%
□□□□	10%~90%

# Smart Handheld

5.5 full touch screen / High Speed / Large paper bin

4G Handheld



DDINTING

# Thermal / Label Printing



Speed printing:80mm/s



Paper width:58m

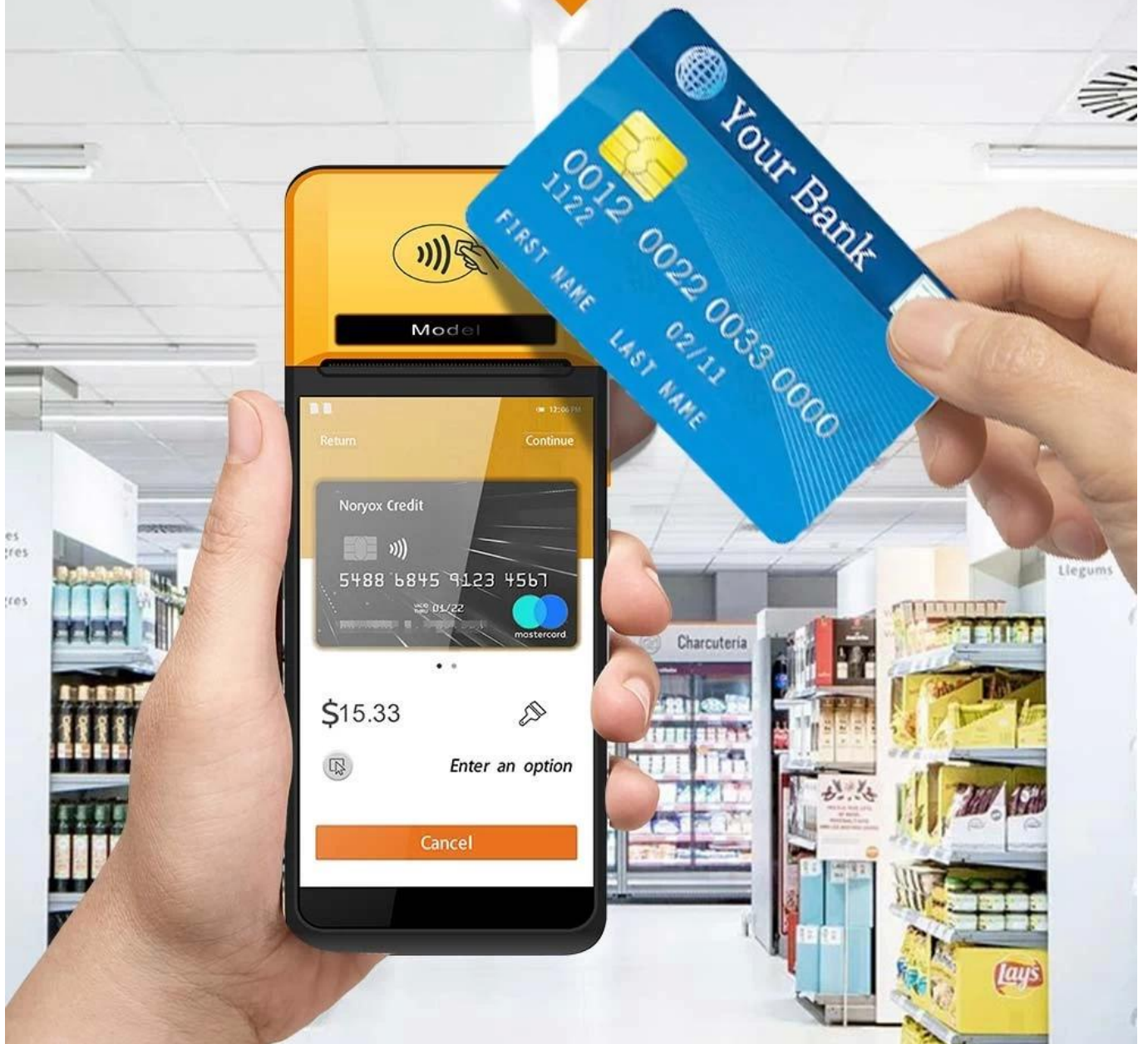
# One-click Scan

Environmental Camera + Infrared Scanning Head



# NFC Contactless Card

NFC contactless card reader payment function



# Quickly Identify QR Codes

5MP Autofocus Camera



# Fingerprint Security

Ministry of Public Security or FBI fingerprints (Optional)





# BATTEDV Large Removable Battery



3.8V / 6400mAh



# Built-in MDM

Product built-in MDM control system



# Product Details



# Applicable Scene

Powerful functions such as mobile cashier, receipt printing, pin storage, queuing, billing, label printing, QR code collection, NFC membership management, infrared physical temperature measurement, etc.



