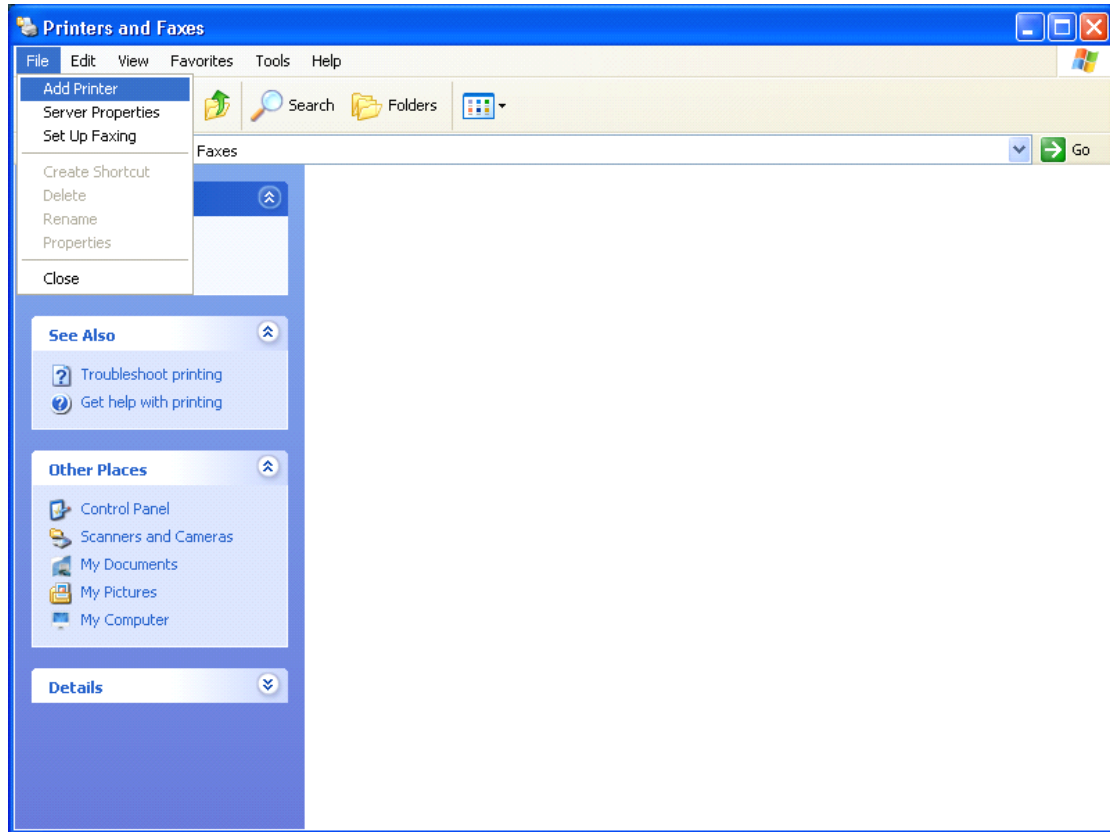


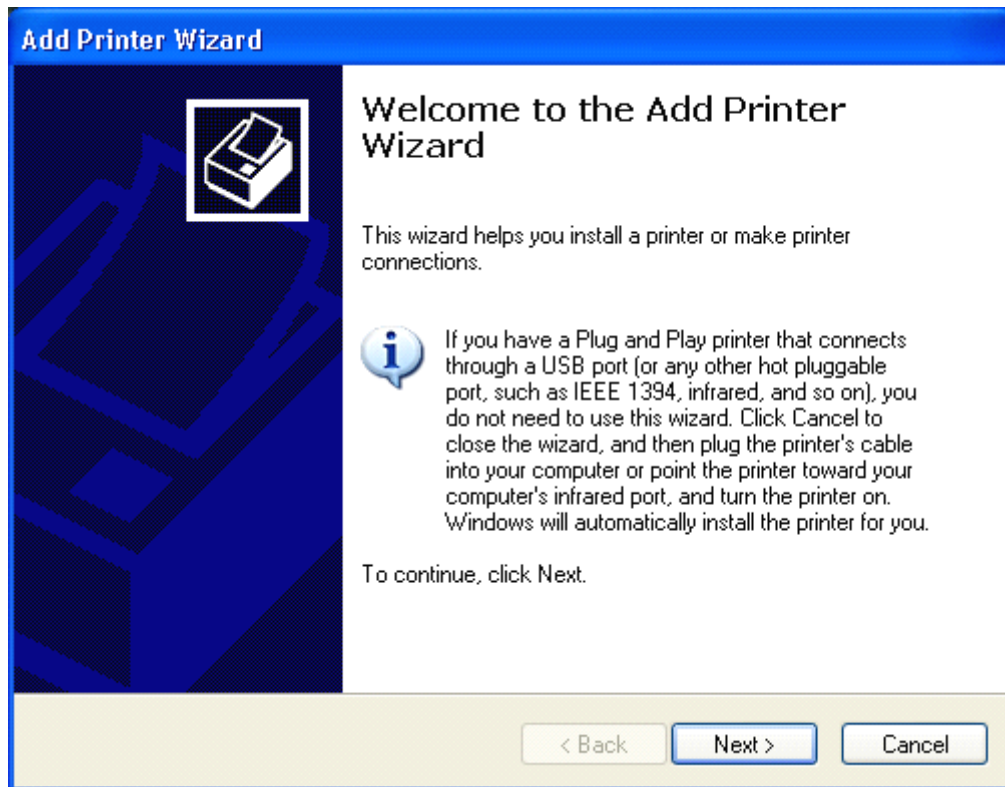
Notes:

After finished the drive version 6.33, service are forbidden by some systems, cause the printer driver installation is complete, which is not in the Printers and Faxes icon of the printer you just installed, the solutions are as follows:

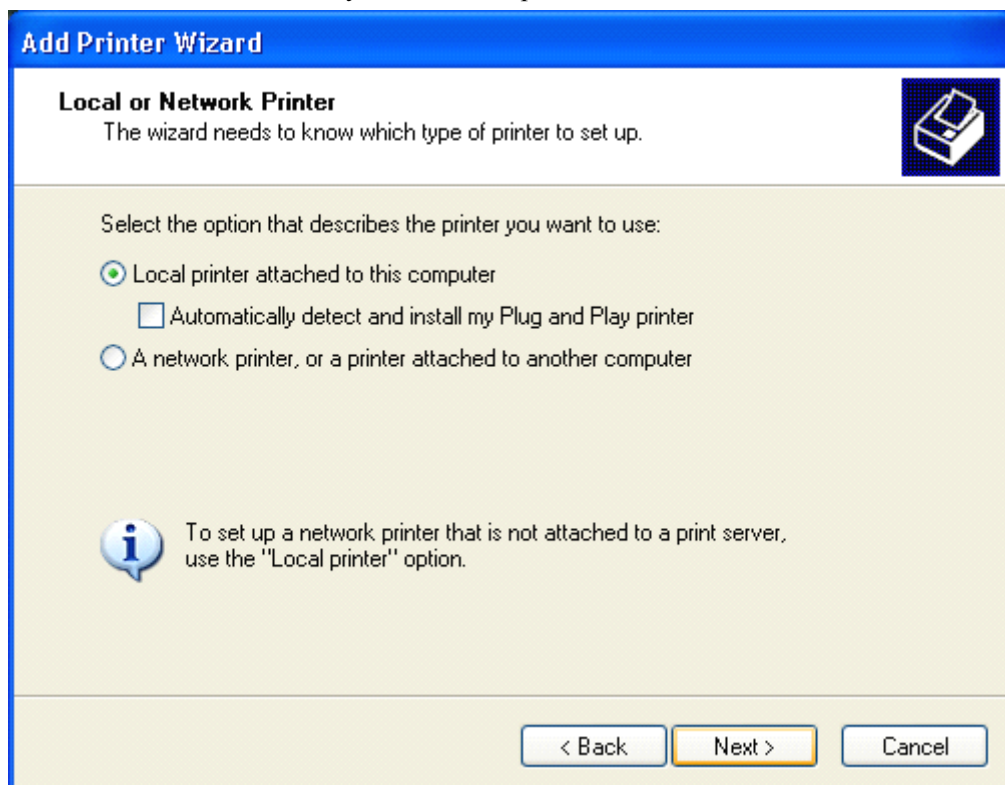
1. Enter into the control panel of the printer and fax, click to add the printer as below:



2 .Enter the next step



3. Cancel self-test automatically, click next step



4. use the default port installation, click next

### Add Printer Wizard


#### Select a Printer Port

Computers communicate with printers through ports.

Select the port you want your printer to use. If the port is not listed, you can create a new port.

☒ Use the following port: **LPT1: (Recommended Printer Port)**

Note: Most computers use the LPT1: port to communicate with a local printer. The connector for this port should look something like this:



☐ Create a new port:  
Type of port: **Local Port**

< Back   Next >   Cancel

5. Select the Have Disk

### Add Printer Wizard

#### Install Printer Software

The manufacturer and model determine which printer software to use.

Select the manufacturer and model of your printer. If your printer came with an installation disk, click Have Disk. If your printer is not listed, consult your printer documentation for compatible printer software.

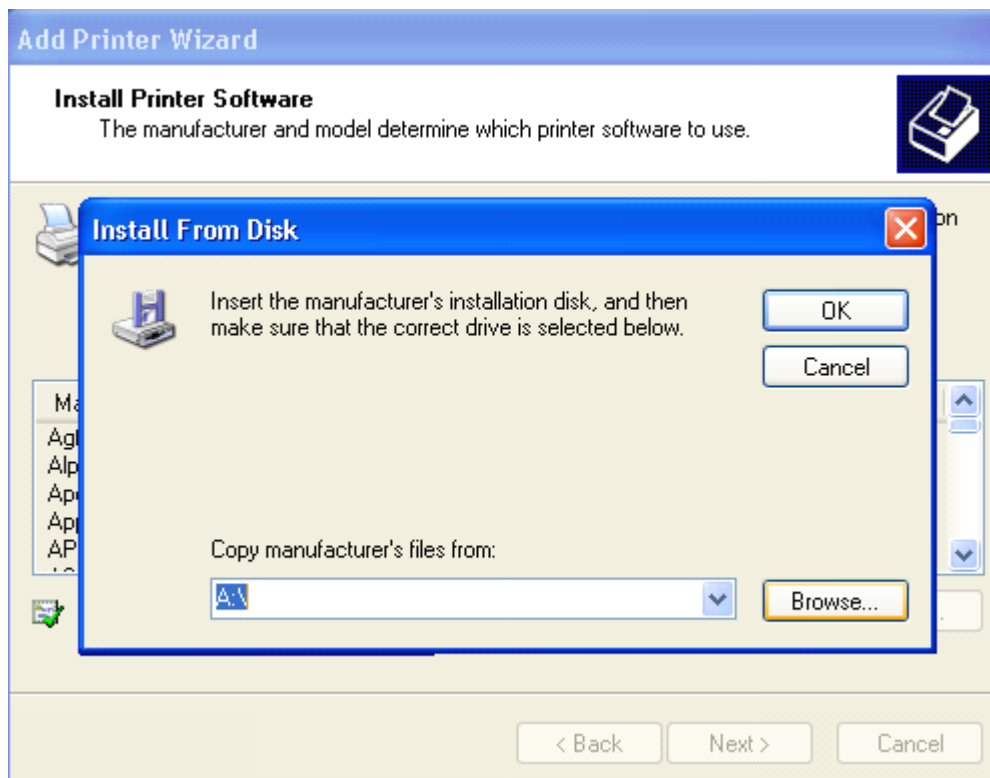
Manufacturer	Printers
Agfa	AGFA-AccuSet v52.3
Alps	AGFA-AccuSetSF v52.3
Apollo	AGFA-AccuSet 800
Apple	AGFA-AccuSet 800SF v52.3
APS-PS	AGFA-AccuSet 800SF v52.3

This driver is digitally signed.  
[Tell me why driver signing is important](#)

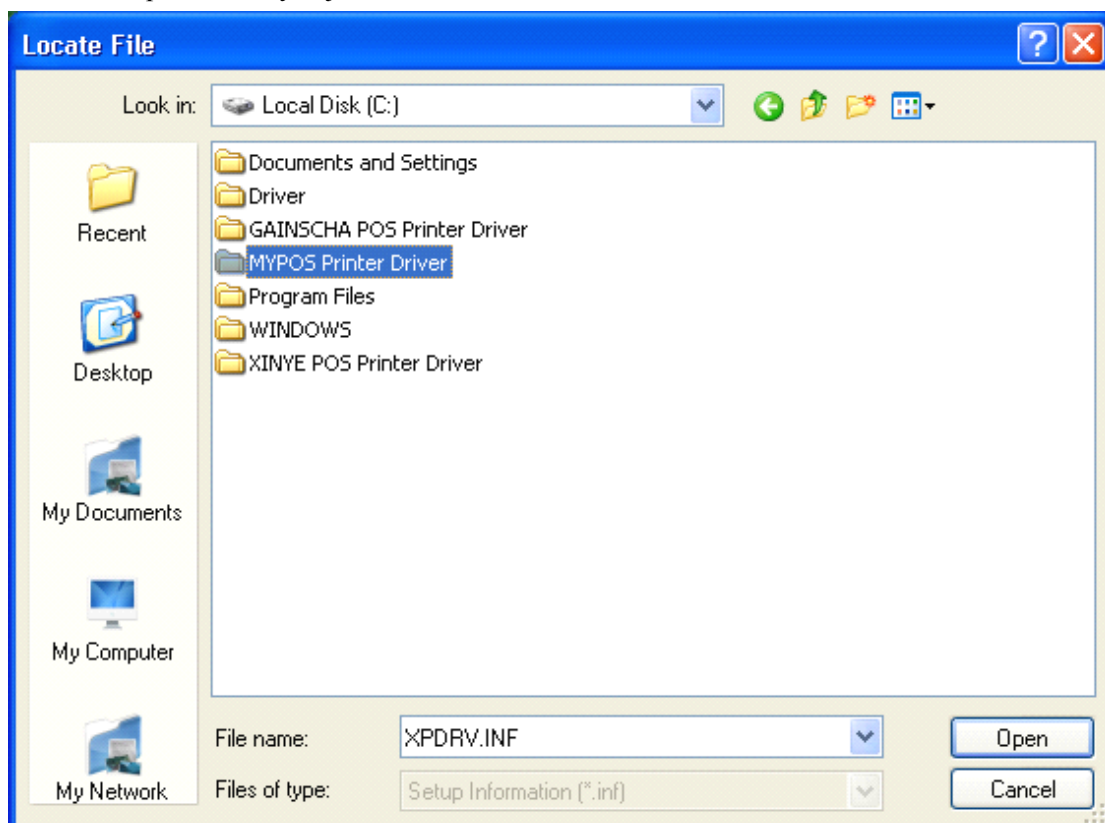
Have Disk...

< Back   Next >   Cancel

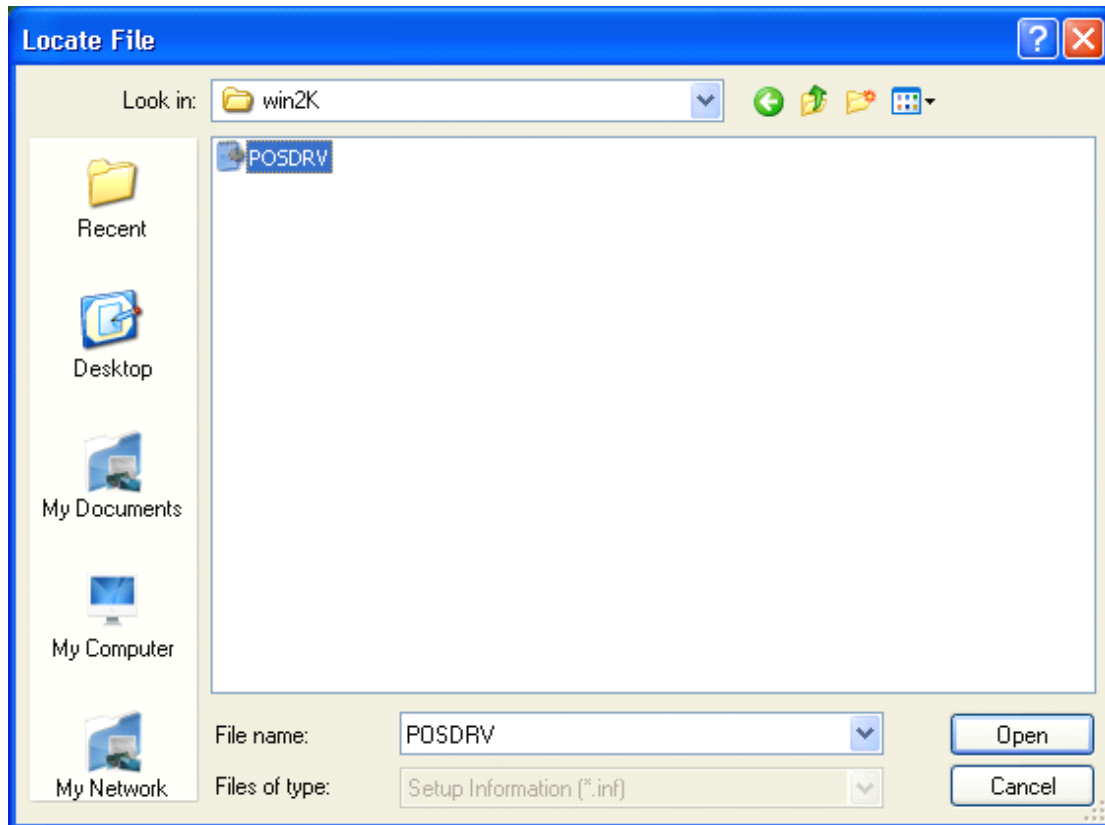
6. Browse to the C drive, find the file you just installed



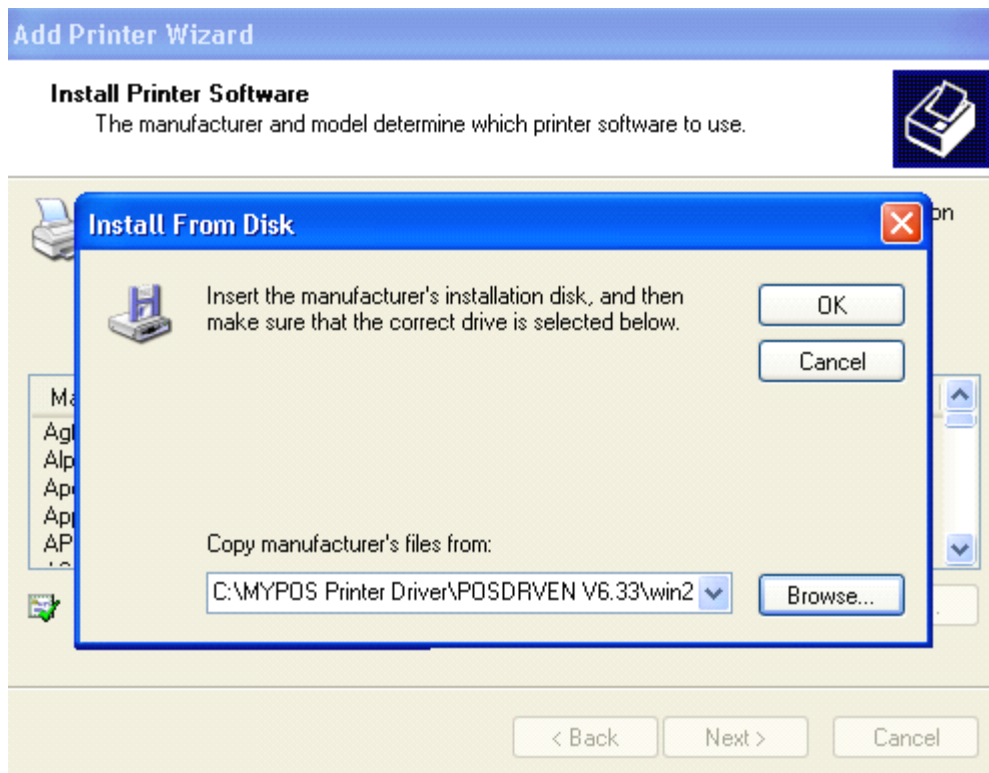
7. Click to open the file you just install



8. Click to open



9. Click ok



10. Select your printer model and click next

Notes:

POS-58 no cutter

POS-58C cutter

POS-80 no cutter

POS-80C cutter

POS-90 no cutter(90mm/s)

POS-76 no cutter

POS-76C cutter

11 Select the default printer, click next

12 Not choosetosharethepriinterandclicknext

13 DoyouwanttoprinttestpageselectNO,clicknext

14 Clickfinish

15 Thiscanbesuccessfullyinstalled,asfollows