

Elektronische Kassenschublade 5B8C oder 6B4C

(Modell Nr.: ECD-420-X)

Merkmale:

Die Schale besteht aus SECC und SPCC;
Strukturierte Hybrid-Pulverbeschichtung;
Kompatibel mit 12 V -24 V Weitspannung;
3-Positionen-Schlösser;
Ein Scheckschlitz;
5B8C oder 6B4C für optional;
Mikroschalter Sensor für optional;
Unterer Auslass, um den Schreibtisch aufgeräumter zu machen;
Steckbarer Draht für einfache Wartung.

Spezifikationen:

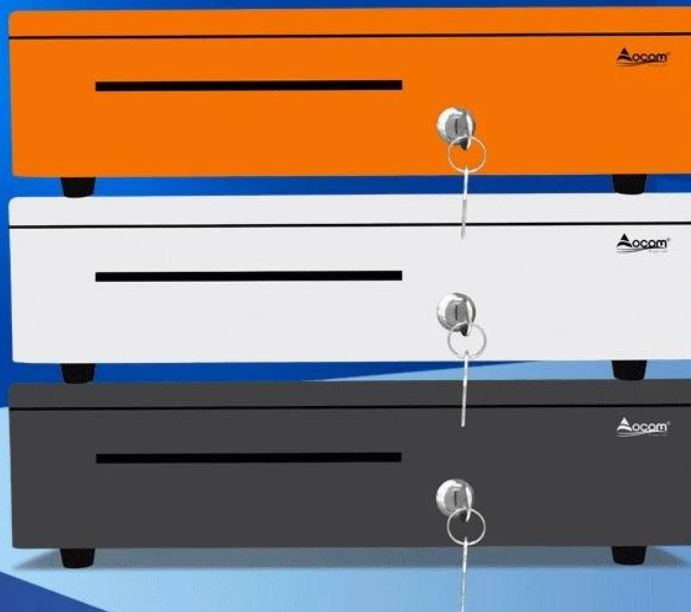
Materialien	Die obere Abdeckung verwendet 0,8 mm SPCC, die untere Abdeckung verwendet 1,0 mm SECC	
Rechnungsfach	5bill oder 6bill (5B8C Standard, 6B4C für optional)	
Breite	80/73/73/73/68mm	
Münzfach	8Münze oder 4Münze	
Sperrschalter	3 Positionsschlösser (Gesperrt&kann ausgelöst&geöffnet werden)	
Leistung	12V- 24V Weitspannung	
Slot	Einzelner Scheckschlitz	
Lebensdauer	Getestet auf mindestens eine Million Zyklen	
Schnittstelle	RJ11 oder RJ12 (RJ12 für Mikroschalter Sensorfunktion)	
Farbe	Schwarz oder weiß	
Gewicht	4,5 kg (netto), 5,2 kg (brutto)	
Maße	405 (T) x 420 (B) x 100 mm (H) (mit Füßen von 10 mm)	
Box-Abmessungen	480 (B) x 465 (T) x 160 (H)	

Cash Drawer Factory

Electronic Metal Cash Drawer

15 Years Experience

OEM/ODM



5 or 6 Adjustable
Bill Holders



8 or 4 Removable
Coins Holders



Smooth Guide



Scratch Resistant Texture
Powder Coat

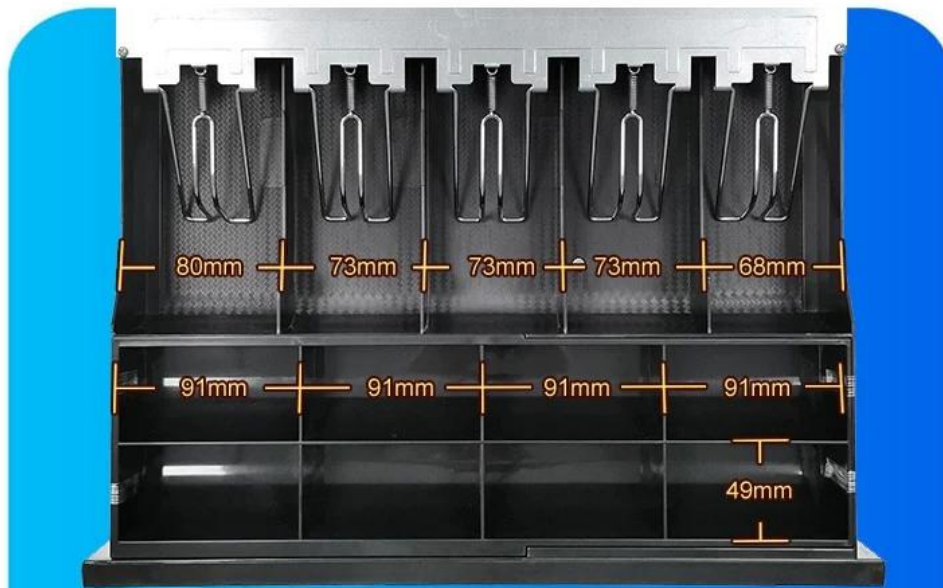


A Media Slot



3-position Locks

Details Show



USD



EUR



GBP

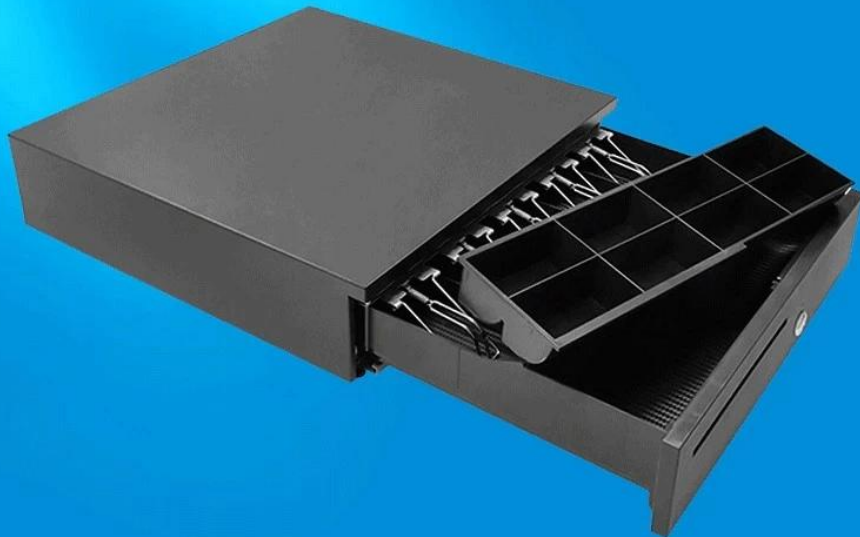


RMB

5 or 6 adjustable Bill holders and 8 or 4 removable Coins holders to suit different currencies such as Euro, US dollar, British pound, RMB, ect.

Removable Coins Tray

The cash drawer has a removable coin tray. The removable coin tray can be taken out separately for easy counting.



A media slot on the front panel for quick storage of large bill, checks, receipts and cards without opening drawer.

Over 1 Million Lifecycles

Tested to over 1 million opening/closing cycles, ensure smooth opening and closing.



Secured With 3-Position Key Lock

Manual open, Electrically open, Locked



Multiple Operation Method

Method 1

The cash drawer is used independently, turn the key, and the drawer will automatically pop open. Push the drawer to close automatically.



Method 2

Connect to a receipt printer to use. When the cashier prints the receipt, the cash box can be automatically opened.

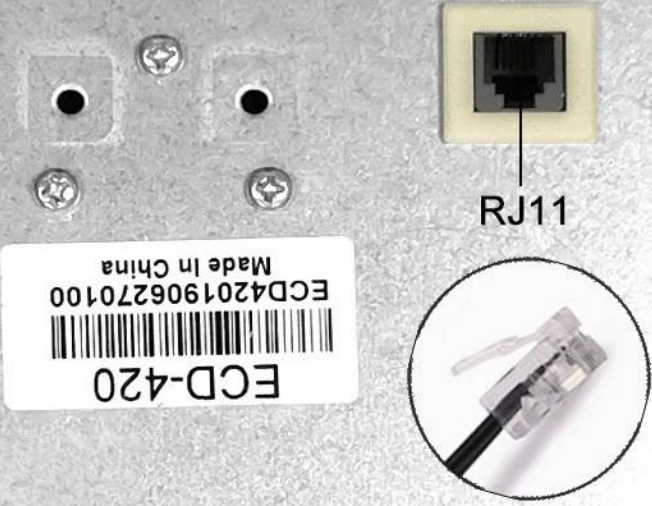


Method 3

Connect to computer to use. Need to buy a USB Trigger, set the relevant driver ports and hotkeys.



A removable cable interface at the bottom make it easy to replace the cable without disassembling the bottom plate.



Strong Construction Design

The load-bearing capacity exceeds 60KG. Cash drawer can bear heavy weight without any deformation even after long-term use.



CUSTOM PROJECT

A blue rectangular area containing a central image of a black cash drawer. To the left, a rainbow-colored circle is next to the text 'Custom Colors'. To the right, there is a small image of a multi-colored cash drawer. Below the central cash drawer, there is a small image of a cardboard box labeled 'CASH DRAWER' and the text 'Custom Packaging'. To the right of the central cash drawer, there is a logo for 'Acom' with the tagline 'All your safe' and the text 'Silk Printing Brand Design/LOGO'. Lines connect the text labels to the corresponding parts of the cash drawer or packaging.

Just provide your country or demand,
and we will introduce you the product model that suits you

Application



Bar



Restaurant



Coffee Store



Mile Tea Store



Bakery



Convenience Store



Library



Supermarket

FACTORY STRENGTH

Raw Materials And Semi-FG Products



Production Processing Equipment



FG Warehouse



Deliver The Shipment



