

HÄndlich Android POS Terminal mit Thermisch Etikett und Quittung Drucker

(M/N:POS -T2)

Merkmale:

1. **Deca-Kern** MT6797 Tri-Cluste-A72*2A53*8 2,3 GHz Prozessor
2. Eingebaute 58-mm-Hochgeschwindigkeits-Thermik **Quittung und Etikett** Drucker
3. Standard **3 GB Arbeitsspeicher** 16G ROM
4. Eingebauter großvolumiger Lautsprecher
5. Eingebautes NFC-Modul
6. **2 * SIM-Karte** Kartenschlitz
7. Unterstützt USB Typ-C **schnelles Aufladen**
8. **Herausnehmbare 6400 mAh** grosse Kapazität **reines Kobalt** Batterie
9. 1D- und 2D-Barcodeleser und Fingerdrucker für Optionen

Spezifikation

Modell	- T2
Name	5,5 Zoll kapazitiven Touchscreen, unterstützt die elektronische Signatur
Batterie	3.8 V / 64 00 mAh
Netzteil	Eingang□100-240 V , 50/60Hz ,1,5A Ausgang□ 5 V Gleichstrom /2 A
Ladeschnittstelle	USB-Typ C
Hauptbildschirm	5,5-Zoll-HD-Touchscreen Anzeige
Auflösung	720*1280IPS
Leistung	
Zentralprozessor	Deca-Core MT6797 Tri-Cluste-A72*2A53*8 2,3 GHz Prozessor
RAM	3 GB
Blinken	16 GB Flash
Kommunikation	2G/3G/ 4G
Betriebssystem	Android 8.0
Taste	Power-Taste, Scan-Taste ,Lautstärkeregler
Bluetooth	Bluetooth 4.0
W-LAN	WLAN 802.11 b.g.n.ac
Drucker	58-mm-Thermoempfang und Etikett Drucker
Papierrolle	Breite: 58 mm; Durchmesser: ≤40 mm
Scanner	5 Megapixel Kamera-Decodierung , 2D-Scanner (Option)
NFC	Unterstützt ISO/IEC 14443A&B, Mifare, Felica-Karte
SIM-Steckplatz	Sim*2 (Standard) oder Sim*1Sam*1 als Option
Lautsprecher	Digital-Audio-Lautsprecher
Fingerabdruck	FBI/STQC Fingerabdruck (Optional)
GPS oder AGPS	Unterstützt GPS AGPS
MDM	Unterstützung
Peripheriezubehör	
Zubehör	USB-Typ C*1 Laden Adapter*1 Benutzerhandbuch*1

Umfeld	
Betriebstemperatur	0 bis 40 Grad Celsius
Lagertemperatur	- 10 bis 60 Grad Celsius
Arbeitsfeuchtigkeit	10%~80%
Luftfeuchtigkeit bei Lagerung	10%~90%

Produktdetails

Built-in MDM Control System



Fingerprint Security

Ministry of Public Security or FBI fingerprints (Optional)

70%

Sensitive
Ascension

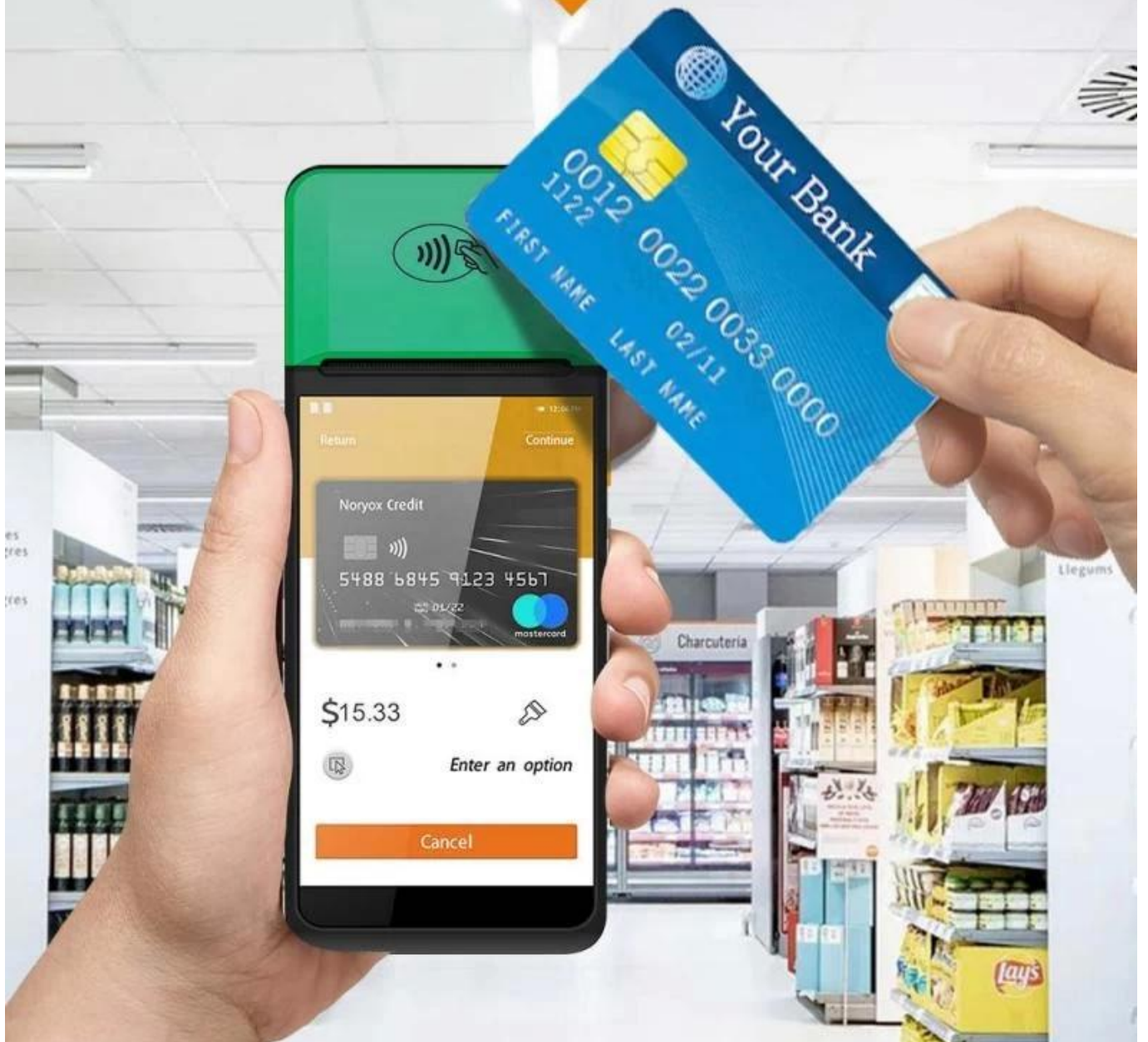


Fingerprint ID



NFC Contactless Card

NFC contactless card reader payment function



Double Frequency WFI

Double insurance of 4G high Speed network and dual-frequency WIFI network can ensure the real-time data communication in different using environment



2.4G 5G



Structure specification

SMART PRINTING



Simple construction Easy operation



Large Capacity Battery

Removable 6400mAh large capacity pure cobalt battery



Dimensions

SMART PRINTING



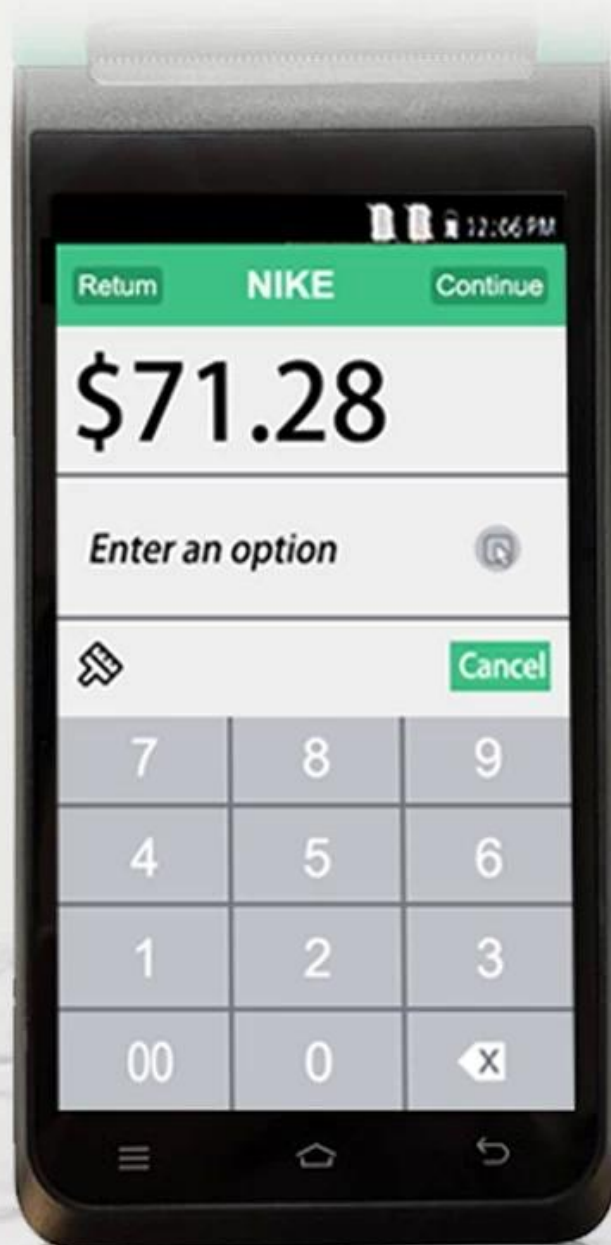
197*82*57.5mm



Manual measurement has slight errors and does not affect the use.

5.5-inch HD IPS Screen

720*1280 resolution, stable every pixel, allowing users to see more clearly



Strong Performance



OS

Android System



Memory

3GB RAM+16GB ROM

Support Download APP from Google Play Store

High Quality and Performance, Your reliable POS



Thermal Receipt / Label Printing

Built-in high speed 58mm thermal receipt and label printer



Large paper bin Print more durable

Can accommodate 42mm diameter thermal paper to avoid frequent paper changes and improve printing efficiency.

58mm

Maximum
paper width

42mm

Maximum
paper diameter



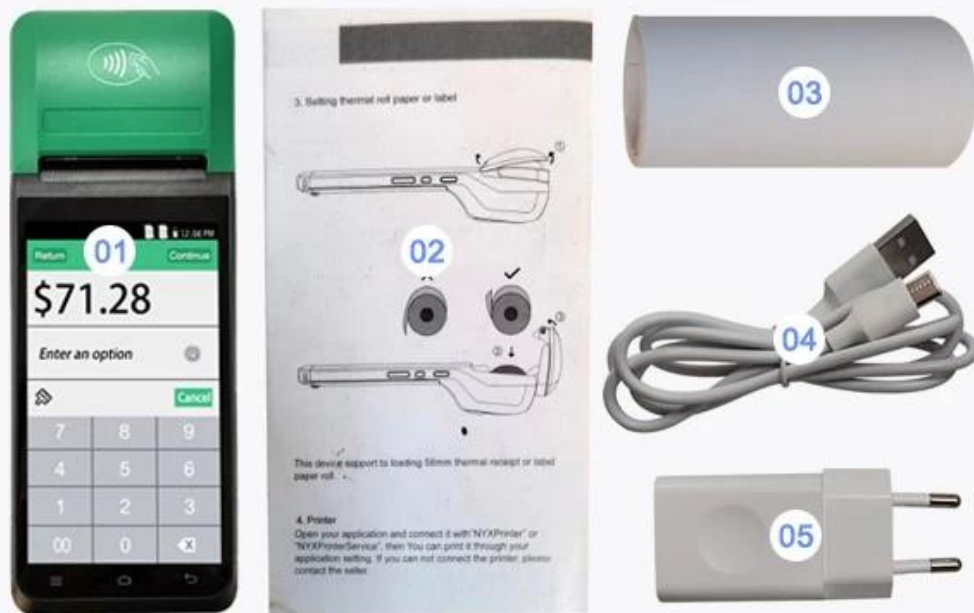
■ SMART PRINTING

Packaging accessories

SMART-PRINTING



Beautiful packaging, original accessories

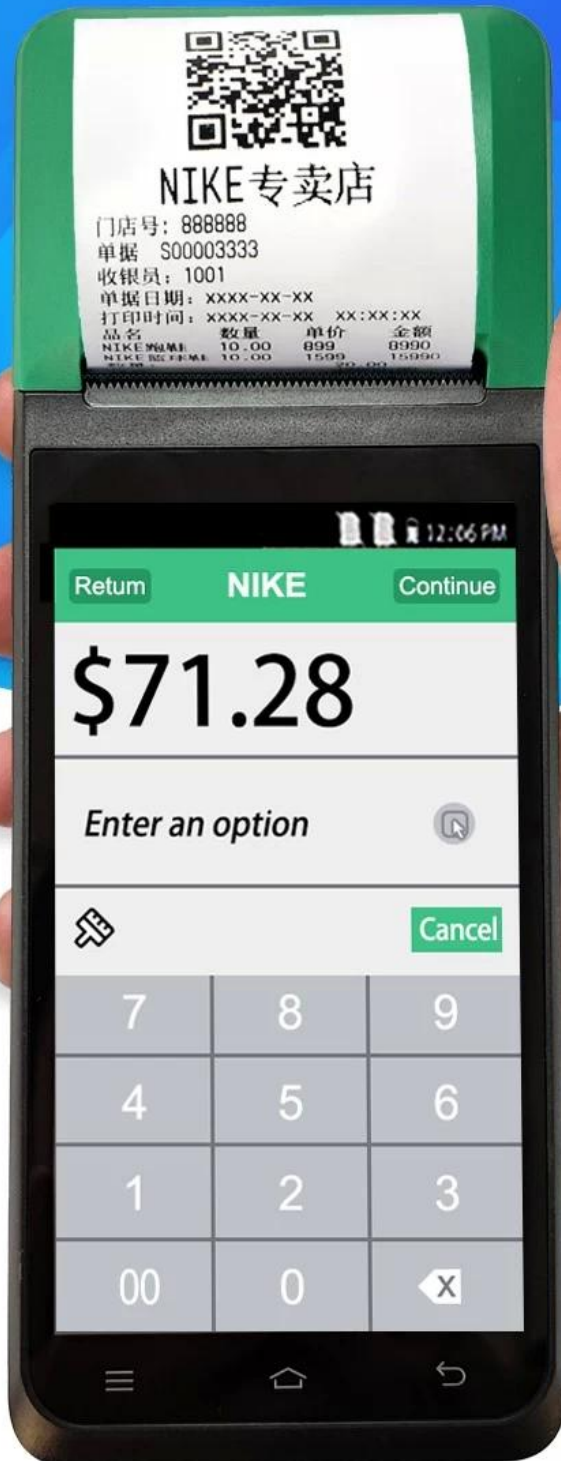


01 Machine 02 User Manual 03 Roller Paper

04 Type C Cable 05 Charging Adaptor

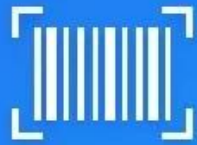
SMART Handheld POS Terminal

MULTI-PLATFORM AUTOMATIC PRINTING
easy to deal with a variety of working environment



5 Million Rear HD Camera

HD camera quickly identify barcodes QR codes
record important information
2D Barcode scanner for optional



Scan code



Photo



Video





Thermal Receipt Label Printing



Touch HD Screen



Multi-version Connection



5 Million Pixels



Large Volume Speaker



Large Capacity Battery



NFC Standard



CPU Deca-core

Multiple versions Connection options

Support full Net-com, Bluetooth, WIFI multiple versions of connection, Excellent experience



Support WIFI

Support Bluetooth 4.0

2G/3G/4G communication for optional

