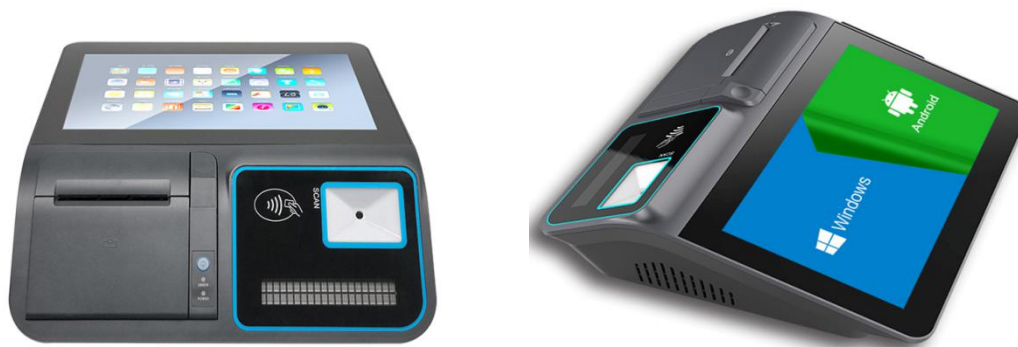


11.6 Inch All In One Android/Windows POS terminal

(M/N:POS-M1106-W/POS-M1106-A)



OCOM M1106 POS machine can be installed windows or android OS for choosing, its highly integration make many functions realized just by one POS, this smaller size model save customers much space and cost-effective

Features:

- Intel Celeron series and Rockchip CPU for option
- Hard Driver Msata SSD 64GB ,SSD 128GB an 256 GB for option
- 58mm and 80mm high speed thermal printer built in for option
- Multi-point projected capacitive touch panel
- Optional side MSR and VFD220 customer display mounted to back cover
- NFC card reader, bar-code scanner as option
- Ture flat and water-proof scratch-resistant surface display

Product specifications are subject to change without prior notice.

Together We Quest For The Best

Specification

Model	POS-M1106-W	POS-M1106-A
Name	11.6inch all in one Windows touch screen pos terminal	11.6 inch all in one Android touch screen pos terminal
Housing	plastic with metal combined	
Color	Whole gray color	
Display		
Main screen size	11.6 inch touch screen monitor	11.6 inch touch screen monitor
Resolution	1366*768,1920*1080 for option	1366*768,1920*1080 for option
Brightness	300cd/m ²	
View angle	Horizon: 160; Vertical :150	
Touch screen	multi-point projected G+G capacitive touch	
Customer display	2*20 VFD or 2*20 LCD mounted to back cover for option	
Performance		
Motherboard	Intel Celeron Bay Trail J1900 2.0GHz	ARM Cortex-A17,RK 3288 quad core 1.8GHz CPU
System Memory	1*SO-DIMM DDRIII slot, support1333*/1600 4GB (default) 2GB/8GB for option	On board 2GB DDRIII
Storage device	Msata SSD 64GB or higer, up to 256GB	16GB eMMC, support 32GB TF card expanded for option
Audio	On board Real Tek ALC662 audio chip	On board Real Tek audio chip ALC5640
LAN	10/100Mbps,Realtek RTL8111F Lan chip built in Mini PCI-E slot,support embedded WIFI module	10M/100M RTL8201F,10M/100M/1000M RTL8211E for option
Operating System	Windows7/8/10, Embedded,WEPOS,Linux	Android 7.0
Connectivity		
External I/O port(J1900/RK3288)	power button*1	
	12V DC in jack*1	
	COM(RS232) * 1, up to 3ports	
	LAN:RJ-45*1	

Product specifications are subject to change without prior notice.

Together We Quest For The Best

	RJ11 for Cash drawer *1 for option	RJ11 for Cash drawer *2 for option
	VGA(15Pin D-sub)*1	TF card slot*1
	USB *5	USB *5
	MIC in*1 Audio out*1	N/A
Options		
80mm thermal printer	direct thermal printing	
	170mm/s printing speed	
	79.5-/+ 0.5mm paper width and printable width 72mm	
	with auto cutter function and thermal head life 100km	
58mm thermal printer	direct thermal printing	
	70mm/s printing speed	
	57.5-/+ 0.5mm paper width and printable width 48mm	
	thermal head life 50km	
MSR	ISO7811 1/2/3 Tracks, Support Dual-swiping	
NFC	ISO14443TypeA	
scanner	1D/2D barcode decoding	
Battery	5200mAh large capacity battery	
Package		
Weight	Net 2.4Kg Gross 3.1Kg	
Package with foam inside	400*390*190mm	
Environment		
Operating temperature	0 to 40 degrees centigrade	
Storage temperature	-10 to 60 degrees centigrade	
Working humidity	10%~80% No condensation	
Storage humidity	10%~90% No condensation	
Accessories		
Power adapter	110-240V/50-60HZ AC powerinput ,DC12/5A output adaptor	
Power cable	Power cable plug compatible with USA /EU / UK etc and customized available	
CD driver	Motherboard driver and touch driver inside	
Other		
Compliance	FCC Class A/CE Mark/LVD/CCC	

Product specifications are subject to change without prior notice.

Together We Quest For The Best

OCOM Technologies Limited

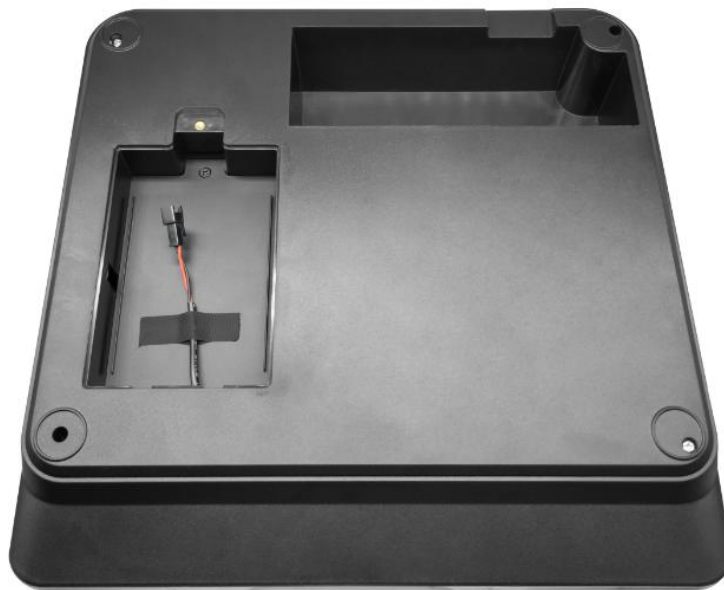
Website: www.ocominc.com, www.possolution.com.cn

E-mail: ocom@ocominc.com

Tel/Fax: +86.755.8605.3207



More product pictures shown



Product specifications are subject to change without prior notice.

Together We Quest For The Best

OCOM Technologies Limited

Website: www.ocominc.com, www.possolution.com.cn

E-mail: ocom@ocominc.com

Tel/Fax: +86.755.8605.3207



external I/O ports



Product specifications are subject to change without prior notice.

Together We Quest For The Best