

MAno Androideeee POS Terminal con T hermal Etiqueta y Recibo impresora

(MINNESOTA:POS -T2)

Características:

1. **Deca-núcleo** Procesador MT6797 Tri-Cluste-A72*2A53*8 de 2,3 GHz
2. Térmico incorporado de alta Velocidad de 58 mm **recibo y etiqueta** Impresora
3. Estándar **RAM de 3ES** 16G de ROM
4. Altavoz de gran volumen incorporado
5. Módulo NFC incorporado
6. **2 * SIM** ranura para tarjetas
7. Compatible con USB tipo C **carga rápida**
8. **Extraíble 6400mAh** gran capacidad **cobalto puro** batería
9. Lector de código de barras 1D y 2D e impresora digital para opciones

Especificación

Modelo	- T2
Nombre	5,5 pulgadas pantalla táctil capacitiva, apoyar la firma electrónica
Batería	3.8 V/ 64 00mAh
Adaptador de corriente	Aporte 100-240V , 50/60Hz ,1.5A Producción 5 V corriente continua /2 A
Interfaz del cargador	USB tipo C
Pantalla principal	Pantalla táctil HD de 5,5 pulgadas mostrar
Resolución	720*1280IPS
Actuación	
UPC	Procesador Deca-core MT6797 Tri-Cluste-A72*2A53*8 2,3 GHz
RAM	3 GB
Flash	Flash de 16GB
Comunicación	2G/3G/ 4G
Sistema operativo	Android 8.0
Botón	Botón de encendido, botón de escaneo ,Botón de volumen
Bluetooth	bluetooth 4.0
WIFI	WIFI 802.11 b.g.n.ac
Impresora	Recibo térmico de 58 mm y etiqueta Impresora
Rollo de papel	Ancho: 58 mm; Diámetro: ≤40 mm
Escáner	5 megapíxeles Decodificación de cámara , Escáner 2D (opcional)
NFC	Compatible con ISO/IEC 14443A&B, Mifare, tarjeta Felica
Ranura SIM	Sim*2 (predeterminado) o Sim*1Sam*1 para la opción
Altavoz	Altavoz de audio digital
Huella dactilar	FBI/STQC Huella dactilar (Opcional)
GPS o AGPS	Soporte GPS AGPS
MDM	Apoyo
Accesorios periféricos	

Accesorios		USB tipo C*1
		cargando adaptador * 1
		manual de usuario * 1
Medioambiente		
Temperatura de funcionamiento	de	0 a 40 grados centígrados
Temperatura almacenamiento	de	- 10 a 60 grados centígrados
Humedad de trabajo		10%~80%
Humedad almacenamiento	de	10%~90%

Detalles de producto

Built-in MDM Control System



Fingerprint Security

Ministry of Public Security or FBI fingerprints (Optional)

70%

Sensitive
Ascension

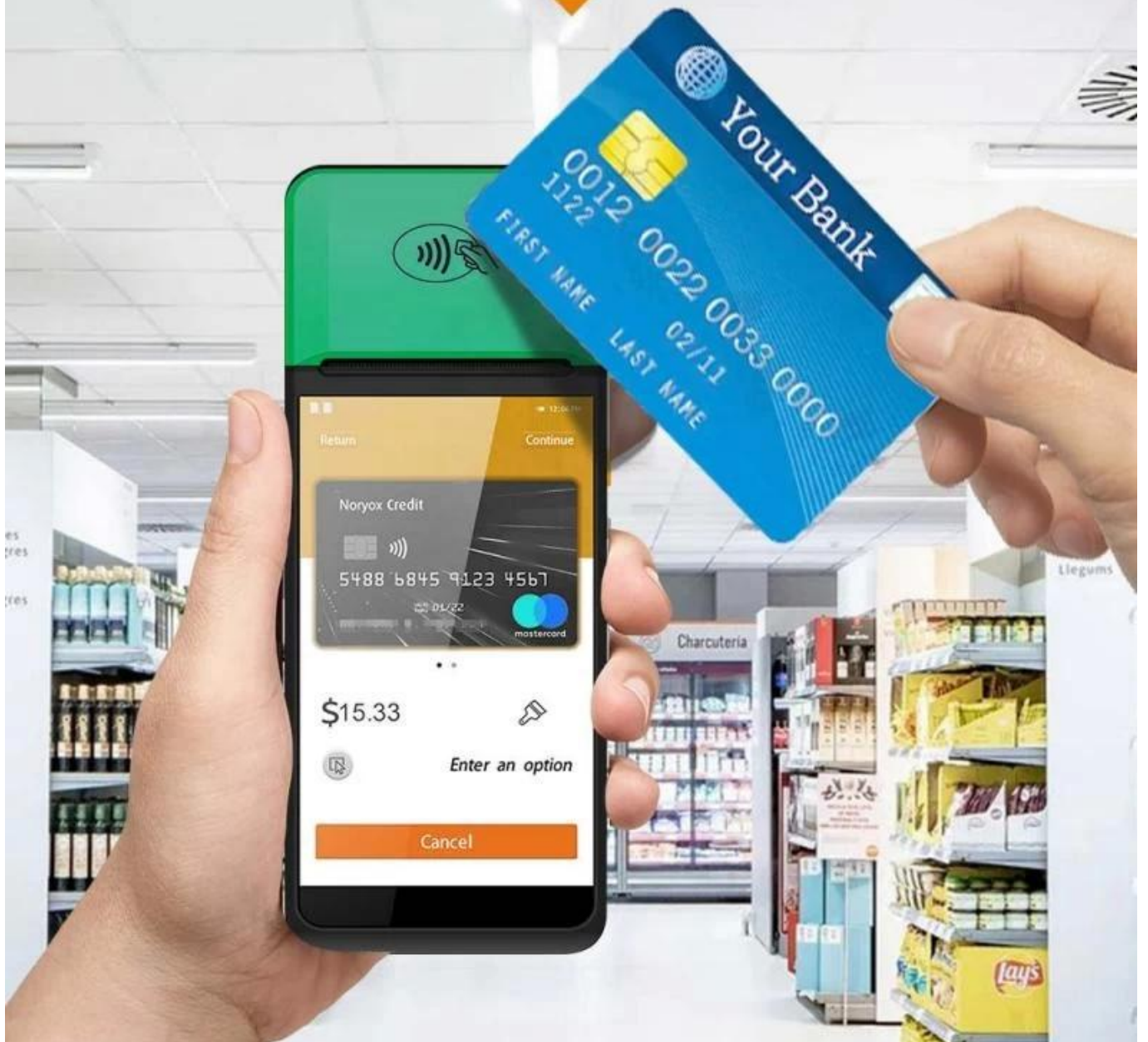


Fingerprint ID



NFC Contactless Card

NFC contactless card reader payment function

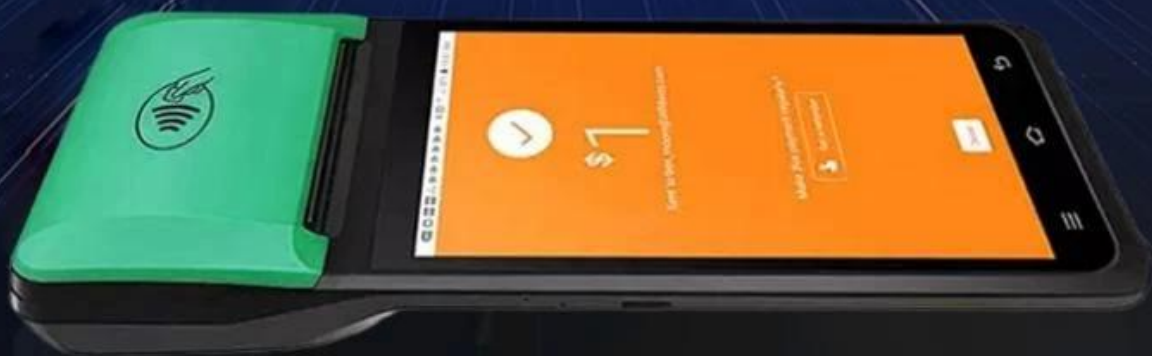


Double Frequency WFI

Double insurance of 4G high Speed network and dual-frequency WIFI network can ensure the real-time data communication in different using environment



2.4G 5G



Structure specification

SMART PRINTING



Simple construction Easy operation



Large Capacity Battery

Removable 6400mAh large capacity pure cobalt battery



Dimensions

SMART PRINTING



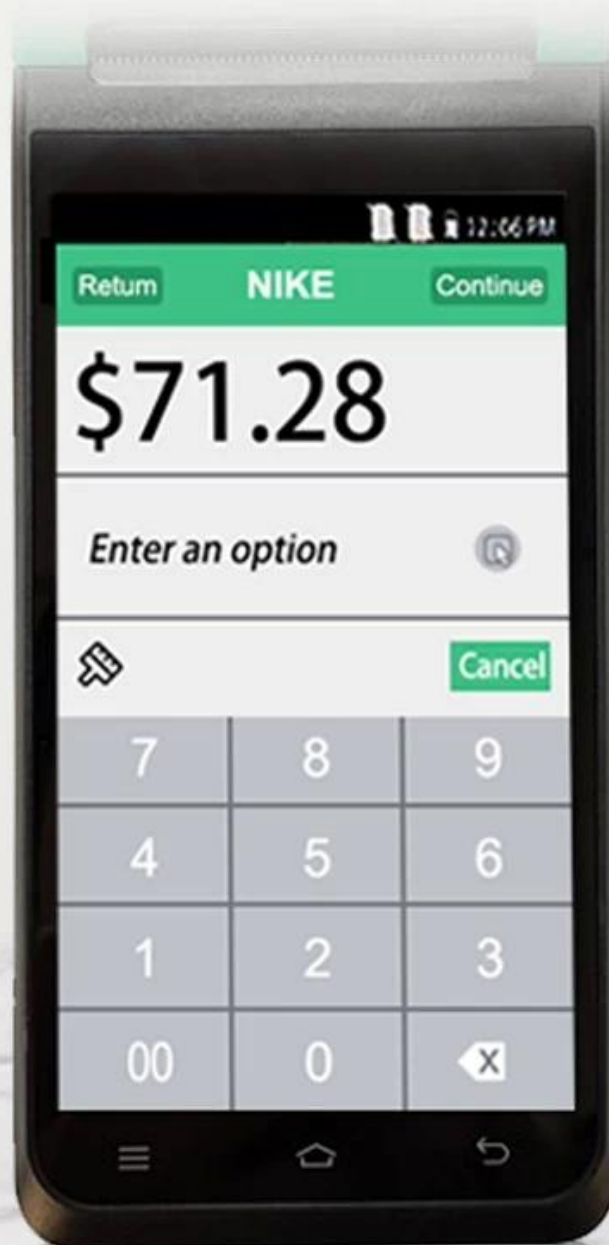
197*82*57.5mm



Manual measurement has slight errors and does not affect the use.

5.5-inch HD IPS Screen

720*1280 resolution, stable every pixel, allowing users to see more clearly



Strong Performance



OS

Android System



Memory

3GB RAM+16GB ROM

Support Download APP from Google Play Store

High Quality and Performance, Your reliable POS



Thermal Receipt / Label Printing

Built-in high speed 58mm thermal receipt and label printer



Large paper bin Print more durable

Can accommodate 42mm diameter thermal paper to avoid frequent paper changes and improve printing efficiency.

58mm

Maximum
paper width

42mm

Maximum
paper diameter



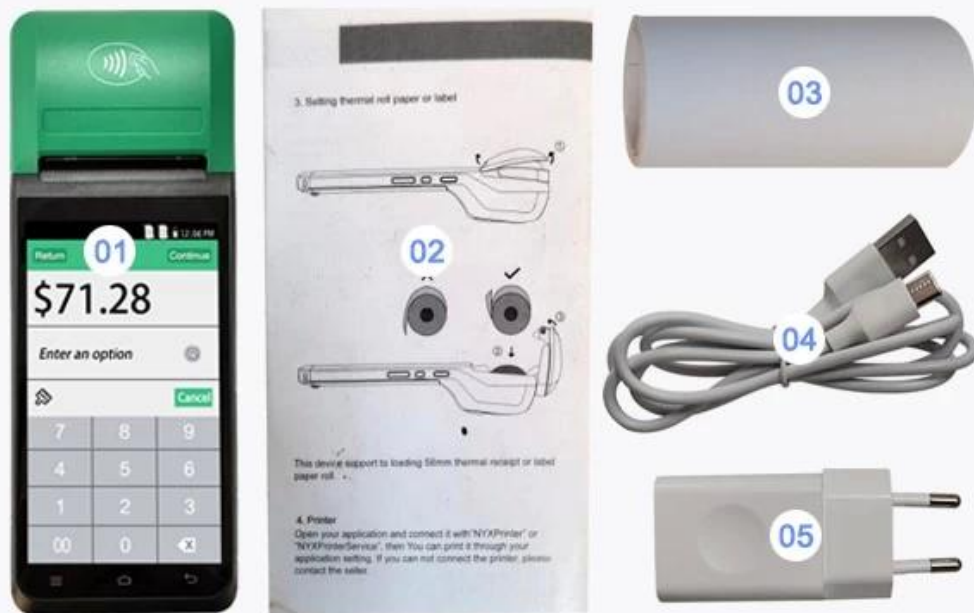
■ SMART PRINTING

Packaging accessories

SMART-PRINTING



Beautiful packaging, original accessories

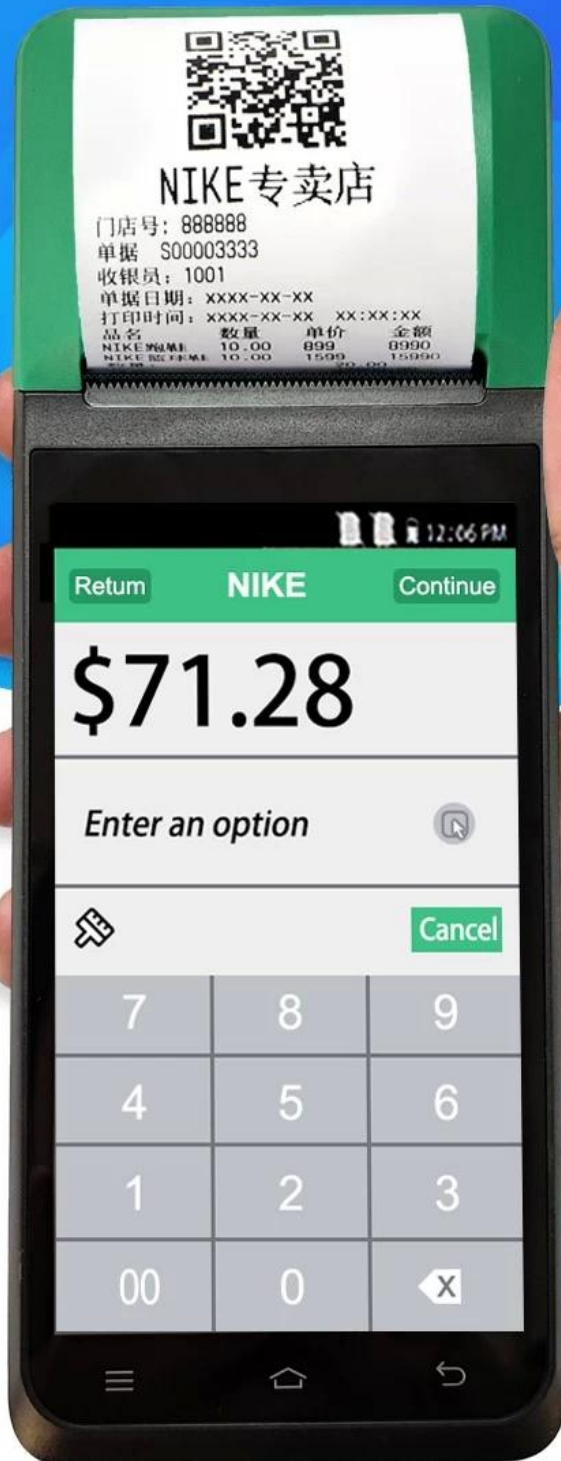


01 Machine 02 User Manual 03 Roller Paper

04 Type C Cable 05 Charging Adaptor

SMART Handheld POS Terminal

MULTI-PLATFORM AUTOMATIC PRINTING
easy to deal with a variety of working environment



5 Million Rear HD Camera

HD camera quickly identify barcodes QR codes
record important information
2D Barcode scanner for optional



Scan code



Photo



Video





Thermal Receipt Label Printing



Touch HD Screen



Multi-version Connection



5 Million Pixels



Large Volume Speaker



Large Capacity Battery



NFC Standard



CPU Deca-core

Multiple versions Connection options

Support full Net-com, Bluetooth, WIFI multiple versions of connection, Excellent experience

