

Factory 76mm Impact dot matrix receipt printer with auto cutter

(Model: OCPP-763C)

Features

76MM impact dot matrix receipt printer with automatic cutter;

Compatible with EPSON;

With Black mark detection function;

Serial+USB interface;

Support cash drawer kick out;

Easy operation and elegant appearance.

Specifications:

Printing method	9 pins serial dot matrix
Print font	FONT A: 33 or 35; FONT B: 40 or 42
Column capacity	400dots
Character size	ANK, Font A:9*9dots, Font B:7*9dots Simplified Chinese, traditional Chinese:16*16dots
Character set	Buyer option
Character per line	400dots
Printing speed	4.5lines/sec
Receive buffer	Selectable as 45 bytes or 4k bytes using Dip switches
Paper width	75.5±0.5mm
Copy capability	One original and two copies
Ribbon	ERC-39
MCBF(life)	10,000,000 lines
Driver	Win9X/Win ME/Win2000/Win2003/WinNT/Win XP/Win Vista/Win 7/Linux
CPU	32 bit
Storage environment	Temperature (-10~60°C) humidity (10~90%)
Working environment	Temperature (0~50°C) humidity (10~90%)
Dimension	230X146X145mm
Gross weight	3.75KG
Auto cutter	Yes
Paper end sensor	Yes
Paper thickness	0.06-0.08mm
Roll paper	75.5±0.5mm* φ65mm
Interface	Serial+USB
Command	Compatible with EPSON

Cash drawer control	DC 12-24V/1A
Power supply	DC24V/2.5A

Available Power Plug



Product Details:



OCPP-763C





OCPP-763C





OCPP-763C





OCPP-763C





OCPP-763C



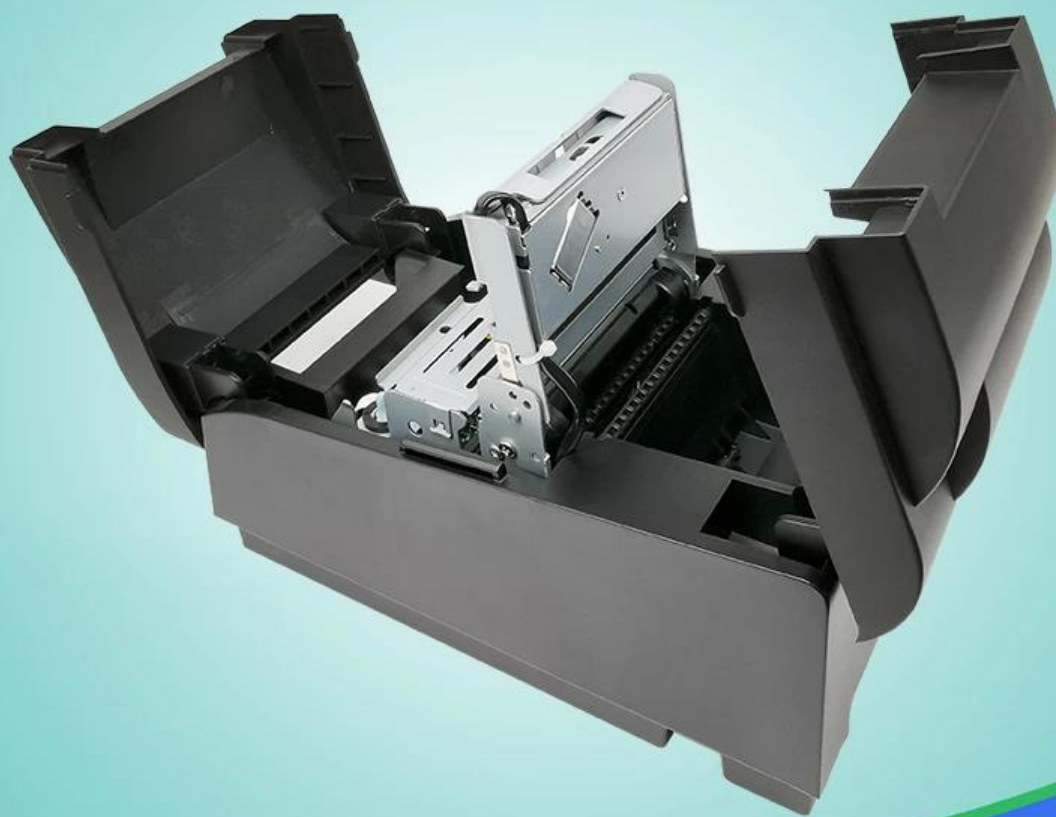


OCPP-763C





OCPP-763C





OCP-763C





OCPP-763C



Relevant documents:

[*IP Address Configure Manual](#)

[*Instruction Manual](#)

[*Driver for all windows system](#)

[*Driver for Linux](#)

[*Printer Parameters Setting Tools](#)

[*CD Files](#)

