

15.1-inch Windows Touch Screen POS Terminal with Aluminium Alloy Base

(M/N: POS-1519)

OCOM 1519 series POS terminal has aluminium alloy base, It has intel Celeron and intel core I series CPU for option, it is easy to access IO port for external devices such as thermal printer, label printer, mobile USB disk .This model is very convenient for maintenance by removing the back cover.

Features:



Intel Celeron series and intel core I3 I5 processor for option;

Hard Driver Msata SSD 64GB, SSD 128GB and 256 GB for option;

Multi-point projected capacitive touch panel;

Optional side MSR and VFD220 customer display mounted to back cover;

Ture flat and water-proof scratch-resistant surface display;

Save shipping cost by dismounting the base plate to shrink the package if needed.

Specification

Model	POS-1519
Name	15.1 inch all in one touch POS terminal
Housing	Platic shell machine body and aluminium base
Color	whole black color machine
Display	
Main screen	15.1 inch touch screen monitor
Resoluiton	1024*768
Brightness	250cd/m2
View angle	Horizon: 150; Vertical :140
Touch screen	Multi-point projected G+G capacitive touch
Sub-display	15.1-inch display or 12.1-inch display W/o touch function for option
Customer display	2*20 VFD display mounted to back cover for option
Performance	
Motherboard	Intel Celeron J4125 2.0GHz or intel core I3 / I5 CPU for option
System Memory	1*SO-DIMM DDR4 slot, support 2400mHZ, 4GB/8GB for option
Storage device	Msata SSD 64GB or higer, up to 256GB
Audio	On board Real Tek ALC662
LAN	10/100Mbs,Realtek RTL8111F Lan chip built in Mini PCI-E slot,support embedded WIFI module
Operating System	Windows7/8/10, Embedded,WEPOS, Linux
Connectivity	

External I/O port J4125	power button*1,12V DC in Jack*1
	LAN:RJ-45*1
	USB*6
	15PIN D-sub VGA *1
	RS 232*2
	line out*1,MIC in*1
Options	
MSR	Optional side MSR
Package	
Weight	Net 6.5Kg, Gross 8.0Kg for single screen
Package with foam inside	425*275*405mm for single screen, 440*295*425mm for dual screen
Environment	
Operating temperature	0 to 40 degrees centigrade
Storage temperature	-10 to 60 degrees centigrade
Working humidity	10%~80% No condensation
Storage humidity	10%~90% No condensation
Accessories	
Power adapter	200-240V/50-60HZ(default) , 110-240V/50-60HZ AC power input, DC12V/5A output adaptor
Power cable	Power cable plug compatible with USA /EU / UK etc and customized available

15.1-inch Windows POS Terminal with Aluminium Alloy Base



Match with other products



Windows 11

Windows 10

Windows 8

LINUX



J1900, J4125 or i3 / i5 for option



Memory 4G or 8G



Msata SSD 64GB or higher



15.1 inch touch screen monitor



Sub-display, VFD or LCD display for option



Optional Side MSR

HD Capacitive Screen

15.1-inch multi-point projected capacitive touch panel with 1024*768 resolution

Waterproof

Oilproof

Dustproof Front Screen



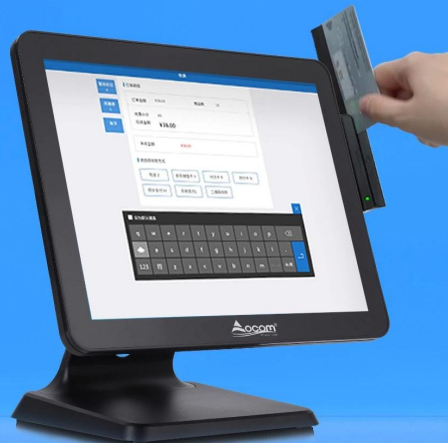
Customer display for option

Sub-display or VFD/LCD display for option



Optional Side MSR

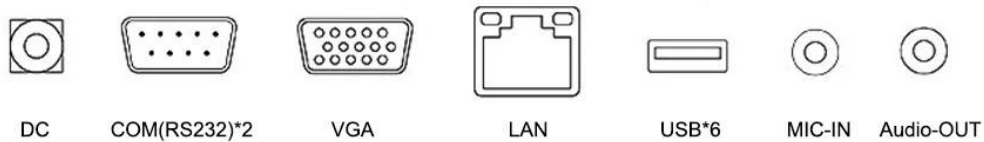
Magnetic stripe cards can be read



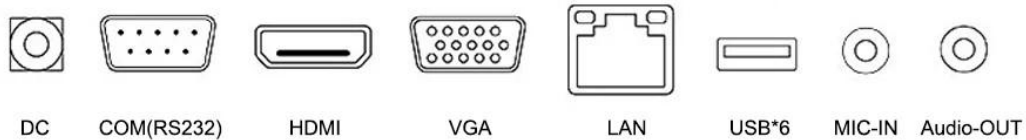
Product Interface



Windows interfaces J1900/J4125



Windows interfaces i3/i5



Screen Size



↙↗ 15.1 inches

or



↙↗ 15.1 inches

+

- 15.1 inches
- 12.1 inches
- 2*20 VFD
- 2*20 LCD

OEM/ODM

FAMOUS PARTNER BRANDS



[Click here](#)

Customized For Your Project



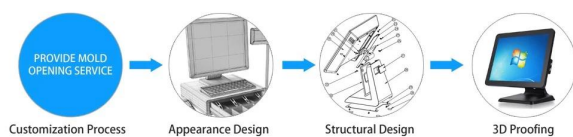
Customized Your LOGO



Customized Your Packaging



Support Customer's Idea To Do The Design



Product Details













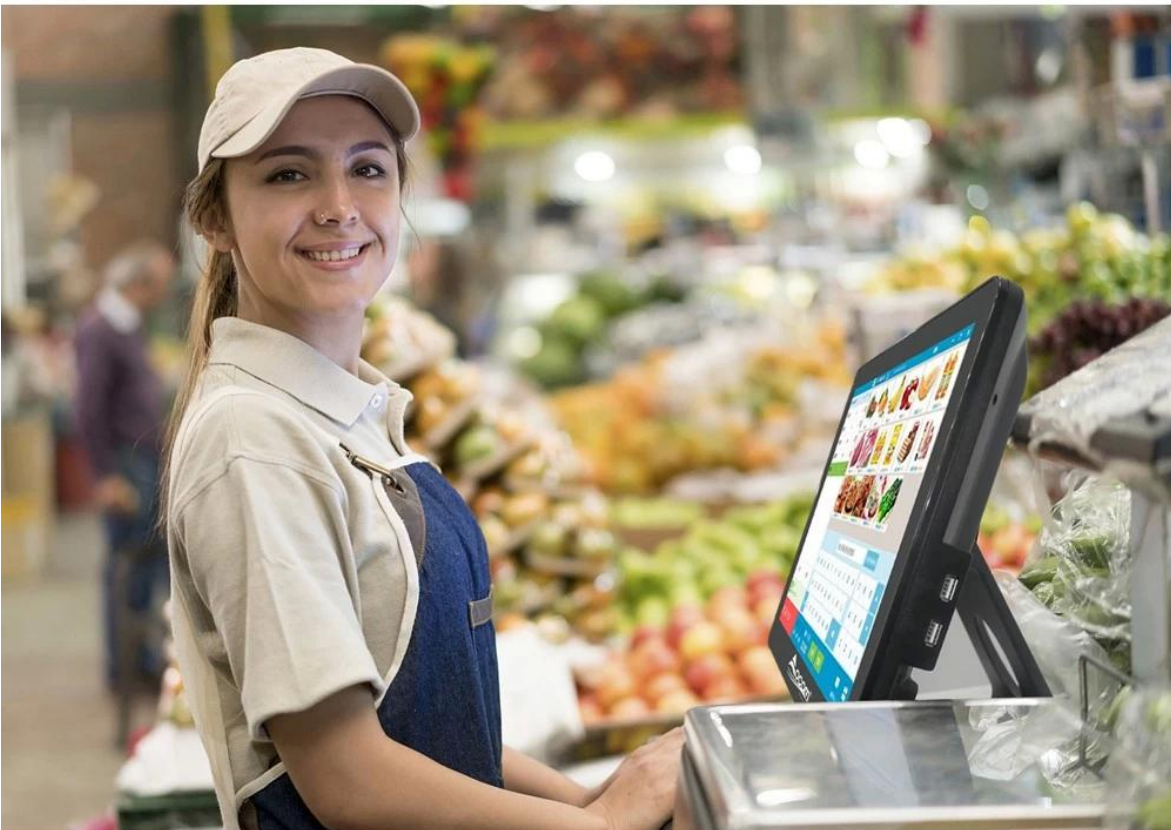






**All in one
Touch POS system**

APPLICATION



Relevant documents:

[POS-1519 Spec](#)

[Win 6/7/8/10_GeminiLakeJ4125 J1900_win10 driver](#)

[J1900 Win7 driver](#)