

# Cassetto contanti elettronico 5B8C o 6B4C

(Modello n.: ECD-420-X)

## Caratteristiche:

Il guscio è realizzato in SECC e SPCC;  
Verniciatura a polvere ibrida testurizzata;  
Compatibile con ampia tensione 12V -24V;  
serrature a 3 posizioni;  
Uno Fessura per assegni;  
5B8C o 6B4C per facoltativo;  
Sensore microinterruttore per optional;  
Uscita inferiore per rendere il desktop più ordinato;  
Cavo collegabile per una facile manutenzione.

## Specifiche:

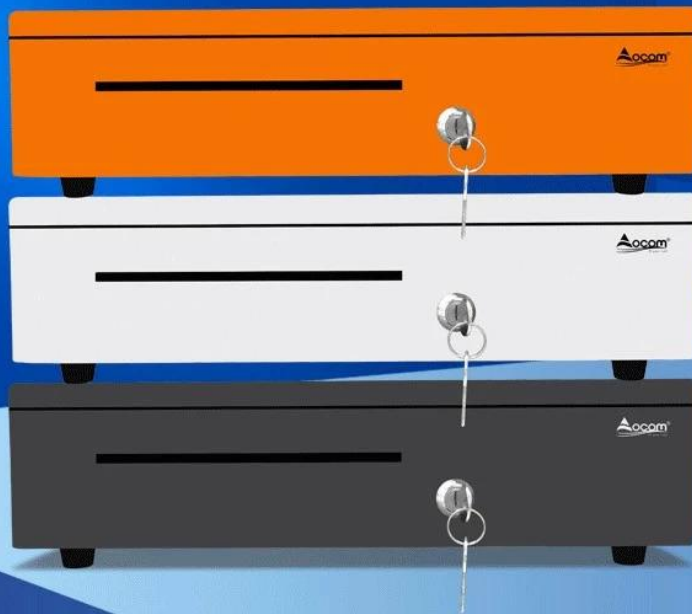
Materiali	Il coperchio superiore utilizza 0,8 mm SPCC, il coperchio inferiore utilizza 1,0 mm SECC	
Vassoio per banconote	5bill o 6bill (5B8C Standard, 6B4C per facoltativo)	
Larghezza	80/73/73/73/68 mm	
Vassoio per monete	8moneta o 4 monete	
serratura	3 blocchi posizione (bloccati e possono essere attivati e aperti)	
Energia	Tensione ampia 12V-24V	
Slot	Singolo slot di controllo	
Tutta la vita	Testato per minimo un milione di cicli	
Interfaccia	RJ11 o RJ12 (RJ12 per funzione sensore microinterruttore)	
Colore	Nero o bianco	
peso	4,5 kg (netto), 5,2 kg (lordo)	
Dimensioni	405 (P) x 420 (L) x 100 mm (A) (con piedini da 10 mm)	
Dimensioni scatola	480□L□X465□P□X 160□A□	

# Cash Drawer Factory

## Electronic Metal Cash Drawer

15 Years Experience

OEM/ODM



5 or 6 Adjustable  
Bill Holders



8 or 4 Removable  
Coins Holders



Smooth Guide



Scratch Resistant Texture  
Powder Coat

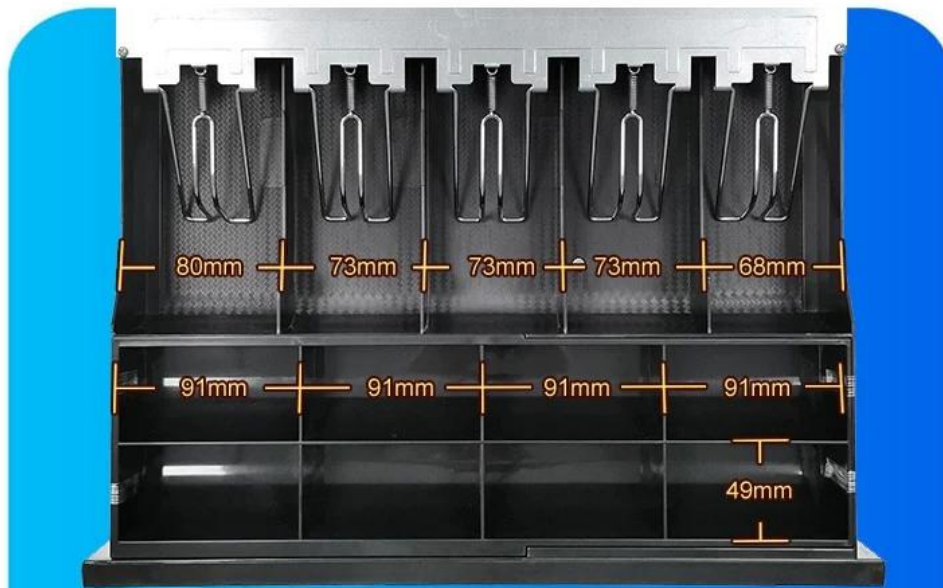


A Media Slot



3-position Locks

# Details Show



USD



EUR



GBP

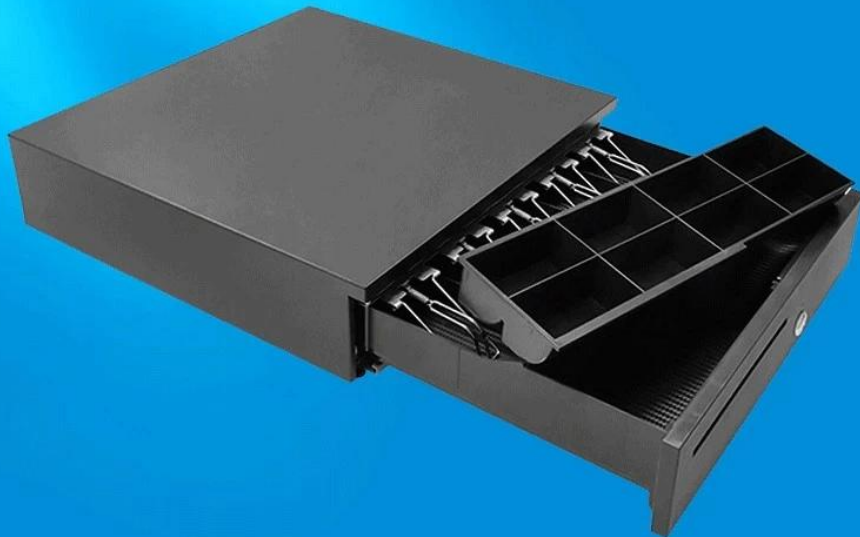


RMB

5 or 6 adjustable Bill holders and 8 or 4 removable Coins holders to suit different currencies such as Euro, US dollar, British pound, RMB, ect.

# Removable Coins Tray

The cash drawer has a removable coin tray. The removable coin tray can be taken out separately for easy counting.



A media slot on the front panel for quick storage of large bill, checks, receipts and cards without opening drawer.

# Over 1 Million Lifecycles

Tested to over 1 million opening/closing cycles, ensure smooth opening and closing.



# Secured With 3-Position Key Lock

Manual open, Electrically open, Locked



## Multiple Operation Method

### Method 1

The cash drawer is used independently, turn the key, and the drawer will automatically pop open. Push the drawer to close automatically.



### Method 2

Connect to a receipt printer to use. When the cashier prints the receipt, the cash box can be automatically opened.

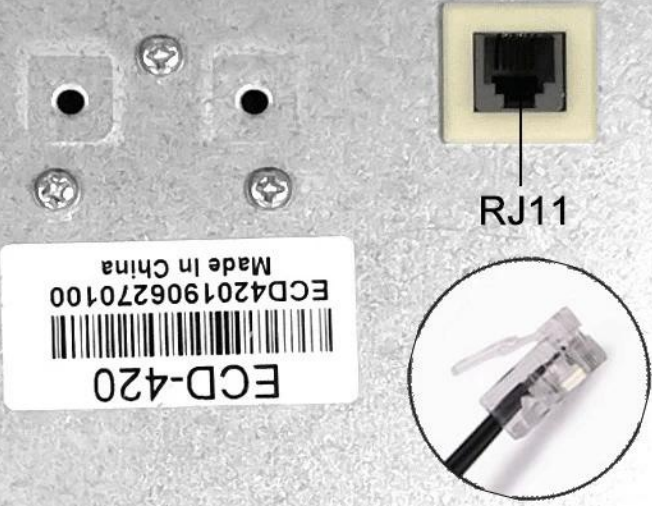


### Method 3

Connect to computer to use. Need to buy a USB Trigger, set the relevant driver ports and hotkeys.



A removable cable interface at the bottom make it easy to replace the cable without disassembling the bottom plate.



# Strong Construction Design

The load-bearing capacity exceeds 60KG. Cash drawer can bear heavy weight without any deformation even after long-term use.



## CUSTOM PROJECT

A central image of a black cash drawer is surrounded by four callout boxes. The top-left box features a rainbow circle and the text 'Custom Colors'. The top-right box shows a stack of three cash drawers in different colors (orange, silver, black). The bottom-right box shows the 'Acom' logo with the tagline 'All your safe' and the text 'Silk Printing Brand Design/LOGO'. The bottom-left box shows a cardboard box for the cash drawer with the text 'Custom Packaging'.

Just provide your country or demand,  
and we will introduce you the product model that suits you

# Application



Bar



Restaurant



Coffee Store



Mile Tea Store



Bakery



Convenience Store



Library



Supermarket



# FACTORY STRENGTH

## Raw Materials And Semi-FG Products



## Production Processing Equipment



## FG Warehouse



## Deliver The Shipment



