

Touch in alluminio pressofuso Windows/Android da 15,6 pollici POS terminale

(M/N: POS-1561)

OCOM POS-1561 POS il terminale ha guscio e base in lega di alluminio, ha informazioni CPU Celeron e Intel Core serie I come opzione. dispone di ricche interfacce I/O per essere collegato a più dispositivi esterni.

Caratteristiche:



Buon sistema di dissipazione del calore POS lavorare bene in ambienti più difficili;

Il corpo macchina super sottile e il design elegante migliorano il tuo profilo più alto;

La gestione dei cavi rende la scrivania della cassa più ordinata e consente di risparmiare molto spazio per l'uso;

Supporta lo schermo secondario "One Line Connect";

Struttura separata più scientifica per una facile manutenzione e smontaggio;

La base con doppia struttura pieghevole riduce le dimensioni del pacco e consente di risparmiare molto sui costi di spedizione;

La base flessibile lo consente POS posizionabili in più modi e adatti a diversi banconi.

Specifica

Modello	POS-1561-W	POS-1561-A
Nome	Tocco da 15,6 pollici POS terminal	
Materiale dell'alloggiamento	Legia di alluminio più ABS	
Schermo		
Schermo principale	Monitor touch-screen da 15,6 pollici	
Risoluzione	1920*1080	
Luminosità	250 cd/mq ²	
Vista ad angolo	Orizzonte: 170, Verticale: 170	
Touch screen	Tocco capacitivo GG proiettato multipunto	
Display secondario	Display da 15,6 o 11,6 pollici con/o senza funzione touch come opzione	
MSR	Lettore di carte a 3 tracce opzionale	
Prestazione		
Scheda madre	Intel Celeron J6412, 2.0 GHz o Celeron J4125, Intel Core I3/I5 11a CPU come opzione	Serie Rockchip RK3568, quad core 2.0G, RK3588 per opzione
Memoria di sistema	1 slot DDR4 SO-DIMM, supporto 2400 mHz, 4 GB/8 GB/16 G per opzione	A bordo DDR4 4GB, 8G/16G per opzione
Dispositivo di archiviazione	SSD M.2 da 64 GB o superiore, fino a 512 GB	a bordo 32GB EMMC 64GB/128GB per opzione
LAN/WLAN	10/100/1000 Mb, chip Lan Realtek RTL8111F slot Mini PCI-E integrato, supporta il modulo WIFI incorporato	10/100/1000 Mbs, chip Lan Realtek RTL8111F, Supporta Wi-Fi 802.11b/g/n, BT3.0/BT4.0
Sistema operativo	Supporta Windows 10/11	Androide 11
Connettività		
Esterno Porta I/O J6412	Pulsante di accensione *1	
	Jack ingresso 12 V CC *1	
	LAN: RJ-45 *1, USB *8, COM *2, HDMI *1	
	Uscita linea e ingresso MIC 2in1 JACK *1	
	Porta di tipo C personalizzata per il secondo display (opzionale)	
Esterno Porta I/O RK3568	Pulsante di accensione *1	
	Jack ingresso 12 V CC *1	
	LAN: RJ-45 *1,USB *6, COM *1	
	RJ11 per cassetto contanti *1, slot per scheda TF *1, slot per scheda SIM *1	
	Uscita linea *1, ingresso MIC *1	
Porta di tipo C personalizzata per il secondo display (opzionale)		
Ambiente		
Temperatura di esercizio	Da 0 a 50 gradi centigradi	
Temperatura di conservazione	Da -20 a 60 gradi centigradi	
Umidità di lavoro	10%~90% Senza condensa	
Umidità di stoccaggio	10%~90% Senza condensa	
Pacchetto		
Peso	Netto: 6,0 kg, Lordo: 7,23 kg	
Confezione con schiuma all'interno	436*400*166 mm	
Accessori		
Adattatore di alimentazione	Ingresso alimentazione CA 110-240 V/50-60 HZ, adattatore uscita DC 12 V/5 A	
Cavo di alimentazione	Spina del cavo di alimentazione compatibile con USA/UE/Regno Unito ecc. e disponibile su misura	
Altro		
Conformità	FCC Classe A/Marchio CE/LVD/CCC	

OCOM New Products

15.6 Inches Die-cast Aluminum Touch POS Terminal

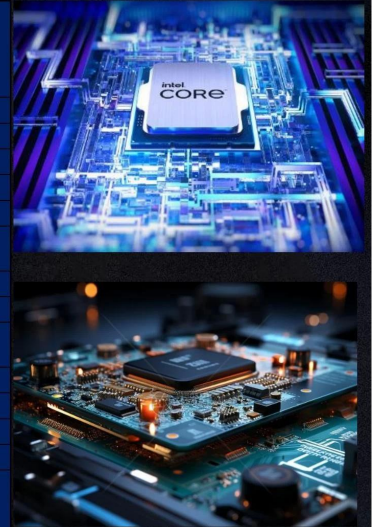


25mm Ultra-thin Body, Die-cast Aluminum Shell

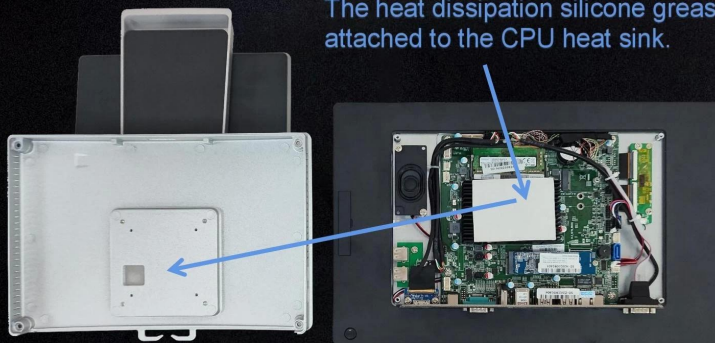


Using "Seavo" Motherboard, Equipped with Intel High-end Processor

Item	Intel Celeron J4125 @ 2.00GHz	Intel Celeron J6412 @ 2.00GHz (Standard)	Intel Core i3-1115G4 @ 3.00GHz	Intel Core i5-1135G7 @ 2.40GHz
Socket Type	FCBGA1090	FCBGA1493	FCBGA1449	BGA1526
CPU Class	Desktop	Mobile/Embedded	Laptop	Laptop
Clockspeed	2.0 GHz	2.0 GHz	3.0 GHz	2.4 GHz
Turbo Speed	Up to 2.7 GHz	Up to 2.6 GHz	Up to 4.1 GHz	Up to 4.2 GHz
# of Physical Cores	4 (Threads: 4)	4 (Threads: 4)	2 (Threads: 4)	4 (Threads: 8)
Cache	L1: 224KB, L2: 4.0MB, L3: 0MB	L1: 256KB, L2: 1.5MB, L3: 4MB	L1: 160KB, L2: 2.5MB, L3: 6MB	L1: 320KB, L2: 5.0MB, L3: 8MB
TDP	10W	10W	15W	15W
Yearly Running Cost	\$1.83	\$1.83	\$2.74	\$2.74
Other	Intel UHD Graphics 600	Intel UHD Graphics for 10th Gen Intel Processors	Intel UHD Graphics for 11th Gen Intel Processors	Intel Iris Xe Graphics
First Seen on Chart	Q1 2020	Q3 2021	Q4 2020	Q3 2020
# of Samples	478	84	1416	5605
CPU Value	0	71.4	21.8	31.9
Single Thread Rating	1165	1381	2650	2693
CPU Mark	2963	3853	6118	9845

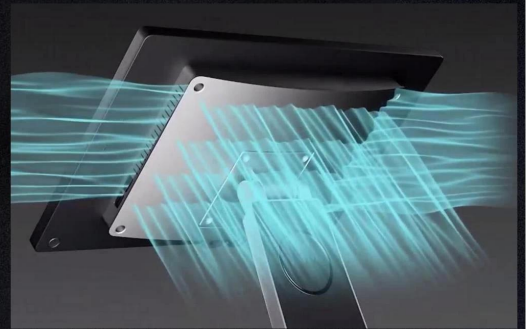


The scientific heat dissipation design allows the POS machine to have good heat dissipation performance and can still work normally even at an ambient temperature of 50 degrees Celsius.



The heat dissipation silicone grease is attached to the CPU heat sink.

And the heat dissipation silicone grease is adhered to the die-cast aluminum shell to quickly transfer heat.



More scientific layout structure makes the POS machine maintenance easier.

Tips: The mainboard of POS-1561 is installed behind the screen. When the casing is disassembled, the stand and the casing are completely separated, and the screen cables will not be damaged during disassembly.

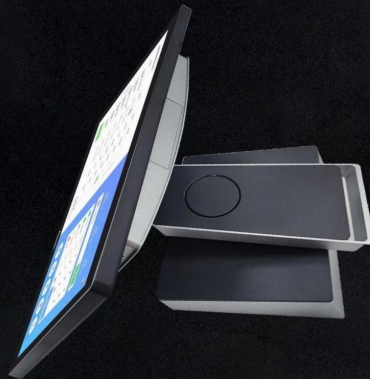


Other Model

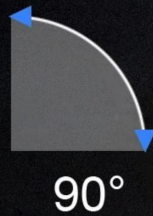


POS-1561

3 Placement Methods, Suitable for Various Counters



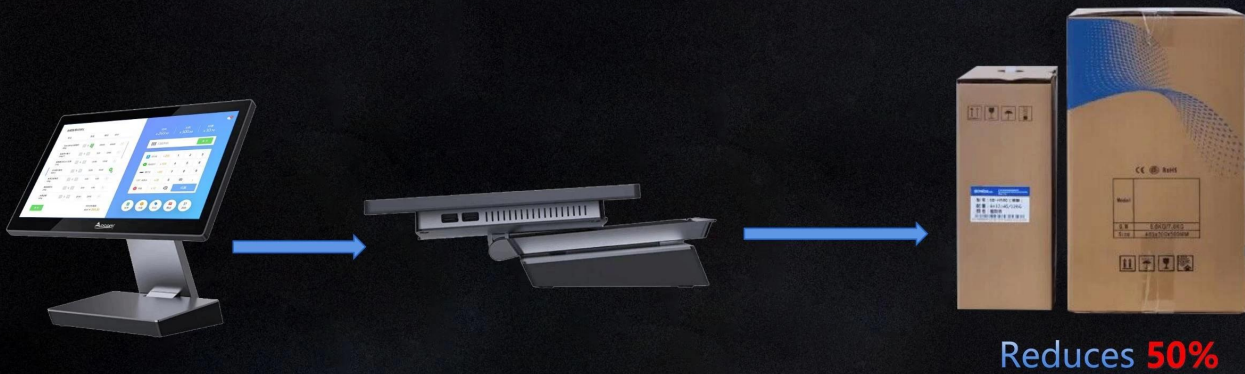
Two types of wall-mounting methods to enrich the application scenarios.



Cables management make cashier desk more tidier and save much space for use



Double Folding Shaft Reduces Packaging Volume By 50% !



Supports "One Line Communication" secondary screen, easy to assemble

Tips: One line can solves Power supply + Display Signal + Touch function at the same time



Two way to installation 2nd screen



Suitable for regular counters



Bank



Suitable for high and low counters



Bar

Specifications



OS

Windows 10/11
Android 11



Processor

Intel Celeron J4125/J6412
Intel core i3-1115G4
Intel core i5-1115G7
Rockchip RK3568/RK3568



Memory

DDR4 4GB/8GB/16GB



Storage device

64G/128G/256G/512G SSD(Windows)
32G/64G/128G eMMC(Android)



Main screen

15.6" LCD (1920*1080)
16.9, Multi-point projected G+G capacitive touch



Sub-display

15.6"/11.6"(POS-1561)
9.7"(POS-1518)
Touch function for option



Options

MSR



Housing material

Aluminium alloy Plus ABS
Black+Silver



Environment

Operating temperature: 0°C - 50°C
Storage temperature: -20°C - 60°C



Size (W*H*D)

Product size: 218*339*188(mm)
Packaging size: 440*165*400(mm)



Weight

Net: 5.6kg
Gross: 7.23kg



Installation

Desktop type
Wall mounting type

I/O Interface Diagram

Rich I/O interfaces, ultimate scalability

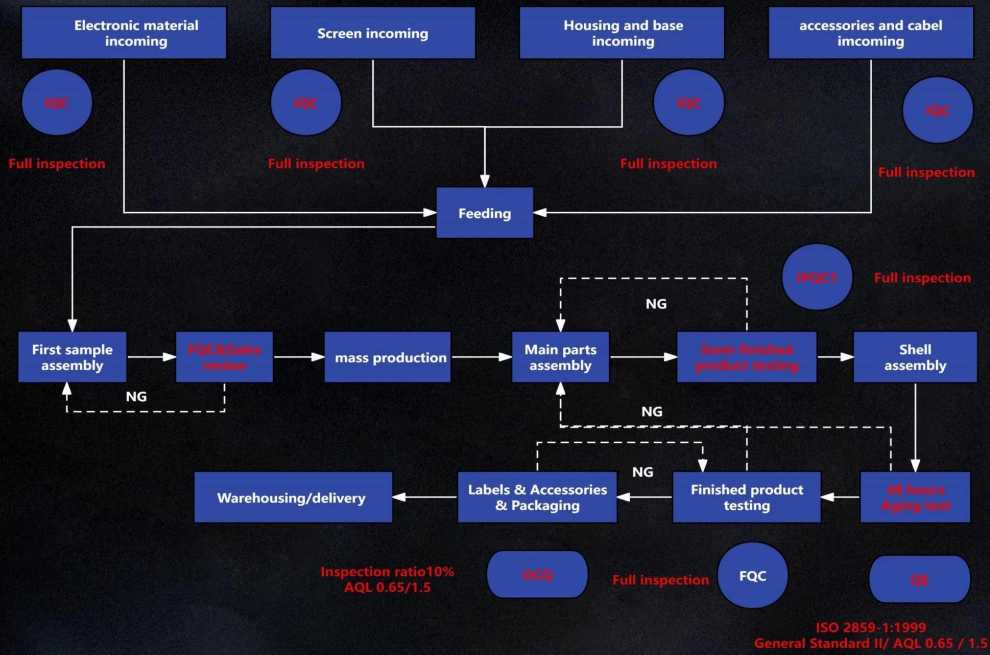


J6412
I3-1115G4
I5-1135G7
I7-1165G7

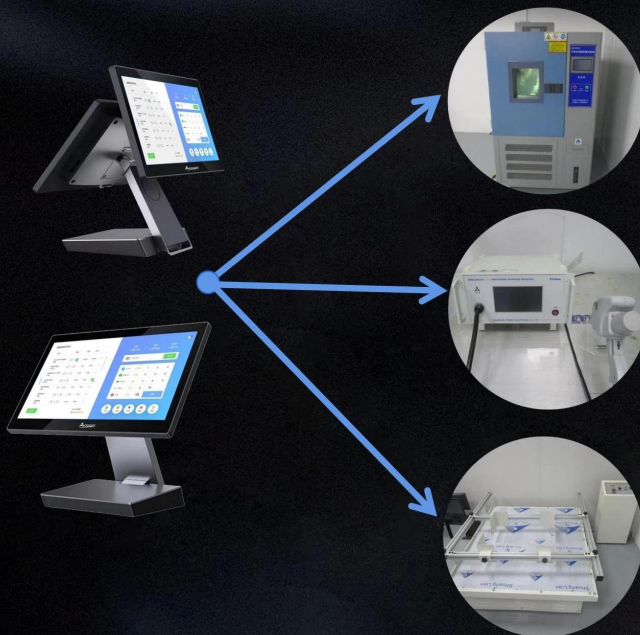
Function Options



Quality Control



Reliability Testing Equipment



Constant Temperature And Humidity Chamber

By adjusting the temperature in the thermostat to simulate the use environment from -10 degrees Celsius to 55 degrees Celsius, test the reliability of the POS machine in high and low temperature environments.

Electrostatic Discharge Generator

Use Electrostatic Discharge Generator to simulate tip discharge and test the POS machine's ability to protect against static electricity during air discharge and contact discharge.

Transport Vibration Testing Machine

Use the Transport Vibration Testing Machine to simulate vibrations during transportation and monitor the firmness of the connectors throughout the POS machine and the rationality of the internal structure.

Application Areas



Restaurant



Supermarket



Convenience store



Bank



Bar



Jewelry store

Warranty Terms

POS-1561: **18~36 Month**

The standard warranty period is **18 months**, with an additional price of 5% to upgrade to a **2-year** warranty. If you need longer warranty, please contact sales for details

DOA: It is consistent with the existing terms of OCOM

Accessories: 2 ‰ of the total quantity
(Full set of accessories including motherboard, memory, hard drive, TP LCD adapter, power cord)