

PUNImare Androideeee POS Terminale con T hermal Etichetta e scontrino stampante

(M/N:POS -T2)

Caratteristiche:

1. **Deca-nucleo** Processore MT6797 Tri-Cluste-A72*2A53*8 2,3GHz
2. Termico incorporato ad alta velocità da 58 mm **ricevuta ed etichetta** Stampante
3. Standard **RAM da 3GB** ROM-x-16G
4. Altoparlante di grande volume incorporato
5. Modulo NFC integrato
6. **2 SIM** slot per schede
7. Supportoa USB di tipo C **ricarica rapida**
8. **6400 mAh rimovibile** grande capacità **cobalto puro** batteria
9. Lettore di codici a barre 1D e 2D e stampante per le impronte digitali per le opzioni

Specifica

Modello	- T2
Nome	5,5 pollici touchscreen capacitivo, sostenere la firma elettronica
Batteria	3.8 V/ 64 00mAh
Adattatore di alimentazione	Ingresso□100-240V , 50/60Hz ,1.5A Produzione□ 5 V CC /2 A
Interfaccia del caricatore	USB di tipo C
Schermo principale	Schermo tattile HD da 5,5 pollici visualizzazione
Risoluzione	720*1280 IPS
Prestazione	
processore	Processore Deca-core MT6797 Tri-Cluste-A72*2A53*8 2,3GHz
RAM	3 GB
Veloce	Flash da 16 GB
Comunicazione	2G/3G/ 4G
Sistema operativo	Android 8.0
Pulsante	Pulsante di accensione, pulsante di scansione , Pulsante del volume
Bluetooth	Bluetooth 4.0
WIFI	WIFI 802.11 b.g.n.ac
Stampante	Ricevuta termica da 58 mm ed etichetta Stampante
Rotolo di carta	Larghezza: 58 mm; Diametro: ≤40 mm
Scanner	5 Megapixel Decodifica della fotocamera , Scanner 2D (opzionale)
NFC	Supporta ISO/IEC 14443A&B, Mifare, felica card
Slot SIM	Sim*2 (predefinito) o Sim*1Sam*1 per opzione
Altoparlante	Altoparlante audio digitale
Impronta digitale	FBI/STQC Impronta digitale (Opzionale)
GPS o AGPS	Supporta GPS AGPS
MDM	Support
Accessori periferiche	

Accessori	USB Tipo C*1
	Ricarica adattatore*1
	manuale utente*1
Ambiente	
Temperatura di esercizio	0 a 40 gradi centigradi
Temperatura di conservazione	- 10 a 60 gradi centigradi
Umidità di lavoro	10%~80%
Umidità di stoccaggio	10%~90%

Dettagli del prodotto

Built-in MDM Control System



Fingerprint Security

Ministry of Public Security or FBI fingerprints (Optional)

70%

Sensitive
Ascension

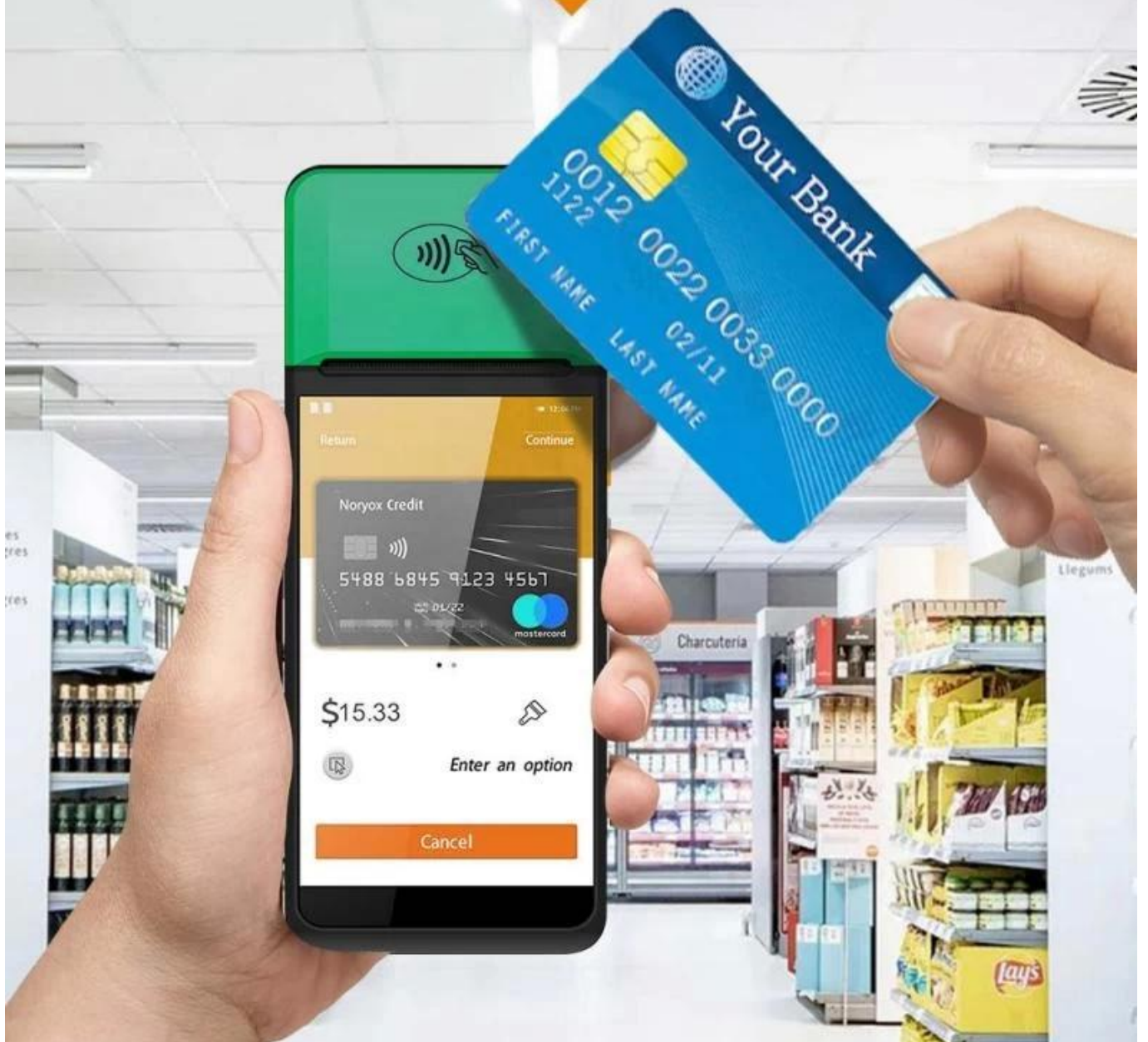


Fingerprint ID



NFC Contactless Card

NFC contactless card reader payment function

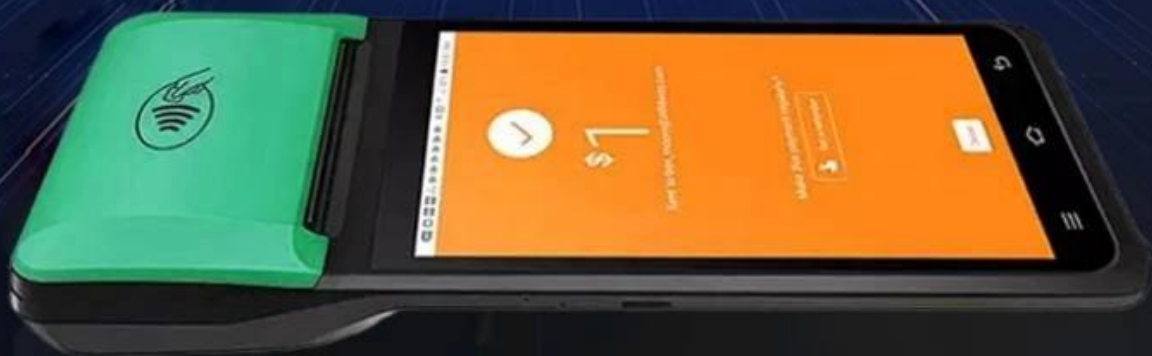


Double Frequency WFI

Double insurance of 4G high Speed network and dual-frequency WIFI network can ensure the real-time data communication in different using environment



2.4G 5G



Structure specification

SMART PRINTING



Simple construction Easy operation



Large Capacity Battery

Removable 6400mAh large capacity pure cobalt battery



Dimensions

SMART PRINTING



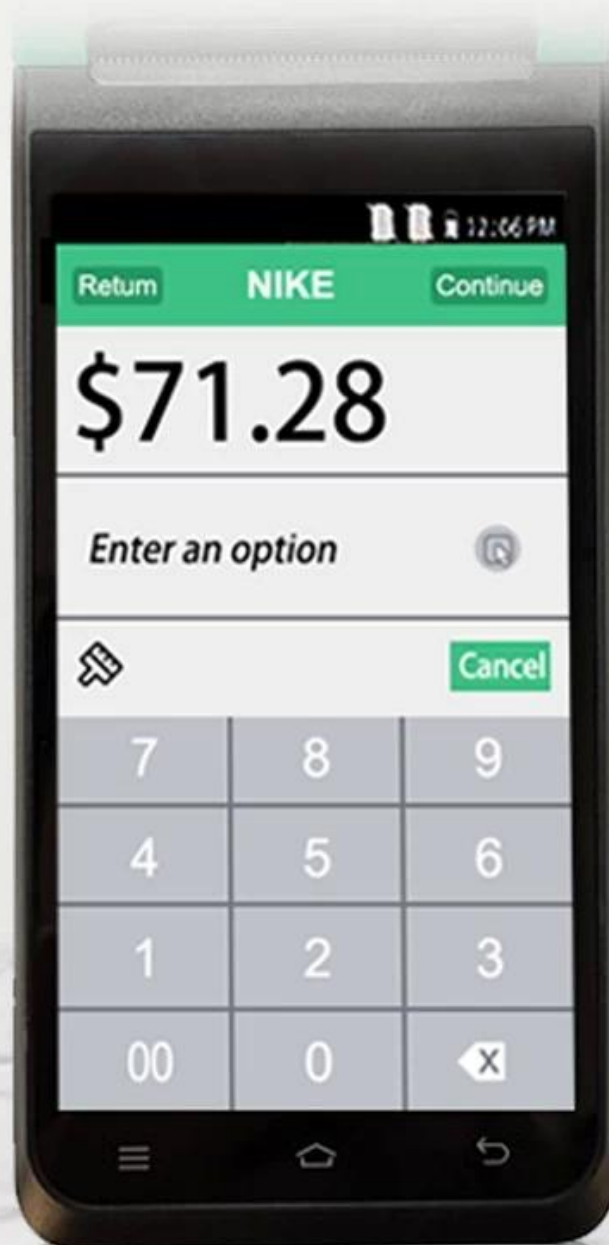
197*82*57.5mm



Manual measurement has slight errors and does not affect the use.

5.5-inch HD IPS Screen

720*1280 resolution, stable every pixel, allowing users to see more clearly



Strong Performance



OS

Android System



Memory

3GB RAM+16GB ROM

Support Download APP from Google Play Store

High Quality and Performance, Your reliable POS



Large paper bin Print more durable

Can accommodate 42mm diameter thermal paper to avoid frequent paper changes and improve printing efficiency.

58mm

Maximum
paper width

42mm

Maximum
paper diameter



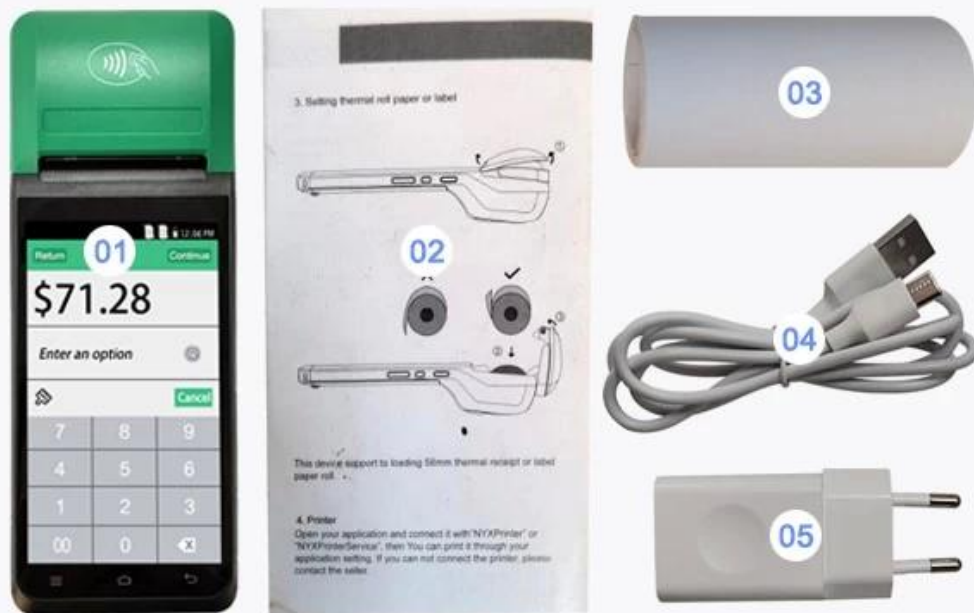
■ SMART PRINTING

Packaging accessories

SMART-PRINTING



Beautiful packaging, original accessories

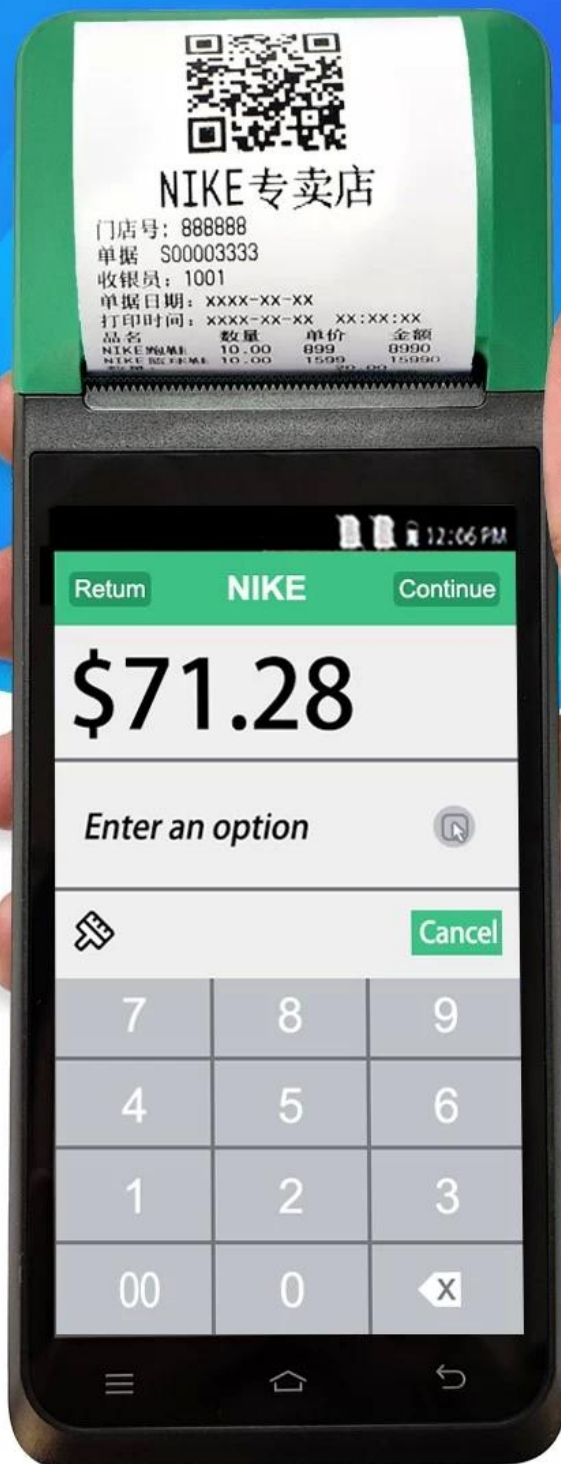


01 Machine 02 User Manual 03 Roller Paper

04 Type C Cable 05 Charging Adaptor

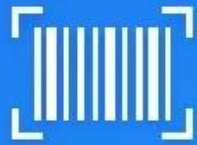
SMART Handheld POS Terminal

MULTI-PLATFORM AUTOMATIC PRINTING
easy to deal with a variety of working environment



5 Million Rear HD Camera

HD camera quickly identify barcodes QR codes
record important information
2D Barcode scanner for optional



Scan code



Photo



Video





Thermal Receipt Label Printing



Touch HD Screen



Multi-version Connection



5 Million Pixels



Large Volume Speaker



Large Capacity Battery



NFC Standard



CPU Deca-core

Multiple versions Connection options

Support full Net-com, Bluetooth, WIFI multiple versions of connection, Excellent experience

