

## 80mm hoge snelheid met Auto-cutter Pos Thermal Receipt Printer (Model: OCPP-804)

### Specificatie:

Afdrukmethode	Direct thermisch
Tekengrootte	ANK, FontA: 12 * 24dots, FontB: 9 * 17dots
Column capaciteit:	576dots / lijn of 512dots / line
Tekenset	PC347 (Standard Europe), Katakana, PC850 (meertalige), PC860 (Portugees), PC863 (Canadees-Frans), PC865 (Nordic), West-Europa, Grieks, Hebreeuws, Oost-Europa, Iran, WPC1252, PC866 (Cyrillisch # 2), PC852 (latin2), PC858, IranII, Lets, Arabisch, PT151 (1251)
Barcode	JUPC-A / UPC-E / JAN13 (EAN13) / JAN8 (EAN8) / CODABAR / ITF / CODE39 / Code93 / CODE128, QR code
Afdruksnelheid	260mm / sec
Ontvang buffer	64k bytes
NV Flash	128k bytes
Papierbreedte	79,5 ± 0,5 mm
MCBF (leven)	100km
Printing command	Compatibel met ESC / POS
Kassalade controle	DC 12-24V / 1A
Papierdikte	0.06-0.08mm
Snijder	Auto Cutter
Papierrol	79,5 ± 0,5 mm * φ83mm
Interface	Serial / parallel / USB
Bestuurder	Win 9X / Win ME / Win 2000 / Win 2003 / Win NT / Win XP / Win Vista / win 7 / Linux
Stroomvoorziening	DC24V / 2.5A
Power adapter ingang	AC 110V / 220V, 50 ~ 60 Hz; Output: DC 24V / 2.5A
Dimensie	200x145x137mm
Netto Gewicht	1.56kg

### Details van het product:



**80mm Thermal Receipt Printer  
with Auto-Cutter**  
**OCP-804**



**Product Picture**





## Features

**Simple but not easy**

Waterproof, oil proof, dustproof



Print head life: 100km



Can print QR code



USB + Serial + LAN together  
or USB, or Serial, or LAN, or Parallel



260mm/sec high printing speed



Print head life: 100km  
Compatible with EPSON ESC/POS



### All-round show





## Application Area

Food delivery, restaurant, Traffic Citation, Logistics, Transportation, Warehouse management, Delivery, Illegal Parking Ticket, Drugstore, Price Tag, Retail/Farm



## Parameter

<b>Printing method</b>	Direct thermal
<b>Character size</b>	ANK,FontA:12*24dots,FontB:9*17dots
<b>Column capacity:</b>	576dots/line OR 512dots/line
<b>Character set</b>	PC347(Standard Europe), Katakana,PC850(Multilingual), PC860(Portuguese), PC863(Canadian-French), PC865(Nordic), West Europe, Greek, Hebrew, East Europe, Iran, WPC1252, PC866(Cyrillic#2), PC852(Latin2), PC858, IranII, Latvian, Arabic, PT151(1251)
<b>Barcode</b>	JUPC-A/UPC-E/JAN13(EAN13)/JAN8(EAN8)/CODABAR/ITF/COD E39/CODE93/CODE128, QR code
<b>Printing speed</b>	260mm/sec
<b>Receive buffer</b>	64k bytes
<b>NV Flash</b>	128k bytes
<b>Paper width</b>	79.5±0.5mm
<b>MCBF(life)</b>	100km
<b>Printing command</b>	Compatible with ESC/POS
<b>Cash drawer control</b>	DC 12-24V/1A
<b>Paper thickness</b>	0.06-0.08mm
<b>Cutter</b>	Auto Cutter
<b>Roll paper</b>	79.5±0.5mm* 60mm

<b>Roll paper</b>	76.2x20.5mm φ80mm
<b>Interface</b>	Serial + USB + LAN
<b>Driver</b>	Win 9X/Win ME/Win 2000/Win 2003/Win NT/Win XP/Win Vista/win 7/Linux
<b>Power supply</b>	DC24V/2.5A
<b>Power adapter input</b>	AC 110V/220V, 50~60Hz; Output: DC 24V/2.5A
<b>Dimension</b>	200x145x137mm
<b>Net Weight</b>	1.56kg

## Paper Roll Installation

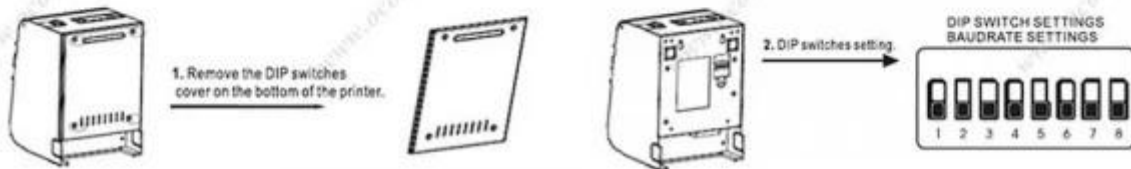


- A Open the printer cover.
- B Install the roller in the roll paper, and put them into the printer.
- C Pull out some paper outside the printer and then close the printer cover.
- D Close the top cover. Press the printer cover to avoid error position of roll paper.

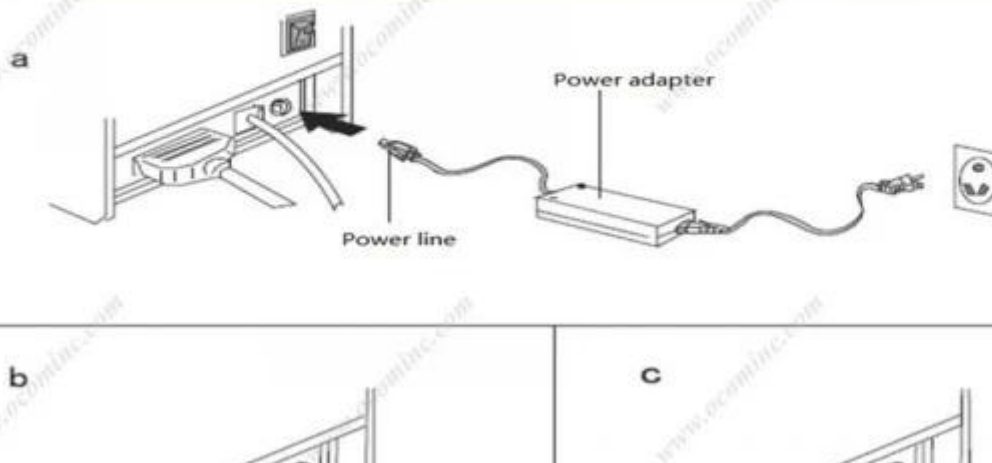


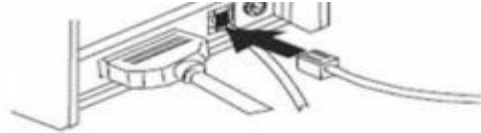
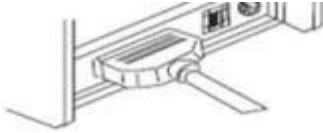
## Setting the Printing Mode(DIP switches):

The DIP switches are used to set the printer to perform various functions, such as cutter mode, character set, speed, beeper, print density and etc.



## Connection





- a. Plug the DC cord connector into the printer's power connector..
- b. Plug the data cable connector into the printer's interface connector.
- c. Plug the drawer cable into the drawer kick-out connector on the back of the printer next to the interface connector.

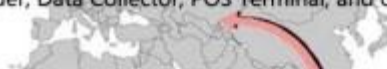
## Shipping and payment

1. Air, Sea, Express(DHL, FedEx, UPS, EMS, TNT and so on)
2. EXPRESS: around 3-7 working days to arrive
3. INTERNATIONAL AIR MAIL: usually around 2-4 days to arrive, will also depend on which destination port
4. By sea: depend on which destination port
5. T/T
6. Western Union
7. Escrow
8. L/C

## Company Profile



OCOM Technologies Limited is a professional supplier specialized in POS and Auto-ID applications. Our products portfolio covers Barcode Scanner, Barcode Printer, Thermal Printer, Dot Matrix Printer, Magnetic Card Reader, Data Collector, POS Terminal, and other IOT products.





We have FCC, CE, RoHS, and other certifications. We have sell our products to West Europe, North American, Africa, Asia-Pacific and other countries.

OCOM has professional teams including marketing, R&D, quality control, production and sales service. All of the sales representatives have 3 to 10 years experience in international trading, which help us to meet the customers' needs.

OCOM have been sticking to the quality system of ISO9001:2008. We conduct strict IQC, IPQC and OQC inspection in every industrial procedure. Based on our strong capacity, the normal lead time for main products is about 3 to 7 days even for bulk order.

You can find more information of us at: [www.ocominc.com](http://www.ocominc.com),

Together we quest for the best.



## Relevante documenten:

[\\*Specificatie](#)

[\\*IP Handmatig adres configureren](#)

[\\*Handleiding](#)

[\\* Driver voor alle Windows-systeem](#)

[\\*Driver voor Linux](#)

[\\*Printer Parameters instellen Gereedschap](#)

[\\*CD Bestanden](#)