

# HANdbediend Android POS Terminal met T hermaal Etiket en ontVangstbewijs Printer

(M/N:POS -T2)

## Funcities:

1. **Deca-kern** MT6797 Tri-Cluste-A72\*2A53\*8 2,3GHz-processor
2. Ingebouwde hoge snelheid 58 mm thermisch **ontvangstbewijs en etiket** printer
3. Standaard **3 NL RAM-geheugen** -x-16G ROM
4. Ingebouwde luidspreker met groot volume
5. Ingebouwde NFC-module
6. **2\*SIM** kaartsleuf
7. Ondersteuning voor USB type-C **snel opladen**
8. **Verwijderbare 6400 mAh** grote capaciteit **puur kobalt** accu
9. 1D&2D Barcodelezer en vingerprieter voor opties

## Specificatie

Model	- T2
Naam	5,5 inch capacitief touchscreen, ondersteuning van de elektronische handtekening
Accu	3.8 V / 64 00mAh
Oplader	Invoer□100-240V , 50/60 Hz ,1.5A Uitgang□ 5 V gelijkstroom /2 A
Lader-interface	USB-type C
Hoofdscherm	5,5 inch HD-touchscreen weergeven
Oplossing	720*1280IPS
<b>Prestatie</b>	
CPU	Deca-core MT6797 Tri-Cluste-A72*2A53*8 2.3GHz processor
RAM	3 GB
Flash	16 GB flitser
Communicatie	2G/3G/ 4G
Besturingssysteem	Android 8.0
Knop	Aan/uit-knop, scanknop ,Volumeknop
Bluetooth	Bluetooth 4.0
WIFI	WIFI 802.11 b.g.n.ac
Printer	Thermische bon van 58 mm en etiket Printer
Papieren rol	Breedte: 58 mm; Doorsnede: ≤40 mm
Scanner	5 megapixel Camera decoding , 2D-scanner (optie)
NFC	Ondersteuning van ISO/IEC 14443A&B, Mifare, felica-kaart
SIM-slot	Sim*2 (standaard) of Sim*1Sam*1 voor optie
Spreker	Digitale audioluidspreker
Vingerafdruk	FBI/STQC Vingerafdruk (Optioneel)
GPS of AGPS	Ondersteuning van GPS AGPS
MDM	Steun
<b>Randapparatuur</b>	

Accessoires	USB-type C*1
	Opladen adapter*1
	gebruikershandleiding*1
<b>Omgeving</b>	
Bedrijfstemperatuur	0 tot 40 graden Celsius
Bewaar temperatuur	- 10 tot 60 graden Celsius
Werkvochtigheid	10%~80%
Opslag vochtigheid	10%~90%

## Productdetails

# Built-in MDM Control System



# Fingerprint Security

Ministry of Public Security or FBI fingerprints (Optional)

70%

Sensitive  
Ascension

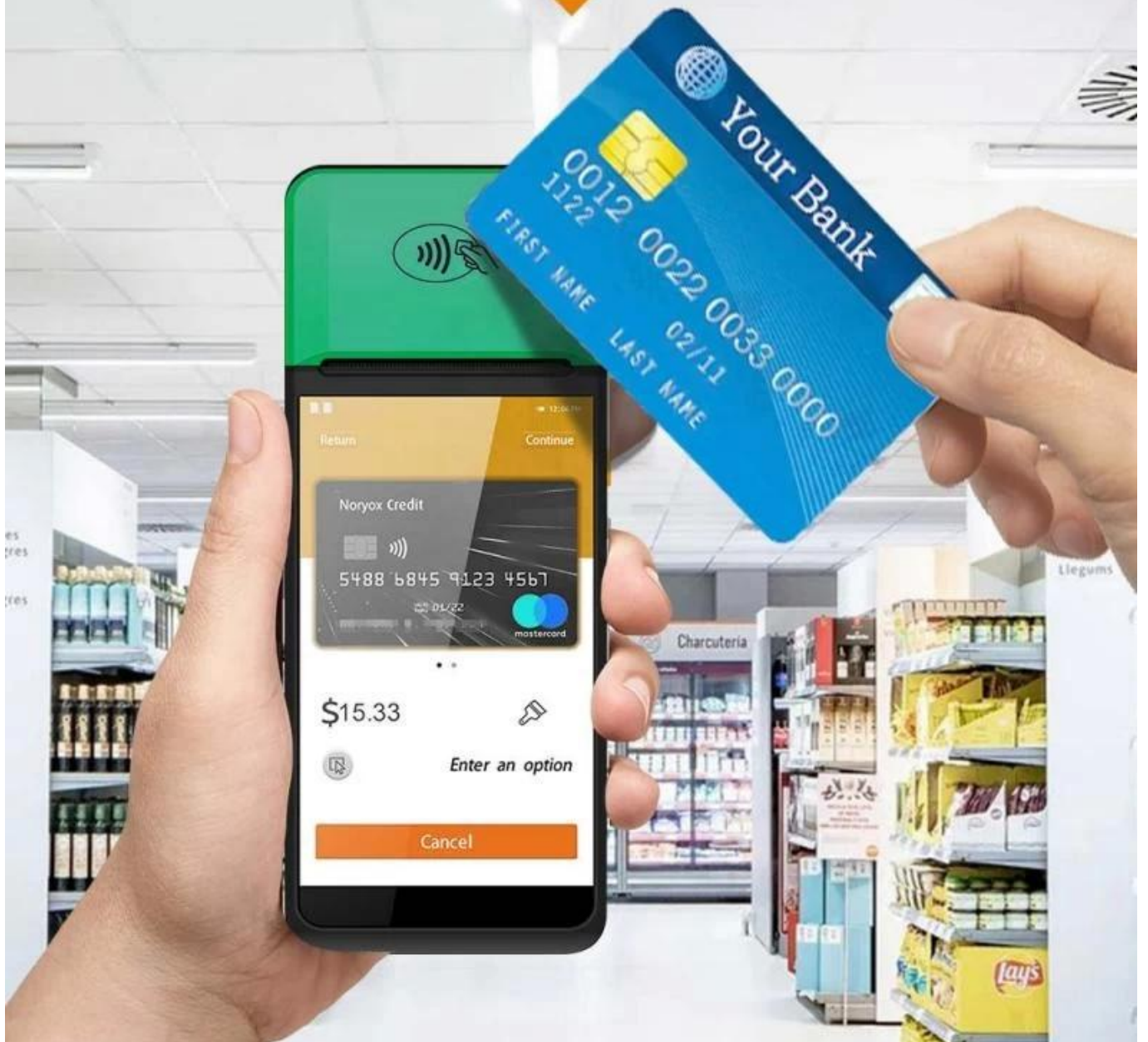


Fingerprint ID



# NFC Contactless Card

NFC contactless card reader payment function



# Double Frequency WFI

Double insurance of 4G high Speed network and dual-frequency WIFI network can ensure the real-time data communication in different using environment



2.4G 5G



# Structure specification

SMART PRINTING



Simple construction Easy operation



# Large Capacity Battery

Removable 6400mAh large capacity pure cobalt battery



# Dimensions

SMART PRINTING



197\*82\*57.5mm

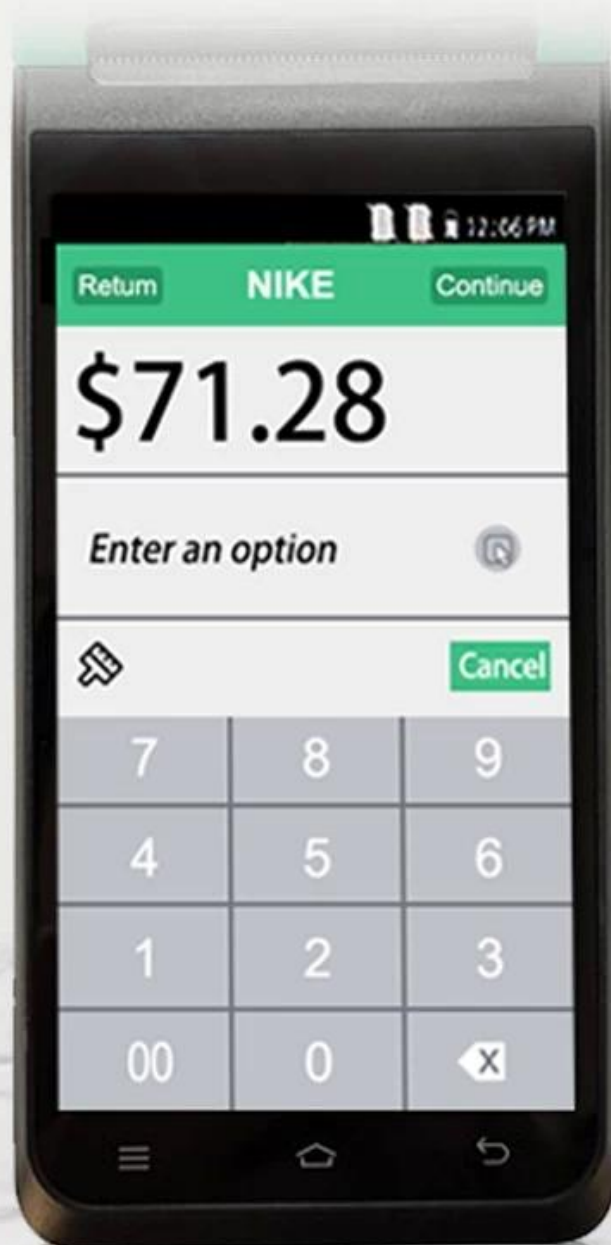


Manual measurement has slight errors and does not affect the use.



# 5.5-inch HD IPS Screen

720\*1280 resolution, stable every pixel, allowing users to see more clearly



# Strong Performance



**OS**

Android System



**Memory**

3GB RAM+16GB ROM

# Support Download APP from Google Play Store

High Quality and Performance, Your reliable POS



# Thermal Receipt / Label Printing

Built-in high speed 58mm thermal receipt and label printer



# Large paper bin Print more durable

Can accommodate 42mm diameter thermal paper to avoid frequent paper changes and improve printing efficiency.

**58mm**

Maximum  
paper width

**42mm**

Maximum  
paper diameter



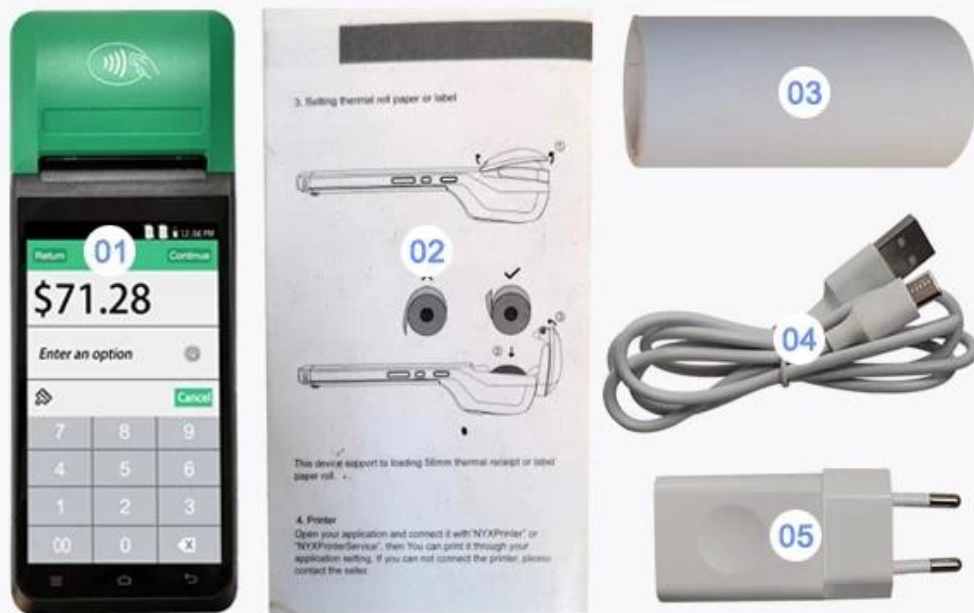
■ SMART PRINTING

# Packaging accessories

SMART-PRINTING



Beautiful packaging, original accessories

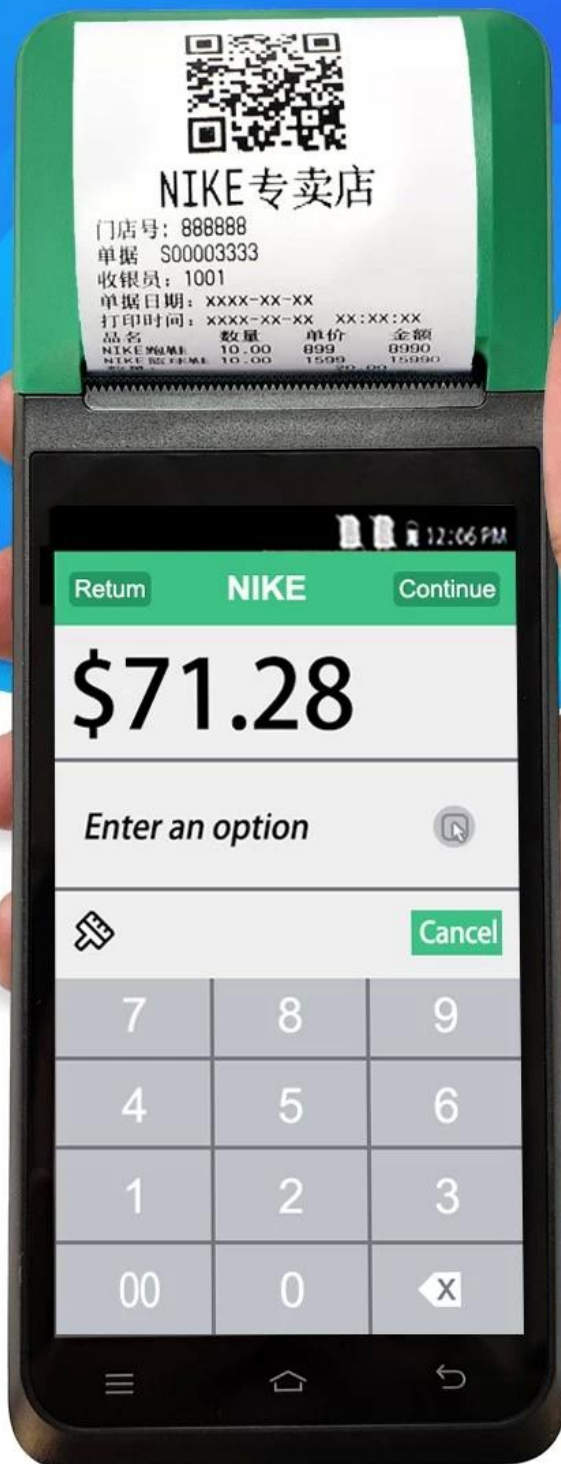


01 Machine 02 User Manual 03 Roller Paper

04 Type C Cable 05 Charging Adaptor

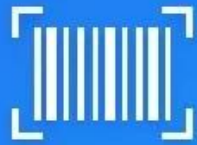
# SMART Handheld POS Terminal

MULTI-PLATFORM AUTOMATIC PRINTING  
easy to deal with a variety of working environment



# 5 Million Rear HD Camera

HD camera quickly identify barcodes QR codes  
record important information  
2D Barcode scanner for optional



Scan code



Photo



Video







Thermal Receipt Label Printing



Touch HD Screen



Multi-version Connection



5 Million Pixels



Large Volume Speaker



Large Capacity Battery



NFC Standard



CPU Deca-core

## Multiple versions Connection options

Support full Net-com, Bluetooth, WIFI multiple versions of connection, Excellent experience



Support WIFI

Support Bluetooth 4.0

2G/3G/4G communication for optional

