

## Wyświetlacz klienta VFD z podwójną linią znaków 20X2

(Model nr: VFD220A)

### **Funkcje:**

- l Podwójne linie 20 \* 2 wyświetlanie znaków VFD;
- l Obsługa 13 języków krajów;
- l Wysokość słupa jest regulowana;
- l 360 stopni rotacji angle;

### **Dane techniczne:**

- l Podświetlany wyświetlacz fluorescencyjny o wysokiej jasności zapewnia doskonałą widoczność przy szerokim kącie widzenia.
- l Dostępne dla znaków o wysokości 9 mm.
- l 40 znaków w 20 kolumnach po formacie 2-liniowym.
- l Trzydzieści zestawów znaków międzynarodowych oraz jeden zestaw znaków definiowanych przez użytkownika pozwala na całkowitą elastyczność czcionek ekranowych.
- l Łatwe programowanie za pomocą poleceń sekwencji Escape.
- l Emulacja zestawów poleceń Aedex, Epson i DSP800.
- l Wyświetlacz może się obracać i przechylać pod różnymi kątami.
- l Regulowana wysokość wyświetlacza.
- l Zasilanie może pochodzić z systemu, a wspornik i zestaw kabli są dostarczane w typowej konfiguracji.
- l Adaptery AC w różnych konfiguracjach dla wszystkich napięć przemiennych.

**Porozumiewanie się**

Berło:	Port szeregowy (RS-232, zasilany przez dc lub USB), USB (Virtual COM)
Szybkość transmisji:	9600bps
Jasność:	2000cd
Bit danych:	8 bitowy
Bit stopu:	1bit
Sygnal uzgadniania:	Nie
Elektryczny:	Mocą komputera hosta DC12 (duży interfejs 4 ps)
Pokaz:	VFD Jasno niebiesko-zielony wyświetlacz fluorescencyjny
Wyświetl znaki:	2 linie x 20 znaków / wiersz, 40 znaków, 5 x 7 punktów
Obszar wyświetlania:	160 mm (szer.) X 23,8 mm (wys.)
Rozmiar postaci:	wysoki 11 mm x szeroki 7 mm
MTBF:	25 000 godzin
Wymiary	
Wymiary panelu:	80 (H) x 225 (W) x37 (D) mm
Wymiary pomocnicze:	Długie wsparcie: 480 mm (zawiera bazę) Krótkie wsparcie: 225 mm (zawiera bazę) Wymiary podstawy: 185 (L) x95 (w) x25 (H) mm
Kąt przesunięcia:	45 °, może zapewnić wygodę i dostosować kąt widzenia
Waga:	1,2 kg (brutto)
Środowisko	
Temperatura robocza:	-20 ~ 70 A18
Temp. Pamięci;	-40 ~ 80 A19
Wilgotność pracy:	10 ~ 85%
Wilgotność przechowywania:	10 ~ 90%
Zestaw poleceń	
Przyjęcie międzynarodowego standardowego dowództwa ogólnego ESC / POS, może być używane w środowisku DOS lub Windows System, Nie wymaga żadnego sterownika, Tylko zgodnie z ustawieniami formatu seryjnego wysyłania danych może pokazywać zawartość.	
Z funkcją otwierania szuflady na gotówkę Wszystkie kierunki regulowane.	



# Handheld Image Scanner for 1D/2D Barcode

## OCBS-2008



### Product Picture



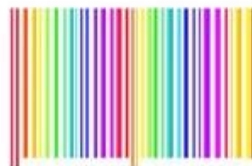
### Features

**Reliable with good price**

- High performance imaging technology;
- Omni-directional scanning, easy to scan;



- 4mil excellent scanning accuracy ;
- Can read the barcode on the screen and color barcode;



Multi special function setting supported;  
SDK/API Available;



Multi interfaces optional;  
Stand for option.



## Application place



Bookstore



Supermarket



Pharmacy



Warehouse



Clothing store



Restaurant



## Parameter

Function		
Light source	White LED	
Beep	Supported	
Stand	Optional	
Indicator	Green LED, beep	
Scan performance		
Sensor	CMOS	
Resolution	640*480,256 gray levels	
Maximum decoding speed	13mil UPC 40cm/s	
Reading angle	horizontally 50 deg; vertically 20 Deg	
Precision	≥4mil	
Decode capability	1D	UPC-A, UPC-E, UPC-E1, EAN-13, EAN-8, ISBN (Bookland EAN), ISSN, Code 39, Code 39 full ASCII, Code 32, Trioptic Code 39, Interleaved 2 of 5, Industrial 2 of 5 (Discrete 2 of 5), Matrix 2 of 5, Codabar (NW7), Code 128, UCC/EAN 128 (GS1-128), ISBT 128, Code93, Code 11 (USD-8), MSI/Plessey
	2D	PDF417, MicroPDF417, QR Code, DataMatrix, Han Xin Code, Aztec Code, GS1 Composite
Depth of field	Code 39(5mil): 50mm~120mm Code 39(10mil): 25mm~250mm UPC/EAN (13mil): 20mm~320mm Data Matrix(7.5mil): 63mm~150mm PDF417(6.6mil): 62mm~145mm	
Sensitivity	Inclination ±45° @0°Roll and 0°Skew Rotation ±30° @0°Pitch and 0°Skew Deflection ±45° @0°Roll and 0°Skew	
Electrical		
Interface	USB,USB COM(virtual serial port)	
Input Voltage	3.3v~5v DC	
Standard Power	2.0w (400mA)	
Max Power	2.5w (450mA)	
DC adapter	Max 5.5V 1A	
LED CLASS	Class I	
EMC Test	FCC part15,IEC60825-1,EN55022 Class B	
User Environment		
Operate Temperature	-20 deg C ~ +60 deg C (-4 Deg F to 144 deg F)	
Storage Temperature	-30 deg C ~ +70 Deg C (-22 Deg F to 158 deg F)	
Humidity	5% - 95%(non- condensation)	
Drop resistance:	1.5m (5.0ft) drops to concrete	
IP class	IP54	
Light intensity	Working: sun lights, fluorescent lights	
Physical		
Dimensions	156*68*83mm	
Weight	195 g (without stand)	
Package dimension	48*36*47CM (20pcs with stand 13.5KG)	
	48*39*52CM (30pcs without stand 15KG)	

**Production Capacity:**

✓ Indicates information has been verified onsite by a certification specialist

### Production Capacity

Verified	Product Name	Production Line Capacity	Actual Units Produced(Previous Year)
✓	Thermal Printer	40,000 Sets / Month	250,000 Sets
✓	Dot Matrix Printer	15,000 Sets / Month	10,000 Sets
✓	Bluetooth Printer	30,000 Sets / Month	20,000 Sets
✓	Barcode Scanner	40,000 Sets / Month	20,000 Sets
✓	POS Machine	5,000 Sets / Month	10,000 Sets
✓	Magnetic Card Reader and Writer	45,000 Sets / Month	50,000 Sets

Verified by TUV on 2013.7.15

## Quality Assurance:



OCOM is dedicated to providing most cost-effective products and services with highest quality that will meet customers' satisfaction.

Since the establishment, OCOM has been sticking strictly to the standard and requirements of ISO9001: 2000 in the processes of research, design, manufacturing and services. OCOM's products have passed CE, FCC, TUV, RoHs and other certifications.

We make strictly IQC, IPQC and OQC inspection per industrial standard. All the products must pass 24-48 hours aging test before shipment. Some designated models can have as long as 24 months warranty.

## Test Equipments:

✓ Indicates information has been verified onsite by a certification specialist

### Test Equipment and Facilities

Verified	Machine Name	Brand & Model No.	Quantity
✓	Ageing Tester	No Information	6
✓	Withstand Voltage Tester	CC2670A	1
✓	Oscilloscope	TBS1102	1
✓	DC Power Supply	PS-305DM	6
✓	Digital Torque Meter	HP100	1
✓	Calliper	GUANGLU	2
✓	Multi-meter	VC890D	7
✓	Test Computer	No Information	13

Verified by TUV on 2013.7.15

## Certification:



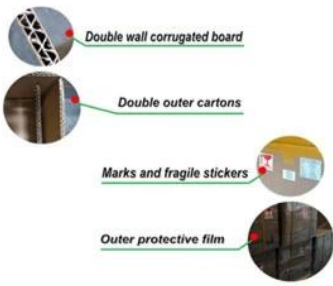


## Warranty and After Sales:



- ▶ All products' warranty are not less than 12 month, some models even up to 24 months warranty.
- ▶ Spare parts will be provided for mass orders for customers' local maintenance.
- ▶ Any product found to be defective within 30 days of shipment shall be deemed Dead on Arrival (DOA). DOA products will be advance replaced and shipped via express.
- ▶ Have distributors or authorized agents in the main market who can provide local repair and replacement services.
- ▶ Professional CRM management insures fast respond for customer's enquiries and orders tracking.
- ▶ Sales with many years experience in foreign trade, proficient in foreign languages and strong sense of responsibility.
- ▶ 7\*24 hours online, responds with 12 hours in working days, and within 24 hours for rest days.

## Packing and Shipment:



## Payment:



secure payment



## Customers Reference

Over the years, OCOM keep efforts on marking "OCOM" as an internationally recognized brand, and we have established goods relationship with our customers and have friendly communication with each other.



## Company Profile



### TRADE ASSURANCE

- 100% money refund for Late shipment & Quality problem
- Guarantee on-time delivery
- Third-party pre-shipment quality inspection (Optional)
- No transaction commission charged
- The HIGHEST assurance amount guaranteed by alibaba in the Auto-ID and POS industry .



OCOM Technologies Limited is a professional supplier specialized in POS and Auto-ID applications. Our products portfolio covers , Thermal Printer, Barcode printer, Dot Matrix Printer, Barcode Scanner, Magnetic Card Reader, Data Collector, POS Terminal, and other IOT products.



We have FCC, CE, RoHS, and other certifications. We have sell our products to West Europe, North American, Africa, Asia-Pacific and other countries.

OCOM has professional teams including marketing, R&D, quality control, production and sales service. All of the sales representatives have 3 to 10 years experience in international trading, which help us to meet the customers' needs.

OCOM have been sticking to the quality system of ISO9001:2008. We conduct strict IQC, IPQC and OQC inspection in every industrial procedure. Based on our strong capacity, the normal lead time for main products is about 3 to 7 days even for bulk order.

You can find more information of us at: [www.ocominc.com](http://www.ocominc.com),

Together we quest for the best.





## Why you choose us?



## Contact us

**Any queries, please contact us immediately, big surprise is waiting for you.**

**Sales Center:**

Address: Unit701, Block 14, Zhongxing Industrial Park, Chuangye Road, Nanshan District, Shenzhen 518054, China

Website: [www.ocominc.com](http://www.ocominc.com) [www.possolution.com.cn](http://www.possolution.com.cn);

E-mail: [ocom@ocominc.com](mailto:ocom@ocominc.com), [info@possolution.com.cn](mailto:info@possolution.com.cn) ;

Tel: +86.755.86053207 ext 800;

Fax: +86.755.86053207 ext 868;

QQ: 2485890637, 190852203;

Wechat: szocominc, hj34924238;

Whatsapp: 008613352932860;

