

## 15.6-inch Windows/Android Die-cast Aluminum Touch POS Terminal

(M/N: POS-1561)

OCOM POS-1561 POS terminal has aluminium alloy shell and base,It has intel Celeron and intel core I series CPU for option. it has rich I/O interfaces to be connected to more external devices.

### Features:



Good heat dissipation system make POS work well in harsher environment;

Super thin machine body and stylish design improve your higher profile;

Cables management make cashier desk more tidier and save much space for use;

Supports "One Line connect" secondary screen;

More scientific separated structure for easy maintenance and disassembly;

Double folding structure base make package smaller and save much cost for shipping;

Flexible base allows POS to be placed in more ways and suitable for different counters.

## Specification

Model	POS-1561-W	POS-1561-A
Name	15.6 inch touch POS terminal	
Housing material	Aluminium alloy Plus ABS	
Display		
Main screen	15.6 inch touch screen monitor	
Resolution	1920*1080	
Brightness	250cd/m <sup>2</sup>	
View angle	Horizon: 170, Vertical: 170	
Touch screen	Multi-point projected G+G capacitive touch	
Sub-display	11.6 inch display W/ or W/o touch function for option, default 1366*768, 1920*1080 for option	
MSR	3-track card reader for option	
Speaker	Built-in 4ohm/3W speaker*1	
Performance		
Motherboard	Intel Celeron J6412, 2.0GHz or Celeron J4125, intel core I3 / I5 11th CPU for option	Rockchip series RK3568, quad core 2.0G, RK3588 for option
System Memory	1*SO-DIMM DDR4 slot, support 2400-3200mHZ, 4GB /8GB /16G for option	On board DDR4 4GB, 8G /16G for option
Storage device	64GB M.2 SSD or higer, up to 512GB	on board 32GB EMMC 64GB/128GB for option
LAN/WLAN	10/100/1000Mbps, Realtek RTL8111F Lan chip built in Mini PCI-E slot, support embedded WIFI module	10/100/1000Mbps, Realtek RTL8111F Lan chip, Support Wi-Fi 802.11b/g/n, BT3.0/BT4.0
Operating System	Support Windows 10/11	Android 11
Connectivity		
External I/O port J6412	Power button *1	
	12V DC in jack *1	
	LAN: RJ-45 *1, USB *8, COM *2, HDMI *1	
	Line out&MIC in 2in1 JACK *1	
	Customized Type C port for second display (optional)	
External I/O port RK3568	Power button *1	
	12V DC in jack *1	
	LAN: RJ-45 *1, USB *6, COM *1	
	RJ11 for cash drawer *1, TF card slot *1, SIM card slot *1	
	Line out *1, MIC in *1	
	Customized Type C port for second display (optional and coming soon)	

Environment	
Operating temperature	0 to 50 degrees centigrade
Storage temperature	-20 to 60 degrees centigrade
Working humidity	10%~90% No condensation
Storage humidity	10%~90% No condensation
Package	
Weight	Net: 6.0 Kg, Gross: 7.23Kg
Package with foam inside	436*400*166mm
Accessories	
Power adapter	110-240V/50-60HZ AC power input, DC12V/5A output adaptor
Power cable	Power cable plug compatible with USA /EU / UK etc and customized available
Other	
Compliance	FCC Class A/CE Mark/LVD/CCC

# OCOM New Products

## 15.6 Inches Die-cast Aluminum Touch POS Terminal

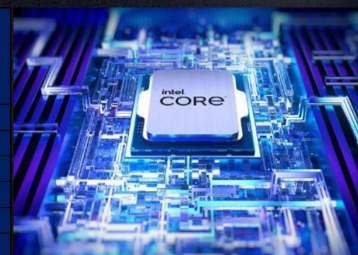


## 25mm Ultra-thin Body, Die-cast Aluminum Shell

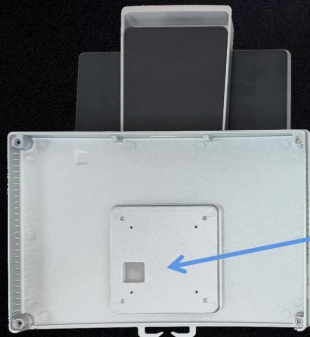


## Using "Seavo" Motherboard, Equipped with Intel High-end Processor

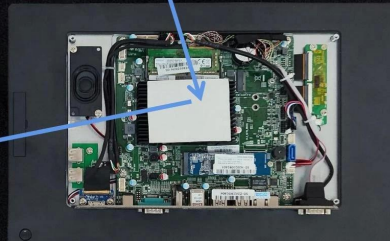
Item	Intel Celeron J4125 @ 2.00GHz	Intel Celeron J6412 @ 2.00GHz (Standard)	Intel Core i3-1115G4 @ 3.00GHz	Intel Core i5-1135G7 @ 2.40GHz
Socket Type	FCBGA1090	FCBGA1493	FCBGA1449	BGA1526
CPU Class	Desktop	Mobile/Embedded	Laptop	Laptop
Clockspeed	2.0 GHz	2.0 GHz	3.0 GHz	2.4 GHz
Turbo Speed	Up to 2.7 GHz	Up to 2.6 GHz	Up to 4.1 GHz	Up to 4.2 GHz
# of Physical Cores	4 (Threads: 4)	4 (Threads: 4)	2 (Threads: 4)	4 (Threads: 8)
Cache	L1: 224KB, L2: 4.0MB, L3: 0MB	L1: 256KB, L2: 1.5MB, L3: 4MB	L1: 160KB, L2: 2.5MB, L3: 6MB	L1: 320KB, L2: 5.0MB, L3: 8MB
TDP	10W	10W	15W	15W
Yearly Running Cost	\$1.83	\$1.83	\$2.74	\$2.74
Other	Intel UHD Graphics 600	Intel UHD Graphics for 10th Gen Intel Processors	Intel UHD Graphics for 11th Gen Intel Processors	Intel Iris Xe Graphics
First Seen on Chart	Q1 2020	Q3 2021	Q4 2020	Q3 2020
# of Samples	478	84	1416	5605
CPU Value	0	71.4	21.8	31.9
Single Thread Rating	1165	1381	2650	2693
CPU Mark	<b>2963</b>	<b>3853</b>	<b>6118</b>	<b>9845</b>



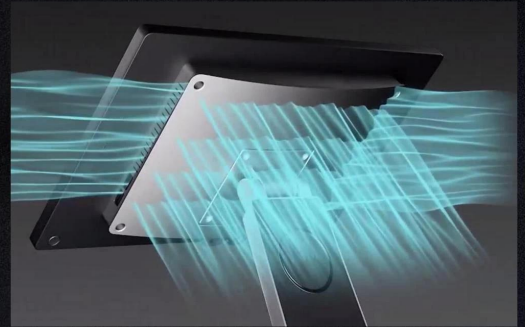
The scientific heat dissipation design allows the POS machine to have good heat dissipation performance and can still work normally even at an ambient temperature of 50 degrees Celsius.



The heat dissipation silicone grease is attached to the CPU heat sink.



And the heat dissipation silicone grease is adhered to the die-cast aluminum shell to quickly transfer heat.



## More scientific layout structure makes the POS machine maintenance easier.

Tips: The mainboard of POS-1561 is installed behind the screen. When the casing is disassembled, the stand and the casing are completely separated, and the screen cables will not be damaged during disassembly.

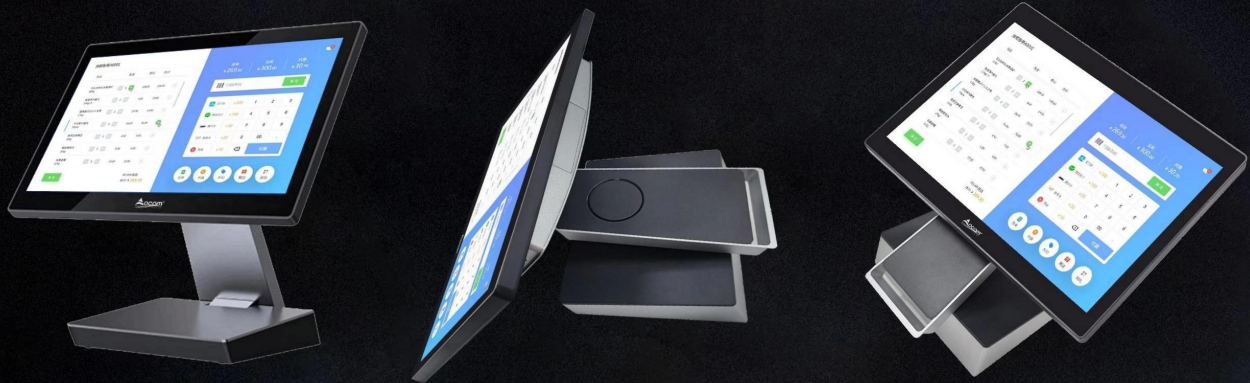


**Other Model**

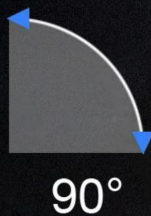


**POS-1561**

## 3 Placement Methods, Suitable for Various Counters



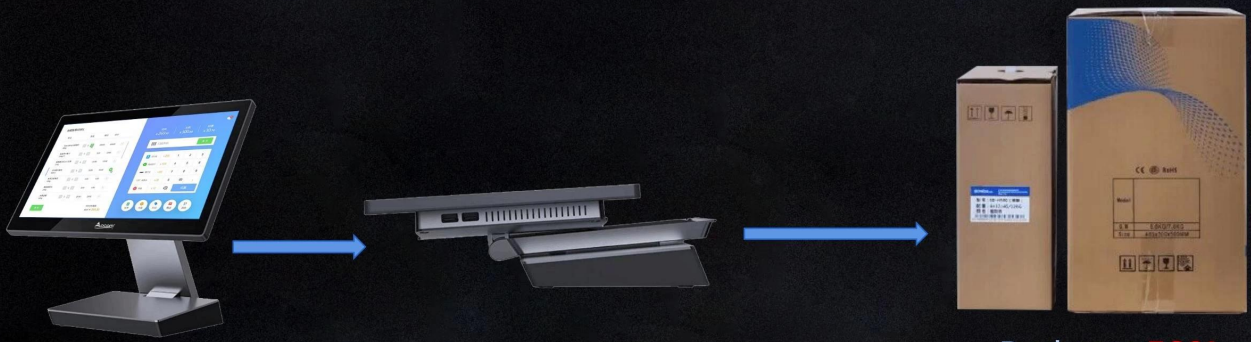
Two types of wall-mounting methods to enrich the application scenarios.



Cables management make cashier desk more tidier and  
save much space for use



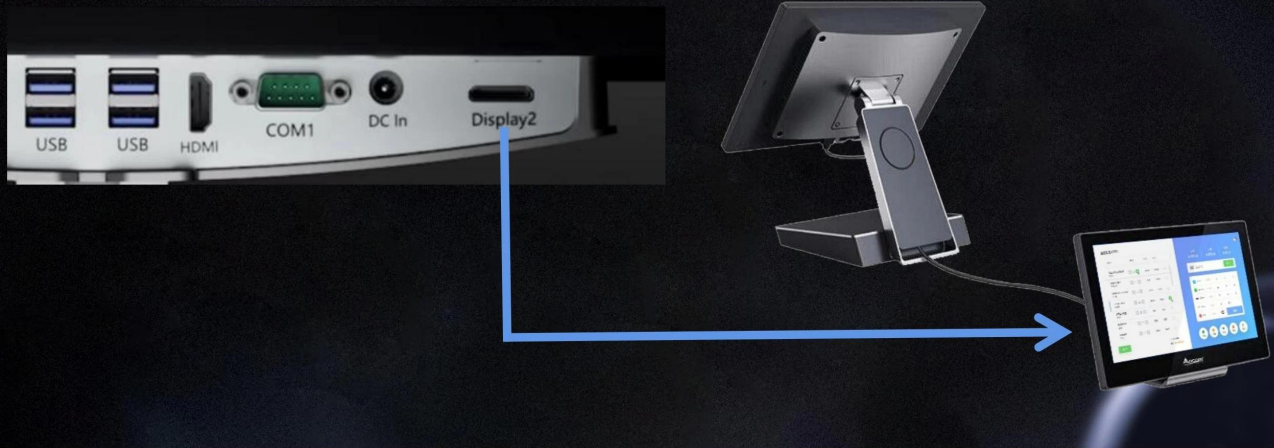
Double Folding Shaft Reduces Packaging  
Volume By 50% !



Reduces **50%**

Supports "One Line Communication" secondary screen, easy to assemble

Tips: One line can solves Power supply + Display Signal + Touch function at the same time



Two way to installation 2nd screen



Suitable for regular  
counters



Suitable for high and  
low counters



## Specifications



### OS

Windows 10/11  
Android 11



### Processor

Intel Celeron J4125/J6412  
Intel core i3-1115G4  
Intel core i5-1115G7  
Rockchip RK3568/RK3588



### Memory

DDR4 4GB/8GB/16GB



### Storage device

64G/128G/256G/512G SSD(Windows)  
32G/64G/128G eMMC(Android)



### Main screen

15.6" LCD (1920\*1080)  
16.9" Multi-point projected G+G capacitive touch



### Sub-display

15.6"/11.6"(POS-1561)  
9.7"(POS-1518)  
Touch function for option



### Options

MSR



### Housing material

Aluminium alloy Plus ABS  
Black+Silver



### Environment

Operating temperature: 0°C - 50°C  
Storage temperature: -20°C - 60°C



### Size (W\*H\*D)

Product size: 218\*339\*188(mm)  
Packaging size: 440\*165\*400(mm)



### Weight

Net: 5.6kg  
Gross: 7.23kg



### Installation

Desktop type  
Wall mounting type

## I/O Interface Diagram

Rich I/O interfaces, ultimate scalability



J6412

I3-1115G4

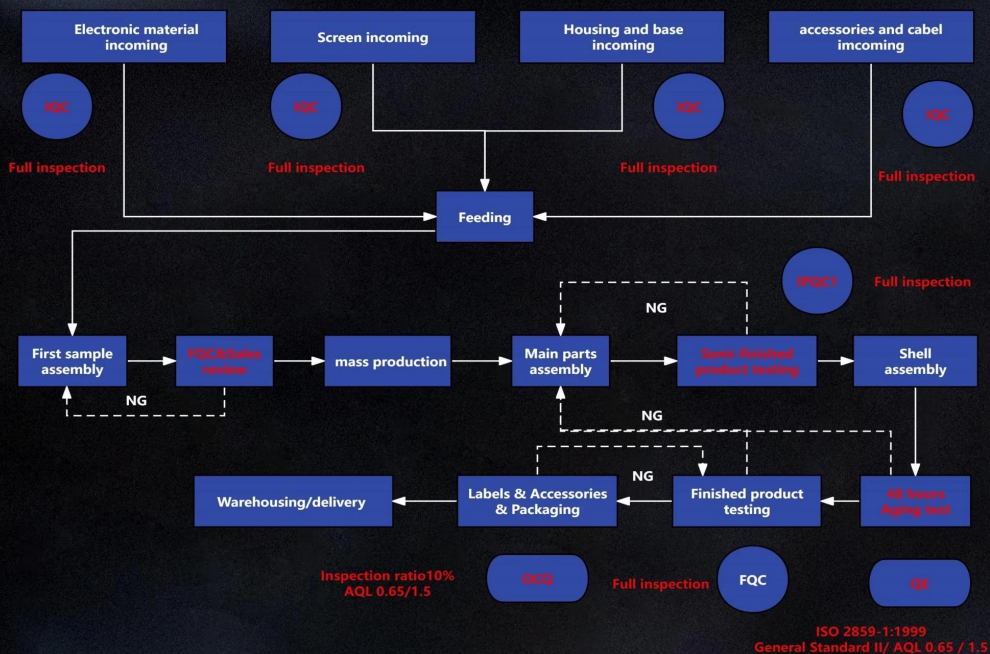
I5-1135G7

I7-1165G7

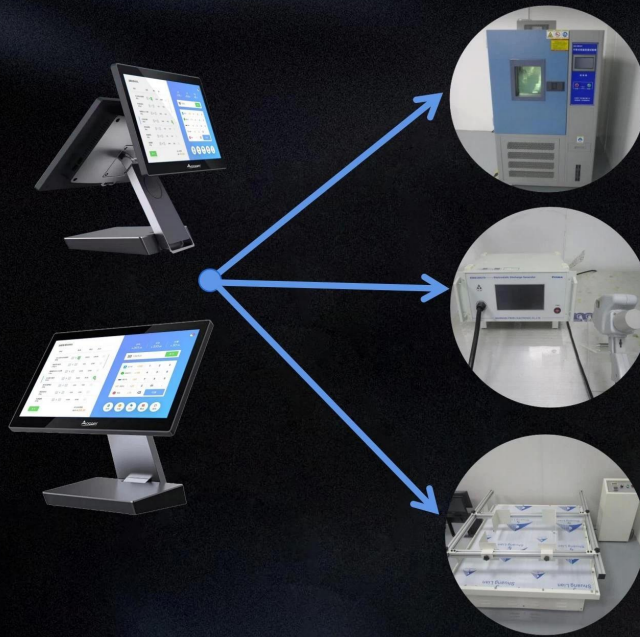
# Function Options



## Quality Control



## Reliability Testing Equipment



### Consistent Temperature And Humidity Chamber

By adjusting the temperature in the thermostat to simulate the use environment from -10 degrees Celsius to 55 degrees Celsius, test the reliability of the POS machine in high and low temperature environments.

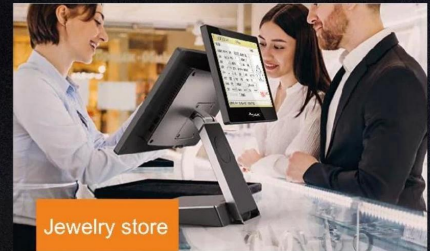
### Electrostatic Discharge Generator

Use Electrostatic Discharge Generator to simulate tip discharge and test the POS machine's ability to protect against static electricity during air discharge and contact discharge.

### Transport Vibration Testing Machine

Use the Transport Vibration Testing Machine to simulate vibrations during transportation and monitor the firmness of the connectors throughout the POS machine and the rationality of the internal structure.

## Application Areas



# Warranty Terms

POS-1561: **18~36 Month**

The standard warranty period is **18 months**, with an additional price of 5% to upgrade to a **2-year** warranty. If you need longer warranty, please contact sales for details

DOA: It is consistent with the existing terms of OCOM

Accessories: 2 % of the total quantity  
(Full set of accessories including motherboard, memory, hard drive, TP LCD adapter, power cord )