

Model	POS-1566-W
Name	15.6 inch Windows touch screen POS terminal
Main screen	15.6 inch touch screen monitor
Resolution	1366*768, 1920*1080 for option
Brightness	250cd/m ²
View angle	Horizon: 160; Vertical :150
Touch screen	Multi-point projected G+G capacitive touch
Sub-display	11.6inch display W or W/o touch function, resolution 1366*768
Customer display	2*20 VFD mounted to back cover for option
Performance	
Motherboard	Intel Core I5 4 th CPU, other CPU need to be customized
System Memory	2*SO-DIMM DDR3L 1333/1600MHz 4GB , up to 16GB
Storage device	M SATA SSD 128GB or higher, up to 512GB
Audio	On board Real-tech chip
LAN	10//100/1000Mbps, 1*Realtek RTL8111 LAN chip built in Mini PCI-E slot, support embedded WIFI module
Optional WIFI&BT	2.4G&5G WIFI ,BT 5.0 supported for option
Speaker	4ohm/2w*1
Operating System	Support win10 /win11
Connectivity	
External I/O port (I5 4 th)	power button*1
	12V DC in jack*1
	LAN:RJ-45*1
	2*USB3.0□4*USB2.0
	COM(RS232) * 1
	1*HDMI
	Audio out*1□1*Mic-in
Package	
Weight	Net 3.5kg(without power adaptor and power cord)
Package with foam inside	470*180*400mm/4.6kg
2 in1 box	485*365*405mm/10kg
Environment	
Operating temperature	0 to 40 degrees centigrade
Storage temperature	-10 to 60 degrees centigrade
Working humidity	10%~80% No condensation
Storage humidity	10%~90% No condensation
Accessories	
Power adapter	100-240V/50-60HZ 1.5Amax AC power input ,DC12V/5A output adaptor
Power cable	Power cable plug compatible with USA /EU / UK etc and customized available

Ultra-Slim Design, Aesthetic Excellence

Only 10.5mm thick, ultra-thin bezel design



Compare with the thickness
of iPhone 16 Pro

Superior Visuals Precision at Your Fingertips

Brand new 15.6-inch BOE original screen, guaranteed materials



Modular Design Strong Customization Capability

With secondary screen



With one line connection 2nd screen



With MSR or MSR+NFC



With customer display



With MSR+ibutton or MSR+NFC+ibutton



● 15.6-inch POS System

Model: POS-1566



Windows



Android

Detachable Base, Shipping Cost Savings

Detachable assembly, reducing product size and saving transportation costs



Packaging Accessories

Beautiful packaging, original accessories



01 Machine 02 Power adaptor 03 Power cord

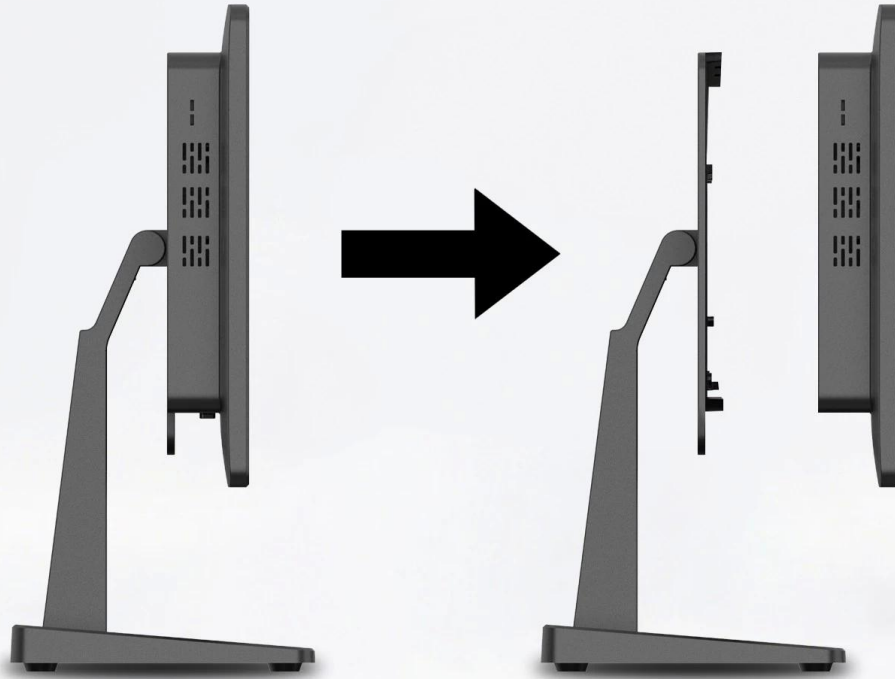
Flexible&Adaptable, Simple Connectivity

Single-line connection, easily pluggable and transformable



More Scientific Layout Structure

Integrated screen and motherboard design, easy to maintain



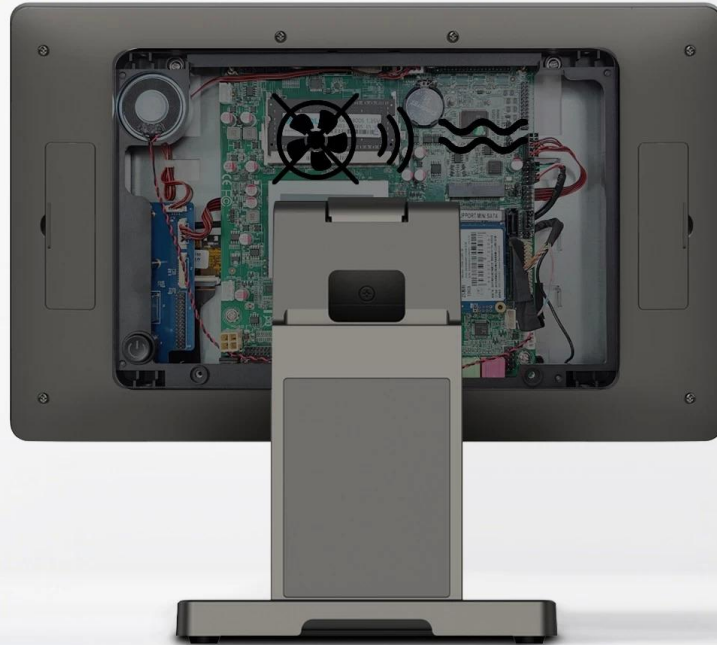
Magnetic Hidden Wire Design Neat Appearance

Cables management make cashier desk more tidier



Silent Operation, Unwavering Stability

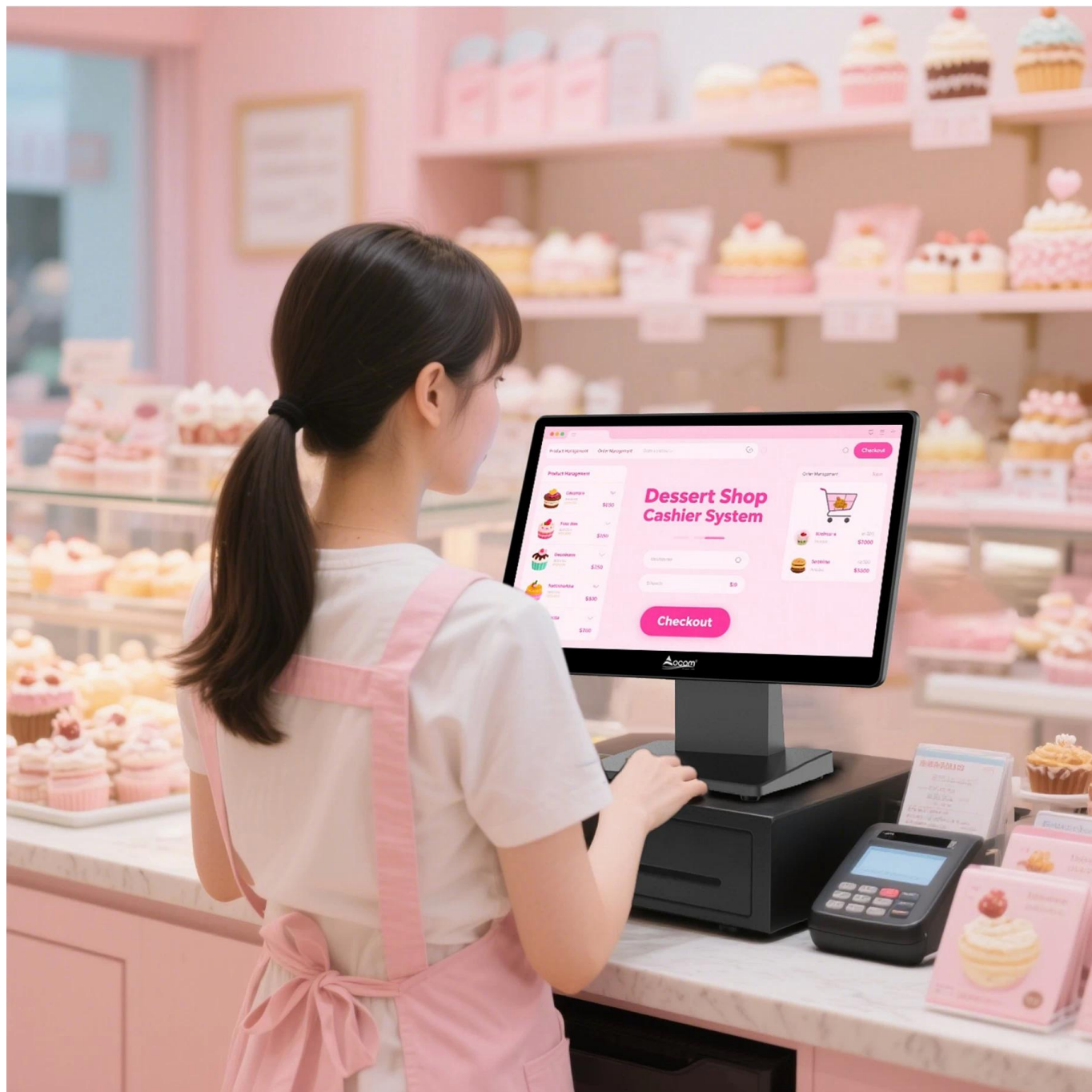
Fanless design, silent and dustproof



Crystal-Clear Communication Engaging Interactions



Original 80db high-fidelity speaker included,
clear information transmission



APPLICATION



“

18+ YEARS

OEM/ODM EXPERIENCES

4000+

CUSTOMERS OVER 165 COUNTRIES

15,000,000+

UNITS OF ACCUMULATED SALES

CERTIFICATES

BY ISO/CE/FCC/ROHS/BIS...

”

CERTIFICATE

OUR COMPANY



Assembly Lines



Aging Test



Warehouse



Strong R & D



Professional Sales

