

# Z90 Bill Payment Machine Handheld Smart Android Pos Terminal With NFC

(M/N:POS-Z90)

## Feature:

- | Android 5.1 operating system;
- | Quad core Qualcomm MSM8909;
- | 5.0 inch touch screen;
- | Long standby battery capacity is 2800mAh;
- | 58mm thermal receipt printer;
- | 5 million pixels camera;
- | 2G /3G/4G Wifi, Bluetooth communication;
- | Optional fingerprint reader;
- | Integrated magnetic card reader, induction IC card reader and contact IC card reader;
- | Passed the EMV L1 L2, PCI and PBOC bank payment certification.

## Application :

apply chain supermarkets, restaurants, convenience stores, clothing store, premises, bakery, cashier, pay, enters sells saves the business management function.

## Technical Specification:

Basic Information	
Operating system	Android 5.1
CPU	Quad core Qualcomm MSM8909

RAM	RAM:1GB
Extended stored	FLASH:8GB
Display screen	5.0 inch
Touch screen	Capacitive touch screen, support the electronic signature
Battery	Lithium battery 2800mAh, 7.4 V
Power supply	Input: 100-240VAC; Output: 5VDC, 2A
Bluetooth	Bluetooth 4.0
Camera	5 mega-pixel camera
Positioning function	GPS AGPS WLAN for Positioning
Printer	58mm thermal printer with 30mm diameter Paper roll
MDM	Mobile Device Management
Interface	Micro USB (mini USB for factory)
Cradle [optional]	WIFI station, charging, qr code scanner
POS Function	
Magnetic card reader	Full track magnetic card reader Support ISO7811/7812,AAMVA protocol
IC card read-write	Support ISO7816 protocol
Non-contact card reader	Support ISO/IEC 14443 Type A&B, ISO18092, Mifare, felica card, in line with the EMV/PBOC PAYPASS specification
PSAM Card	Bank security payment chip card
Certification	Unionpay card acceptance terminal network detection PCI certification EMV/PBOC3.0 L1 and L2 certification EMV/qPBOC3.0 L1 and L2 certification Unionpay intelligent safety standards point-of-sale terminals
Network Parameters	
Network Type	GSM, WCDMA, TD-SCDMA, FDD-LET, TDD-LTE
Network Spectrum	GSM850/900/1800/1900
	WCDMA2100/1900/900/850
	TD-SCDMA B34/B39
	FDD-LTE B1/B2/B3/B4/B5/B7/B8/B20
	TDD-LTE B38/B39/B40/B41

WLAN	IEEE802.11.b/n/g
Sam Slot	2 (one is sam&sim combined)
Sim Slot	2 (one is sam&sim combined)
Physical Parameters	
Size	191mm×80mm×46mm
Weight	650g
Operating Temp	-20°C ~ 60°C
Storage Temp	-40°C ~ 80°C
Humidity	10%~90% RH non-condensing





POS-Z90





# POS-Z90





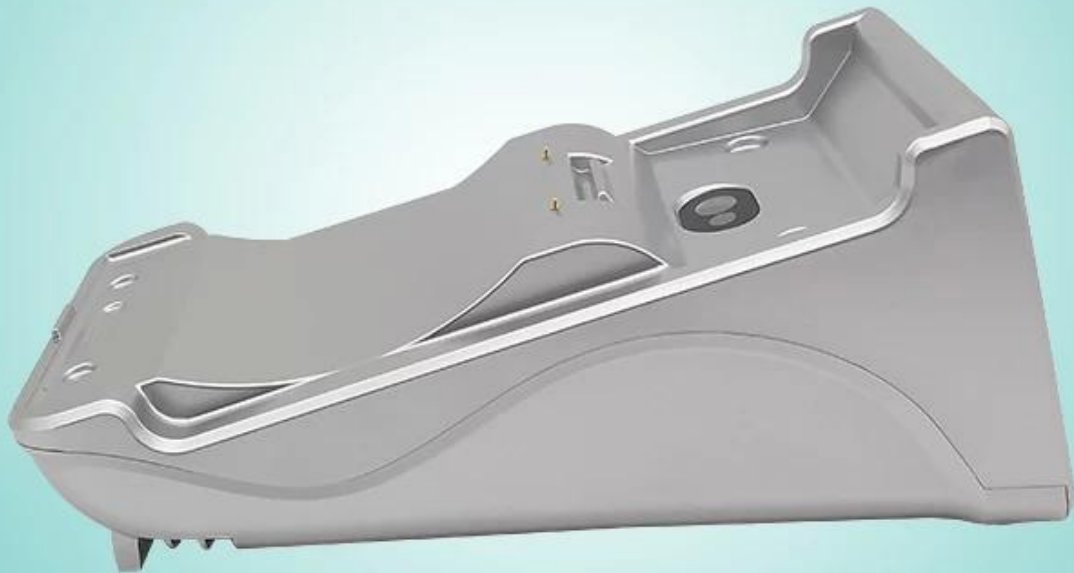
# POS-Z90







POS-Z90



## **ABOUT US:**

OCOM is a leading One-stop POS and Auto-ID Related Products Supplier which is qualified by Global Fortune 500 company. We have Top 1 level Trade Assurance guarantee.

OCOM's products portfolio covers Thermal Printer, Barcode Printer, DOT Matrix Printer, Barcode Scanner, Data Collector, POS Machine and other POS



Peripherals products, which are widely used for retailing, restaurant, bank, lottery, transportation, logistics, and other applications. We have ISO, CE, FCC, BIS and other required certifications.

Since established in June 2007, OCOM have been sticking to the quality system of ISO9001: 2008. We focus on reliable products quality and competitive price. We were serving more than 2300 customers over 159 countries, 50 of them are the biggest distributors in their territory. Our main markets are in Europe, Australia, and fast growing South America and Africa. The customer list includes famous Unilever, O2, Equicom...

OCOM's mission is to be the compelling choice for our partners, based on our three basic beliefs "Integrity based, Strive for excellence, Win-win cooperation", we would like establish stable and reliable partnerships with customers all over the world. OEM/ODM is welcome.

Together we quest for the best.

## ▶ Company



## ▶ Certificates



## ▶ Payment



## **Why you choose us?**

- Leading One-stop supplier for POS related products with wide products range;
- Qualified by Global Fortune 500 Companies;
- Tier 1 customers including Unilever, O2, Star ...
- 2600+ customers cover 163 countries;
- Professional sales team and fast respond within 24 hours;
- Strong R&D with 12 years OEM/ODM experience;
- Efficient and flexible manufacturing ensure short lead time;
- Reliable Quality with ISO 9001, FCC, CE , Rohs, Soncap, SASO, POA, BIS Certificates ;
- Flexible cooperation without MOQ limitation, different quantity different price;
- No worry after sales with 12+1 months warranty and online technical support;
- Shortlisted in "China Best Employer"
- Belief: "Integrity Based, Strive for Excellence, Win-win Cooperation" for long term cooperation.



## **FAQ:**

### 1. MOQ policy

No MOQ limitation for the standard products, but the unit price is different, bigger quantity better price.

For customized production, you can discuss the MOQ with our sales representative directly.

### 2. Sample Availability & Policy

After customers confirmed the specification, we are very glad to provide samples for testing and qualification.

All samples should be paid before shipment, the samples price is a higher than mass order. When the mass order placed, we can return you the samples cost, or send you more piece products with the shipments.

You can buy the samples from us directly using t/t, western union, or paypal.

### 3. Warranty

OCOM is dedicated to providing most cost-effective products and services with reliable quality that will meet customers' satisfaction;

We was qualified by global fortune 500 company, and we have the top 1 level trade assurance which 100% protect your money and lead time.

Our warranty of the products is about 12+1 months from the shipment normally, some designated models can have as long as 24 months warranty; Any product within 30 days of delivery failure occurs shall be deemed invalid delivery (DOA). DOA products will give priority to the replacement, and shipped by courier.

For mass order, we would like to supply some spare parts with shipment for local quickly repair. And after that, you can returned failure parts for rework and analysis.

#### 4. Payment Terms

For mass order, you can pay us by using T/T, LC, Western Union, Escrow or others. About samples order, T/T, Western Union, Escrow,Paypal are acceptable.Escrow Service is powered by Alipay.com.

#### 5. Shipment

We accept all kinds of shipping ways including: express, air, sea, truck, or pick up by customers personally.

**Contact us you will get what more than you can see !**