

## 80 milímetros de alta velocidade com Auto-cortador Pos térmica impressora de recibos (Modelo: OCPP-804)

### Especificação:

Método de impressão	Térmica direta
Tamanho dos caracteres	ANK, Fonte: 12 * 24dots, FontB: 9 * 17dots
Capacidade Coluna:	576dots / linha OU 512dots / linha
Character set	PC347 (Europe padrão), Katakana, PC850 (multilingue), PC860 (Português), PC863 (Canadian-Francês), PC865 (Nordic), Europa Ocidental, grego, hebraico, Europa Oriental, Irã, WPC1252, PC866 (cirílico # 2) , PC852 (Latin2), PC858, IranII, letão, árabe, PT151 (1251)
Barcode	UPC-A / UPC-E / JAN13 (EAN13) / JAN8 (EAN8) / CODABAR / ITF / CODE39 / Code93 / CODE128, QR code
A velocidade de impressão	260 milímetros / seg
Receba tampão	64k bytes
NV flash	128k bytes
Largura do papel	79,5 ± 0,5 milímetros
MCBF (vida)	100 km
Comando de impressão	Compatível com ESC / POS
Controle gaveta de dinheiro	DC 12-24V / 1A
Espessura do papel	0.06-0.08mm
Cortador	Cortador automático
Papel de rolo	79,5 ± 0,5 milímetros * φ83mm
Interface	Serial / paralela / USB
Motorista	Win 9X / ME Win / Win 2000 / Win 2003 / Win NT / Win XP / Win Vista / win 7 / Linux
Fonte de energia	DC24V / 2.5A
Entrada do adaptador de energia	AC 110V / 220V, 50 ~ 60 Hz; Saída: DC 24V / 2.5A
Dimensão	200x145x137mm
Peso Líquido	1,56 kg

### Detalhes Do Produto:



**80mm Thermal Receipt Printer  
with Auto-Cutter**  
**OCP-804**



**Product Picture**





## Features

**Simple but not easy**

Waterproof, oil proof, dustproof



Print head life: 100km



Can print QR code



USB + Serial + LAN together  
or USB, or Serial, or LAN, or Parallel



260mm/sec high printing speed



Print head life: 100km  
Compatible with EPSON ESC/POS



### All-round show





## Application Area

Food delivery, restaurant, Traffic Citation, Logistics, Transportation, Warehouse management, Delivery, Illegal Parking Ticket, Drugstore, Price Tag, Retail/Farm



## Parameter

<b>Printing method</b>	Direct thermal
<b>Character size</b>	ANK,FontA:12*24dots,FontB:9*17dots
<b>Column capacity:</b>	576dots/line OR 512dots/line
<b>Character set</b>	PC347(Standard Europe), Katakana,PC850(Multilingual), PC860(Portuguese), PC863(Canadian-French), PC865(Nordic), West Europe, Greek, Hebrew, East Europe, Iran, WPC1252, PC866(Cyrillic#2), PC852(Latin2), PC858, IranII, Latvian, Arabic, PT151(1251)
<b>Barcode</b>	JUPC-A/UPC-E/JAN13(EAN13)/JAN8(EAN8)/CODABAR/ITF/COD E39/CODE93/CODE128, QR code
<b>Printing speed</b>	260mm/sec
<b>Receive buffer</b>	64k bytes
<b>NV Flash</b>	128k bytes
<b>Paper width</b>	79.5±0.5mm
<b>MCBF(life)</b>	100km
<b>Printing command</b>	Compatible with ESC/POS
<b>Cash drawer control</b>	DC 12-24V/1A
<b>Paper thickness</b>	0.06-0.08mm
<b>Cutter</b>	Auto Cutter
<b>Roll paper</b>	79.5±0.5mm* 60mm

<b>Roll paper</b>	76.2x20.5mm φ80mm
<b>Interface</b>	Serial + USB + LAN
<b>Driver</b>	Win 9X/Win ME/Win 2000/Win 2003/Win NT/Win XP/Win Vista/win 7/Linux
<b>Power supply</b>	DC24V/2.5A
<b>Power adapter input</b>	AC 110V/220V, 50~60Hz; Output: DC 24V/2.5A
<b>Dimension</b>	200x145x137mm
<b>Net Weight</b>	1.56kg

## Paper Roll Installation

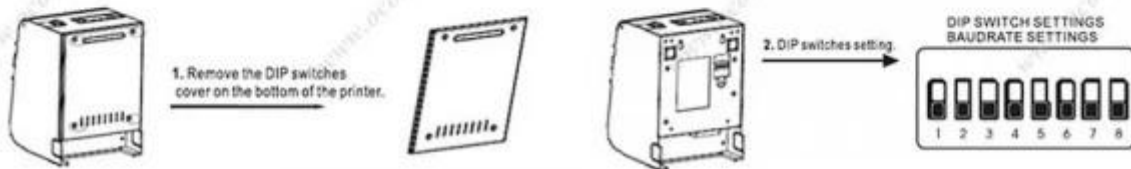


- A Open the printer cover.
- B Install the roller in the roll paper, and put them into the printer.
- C Pull out some paper outside the printer and then close the printer cover.
- D Close the top cover. Press the printer cover to avoid error position of roll paper.

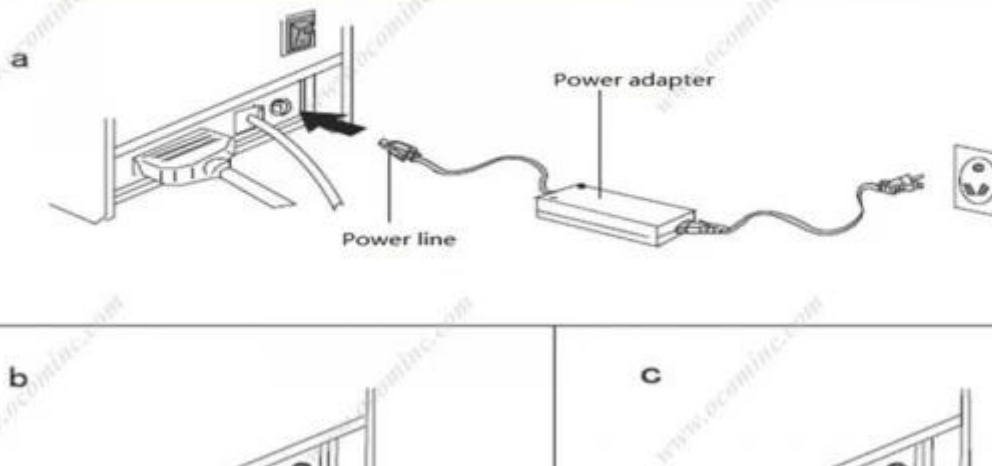


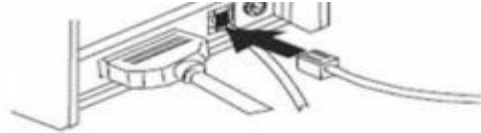
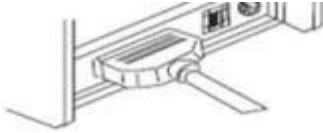
## Setting the Printing Mode(DIP switches):

The DIP switches are used to set the printer to perform various functions, such as cutter mode, character set, speed, beeper, print density and etc.



## Connection





- a. Plug the DC cord connector into the printer's power connector..
- b. Plug the data cable connector into the printer's interface connector.
- c. Plug the drawer cable into the drawer kick-out connector on the back of the printer next to the interface connector.

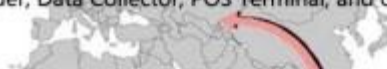
## Shipping and payment

1. Air, Sea, Express(DHL, FedEx, UPS, EMS, TNT and so on)
2. EXPRESS: around 3-7 working days to arrive
3. INTERNATIONAL AIR MAIL: usually around 2-4 days to arrive, will also depend on which destination port
4. By sea: depend on which destination port
5. T/T
6. Western Union
7. Escrow
8. L/C

## Company Profile



OCOM Technologies Limited is a professional supplier specialized in POS and Auto-ID applications. Our products portfolio covers Barcode Scanner, Barcode Printer, Thermal Printer, Dot Matrix Printer, Magnetic Card Reader, Data Collector, POS Terminal, and other IOT products.





We have FCC, CE, RoHS, and other certifications. We have sell our products to West Europe, North American, Africa, Asia-Pacific and other countries.

OCOM has professional teams including marketing, R&D, quality control, production and sales service. All of the sales representatives have 3 to 10 years experience in international trading, which help us to meet the customers' needs.

OCOM have been sticking to the quality system of ISO9001:2008. We conduct strict IQC, IPQC and OQC inspection in every industrial procedure. Based on our strong capacity, the normal lead time for main products is about 3 to 7 days even for bulk order.

You can find more information of us at: [www.ocominc.com](http://www.ocominc.com),

Together we quest for the best.



## Documentos relevantes:

[\\*Especificação](#)

[\\*Endereço IP Configurar manual](#)

[\\*Instrução Manual](#)

[\\* Driver para todo o sistema de janelas](#)

[\\*Driver para Linux](#)

[\\*Parâmetros de configuração da impressora Ferramentas](#)

[\\*CD Arquivos](#)