

Portátil UAndroid POS terminal com Terminal Etiqueta e Recibo impressora

(S/N:POS -T2)

Recursos:

1. **núcleo deca** Processador MT6797 Tri-Cluste-A72*2A53*8 2,3 GHz
2. Térmica de 58 mm de alta Velocidade integrada **recibo e etiqueta** Impressora
3. Padrão **3 GB BATER** 16G ROM
4. Alto-falante embutido de grande volume
5. Módulo NFC integrado
6. **2*SIM** slot para cartão
7. Suporta USB tipo-C **carregamento rápido**
8. **6400mAh removível** grande capacidade **cobalto puro** bateria
9. Leitor de código de barras 1D e 2D e impressora digital para opções

Especificação

Modelo	- T2
Nome	5,5 polegadas tela de toque capacitiva, apoiar a assinatura eletrônica
Bateria	3.8 V/ 64 00mAh
Adaptador de energia	Entrada□100-240V , 50/60 Hz ,1,5A Saída□ 5 V DC /2 A
interface do carregador	USB tipo C
Tela principal	Tela sensível ao toque HD de 5,5 polegadas exibir
Resolução	720*1280 IPS
Desempenho	
CPU	Processador Deca-core MT6797 Tri-Cluste-A72*2A53*8 2,3 GHz
RAM	3 GB
Instantâneo	Flash de 16 GB
Comunicação	2G/3G/ 4G
Sistema operacional	Android 8,0
Botão	Botão liga/desliga, botão Digitalizar ,botão de volume
Bluetooth	bluetooth 4.0
WI-FI	WIFI 802.11 b.g.n.ac
Impressora	Recibo Térmico 58mm e etiqueta Impressora
Rolo de papel	Largura: 58mm; Diâmetro: ≤40mm
scanner	5 megapixels Decodificação da câmera , Scanner 2D (Opção)
NFC	Suporte ISO/IEC 14443A&B, Mifare, cartão felica
slot SIM	Sim*2 (padrão) ou Sim*1Sam*1 para opção
Alto falante	Alto-falante de áudio digital
impressão digital	FBI/STQC impressão digital (Opcional)
GPS ou AGPS	Suporte GPS AGPS
MDM	Apoio, suporte
Acessórios Periféricos	
Acessórios	USB Tipo C*1 Carregando adaptador*1 manual do usuário *1

Ambiente	
Temperatura de operação	de 0 a 40 graus centígrados
Temperatura de armazenamento	de - 10 a 60 graus centígrados
Umidade de trabalho	10%~80%
Umidade de armazenamento	de 10%~90%

Detalhes do produto

Built-in MDM Control System



Fingerprint Security

Ministry of Public Security or FBI fingerprints (Optional)

70%

Sensitive
Ascension

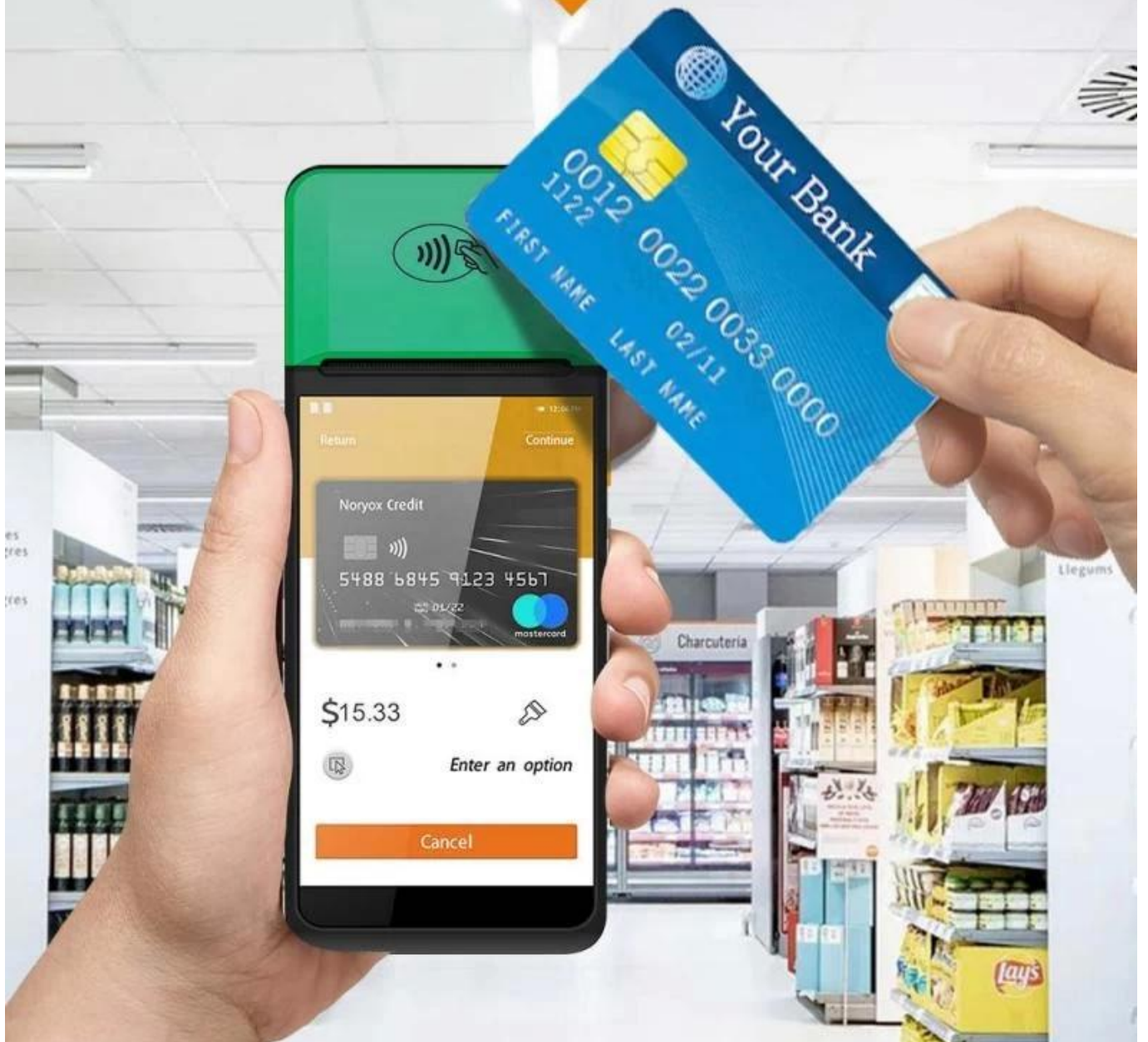


Fingerprint ID



NFC Contactless Card

NFC contactless card reader payment function



Double Frequency WFI

Double insurance of 4G high Speed network and dual-frequency WIFI network can ensure the real-time data communication in different using environment



2.4G 5G



Structure specification

SMART PRINTING



Simple construction Easy operation



Large Capacity Battery

Removable 6400mAh large capacity pure cobalt battery



Dimensions

SMART PRINTING



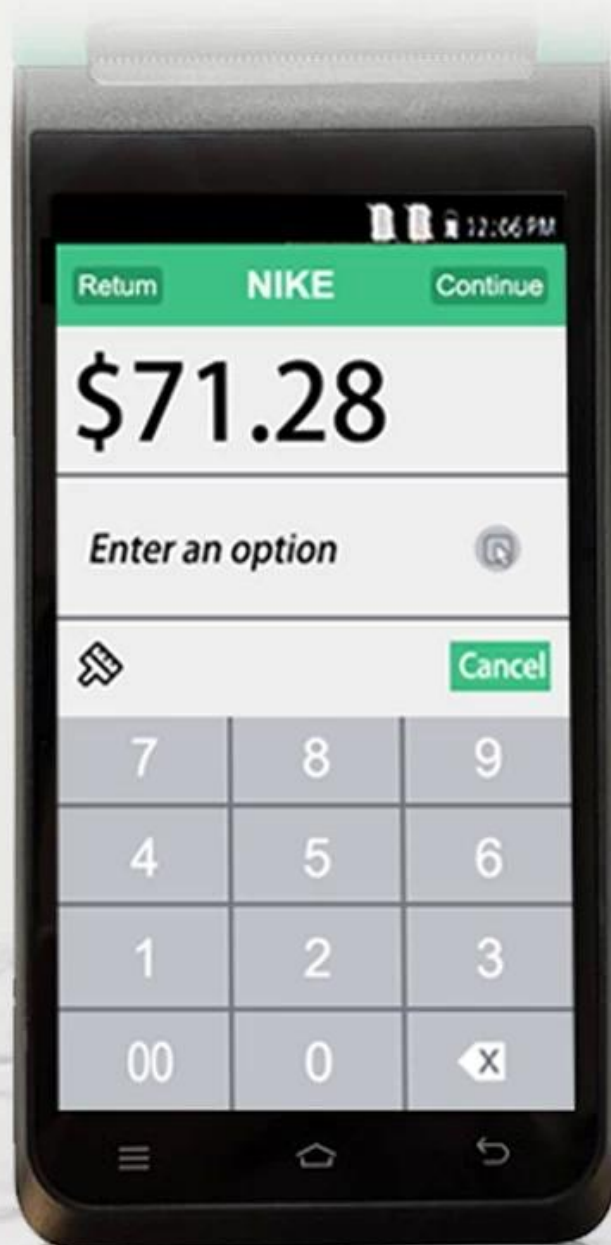
197*82*57.5mm



Manual measurement has slight errors and does not affect the use.

5.5-inch HD IPS Screen

720*1280 resolution, stable every pixel, allowing users to see more clearly



Strong Performance



OS

Android System



Memory

3GB RAM+16GB ROM

Support Download APP from Google Play Store

High Quality and Performance, Your reliable POS



Thermal Receipt / Label Printing

Built-in high speed 58mm thermal receipt and label printer



Large paper bin Print more durable

Can accommodate 42mm diameter thermal paper to avoid frequent paper changes and improve printing efficiency.

58mm

Maximum
paper width

42mm

Maximum
paper diameter



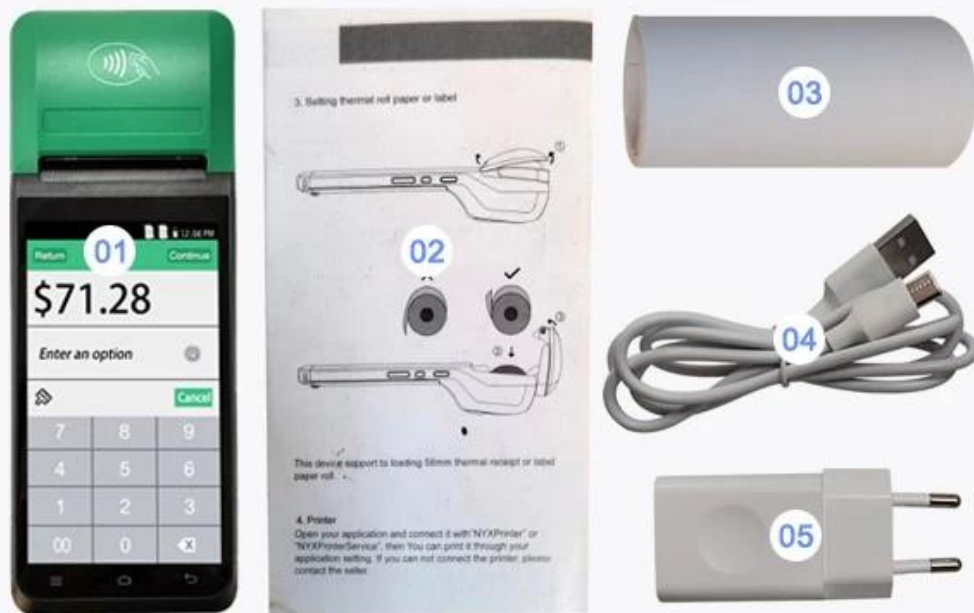
■ SMART PRINTING

Packaging accessories

SMART-PRINTING



Beautiful packaging, original accessories

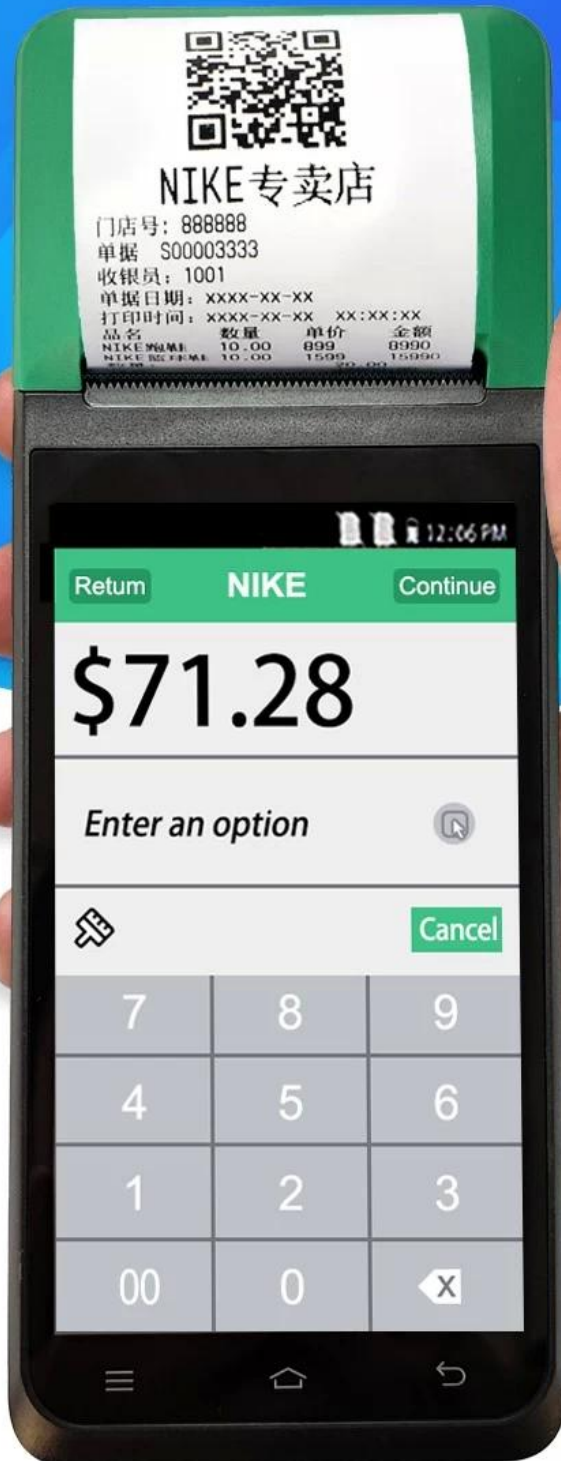


01 Machine 02 User Manual 03 Roller Paper

04 Type C Cable 05 Charging Adaptor

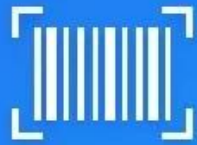
SMART Handheld POS Terminal

MULTI-PLATFORM AUTOMATIC PRINTING
easy to deal with a variety of working environment



5 Million Rear HD Camera

HD camera quickly identify barcodes QR codes
record important information
2D Barcode scanner for optional



Scan code



Photo



Video





Thermal Receipt Label Printing



Touch HD Screen



Multi-version Connection



5 Million Pixels



Large Volume Speaker



Large Capacity Battery



NFC Standard



CPU Deca-core

Multiple versions Connection options

Support full Net-com, Bluetooth, WIFI multiple versions of connection, Excellent experience



Support WIFI

Support Bluetooth 4.0

2G/3G/4G communication for optional

