

# PorTátil Android POS terminal com T hermal Etiqueta e Recibo impressora

(S/N:POS -T2)

## Características:

1. **núcleo deca** Processador MT6797 Tri-Cluste-A72\*2A53\*8 2,3 GHz
2. Térmica de 58 mm de alta Velocidade integrada **recibo e etiqueta** Impressora
3. Padrão **3 GB BATER** 16G ROM
4. Alto-falante embutido de grande volume
5. Módulo NFC integrado
6. **2\*SIM** slot para cartão
7. Suporta USB tipo-C **carregamento rápido**
8. **6400mAh removível** grande capacidade **cobalto puro** bateria
9. Leitor de código de barras 1D e 2D e impressora digital para opções

## Especificação

Modelo	- T2
Nome	5,5 polegadas tela de toque capacitiva, apoiar a assinatura eletrônica
Bateria	3.8 V/ 64 00mAh
Adaptador de energia	Entrada□100-240V , 50/60 Hz ,1,5A Saída□ 5 V CC /2 A
interface do carregador	USB tipo C
Tela principal	Tela sensível ao toque HD de 5,5 polegadas exibir
Resolução	720*1280 IPS
<b>Desempenho</b>	
CPU	Processador Deca-core MT6797 Tri-Cluste-A72*2A53*8 2,3 GHz
RAM	3 GB
Clarão	Flash de 16 GB
Comunicação	2G/3G/ 4G
Sistema operacional	Android 8,0
Botão	Botão liga/desliga, botão Digitalizar ,botão de volume
Bluetooth	bluetooth 4.0
WI-FI	WIFI 802.11 b.g.n.ac
Impressora	Recibo Térmico 58mm e etiqueta Impressora
Rolo de papel	Largura: 58mm; Diâmetro: ≤40mm
scanner	5 megapixels Decodificação da câmera , Scanner 2D (Opção)
NFC	Suporte ISO/IEC 14443A&B, Mifare, cartão felica
slot SIM	Sim*2 (padrão) ou Sim*1Sam*1 para opção
Palestrante	Alto-falante de áudio digital
impressão digital	FBI/STQC impressão digital (Opcional)
GPS ou AGPS	Suporte GPS AGPS
MDM	Apoiar
<b>Acessórios Periféricos</b>	
Acessórios	USB Tipo C*1 Carregando adaptador*1 manual do usuário *1

Ambiente	
Temperatura de operação	de 0 a 40 graus centígrados
Temperatura de armazenamento	de - 10 a 60 graus centígrados
Umidade de trabalho	10%~80%
Umidade de armazenamento	de 10%~90%

## Detalhes do produto

# Built-in MDM Control System



# Fingerprint Security

Ministry of Public Security or FBI fingerprints (Optional)

70%

Sensitive  
Ascension

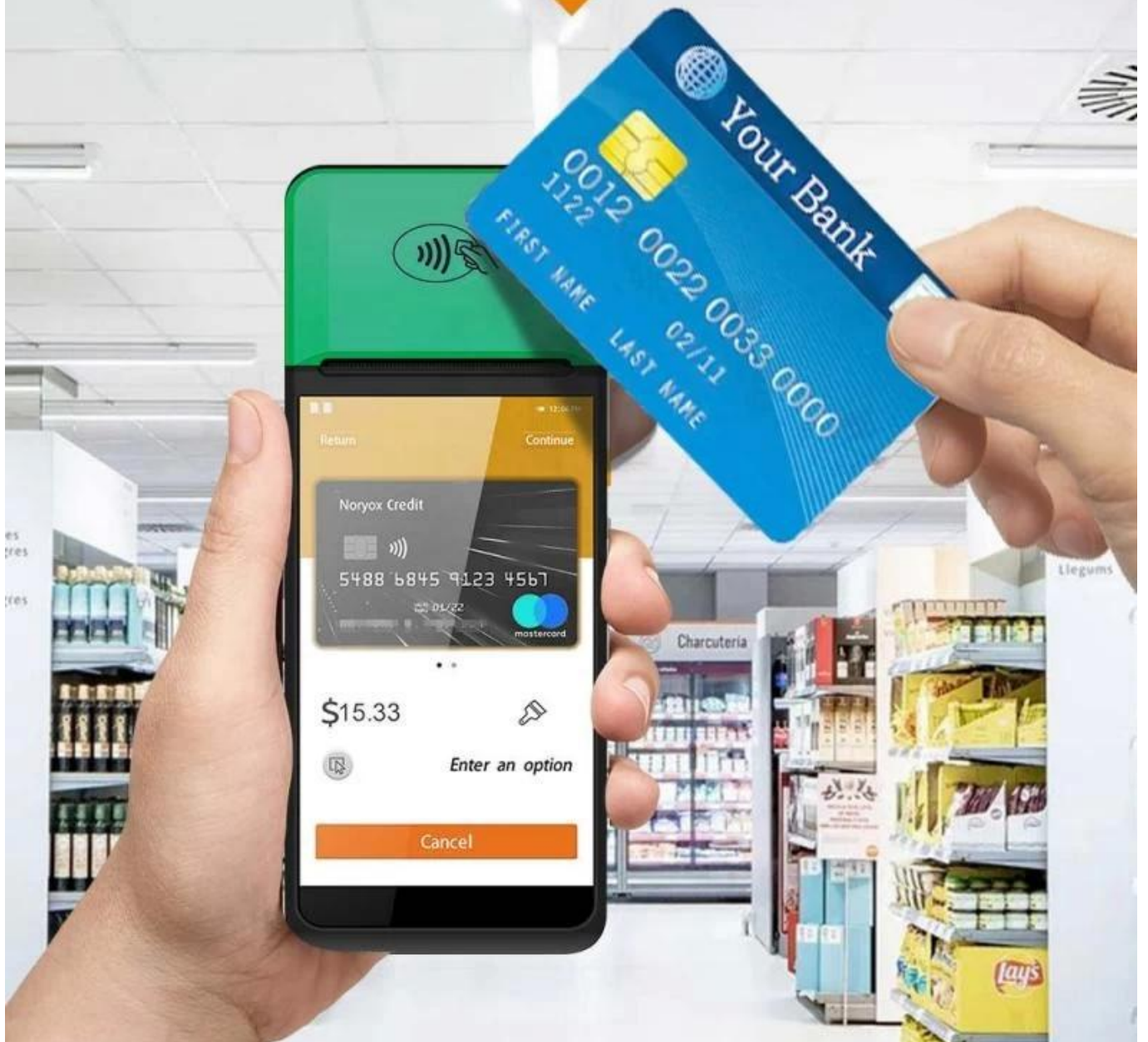


Fingerprint ID



# NFC Contactless Card

NFC contactless card reader payment function



# Double Frequency WFI

Double insurance of 4G high Speed network and dual-frequency WIFI network can ensure the real-time data communication in different using environment



2.4G 5G



# Structure specification

SMART PRINTING



Simple construction Easy operation



# Large Capacity Battery

Removable 6400mAh large capacity pure cobalt battery



# Dimensions

SMART PRINTING



197\*82\*57.5mm

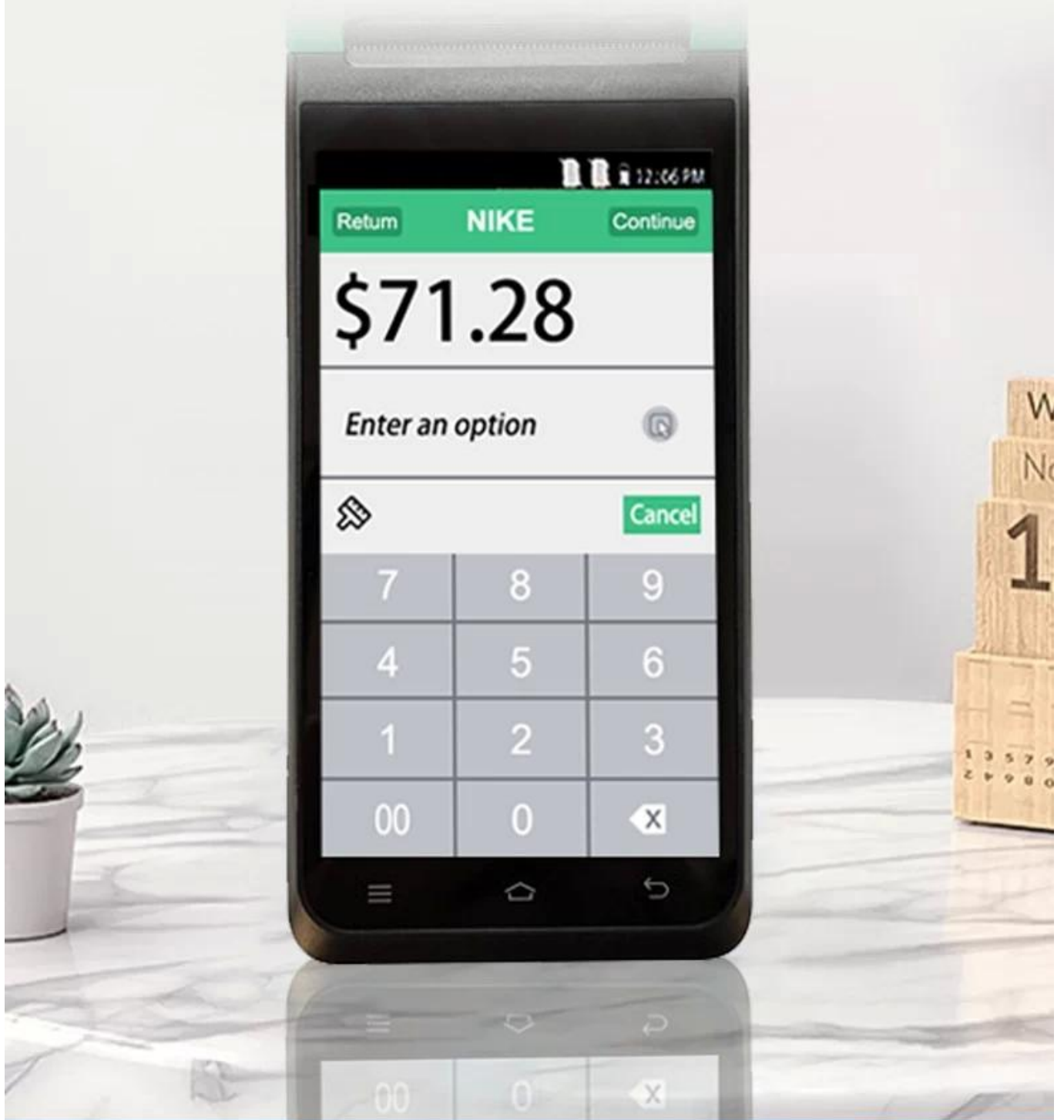


Manual measurement has slight errors and does not affect the use.



# 5.5-inch HD IPS Screen

720\*1280 resolution, stable every pixel, allowing users to see more clearly



# Strong Performance



**OS**

Android System

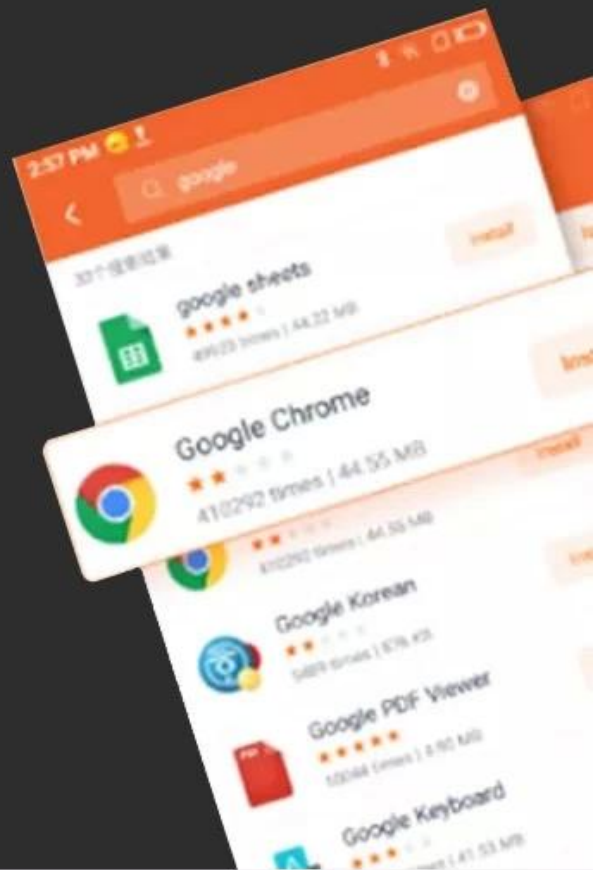


**Memory**

3GB RAM+16GB ROM

# Support Download APP from Google Play Store

High Quality and Performance, Your reliable POS



# Thermal Receipt / Label Printing

Built-in high speed 58mm thermal receipt and label printer



## Large paper bin Print more durable

Can accommodate 42mm diameter thermal paper to avoid frequent paper changes and improve printing efficiency.

**58mm**

Maximum  
paper width

**42mm**

Maximum  
paper diameter



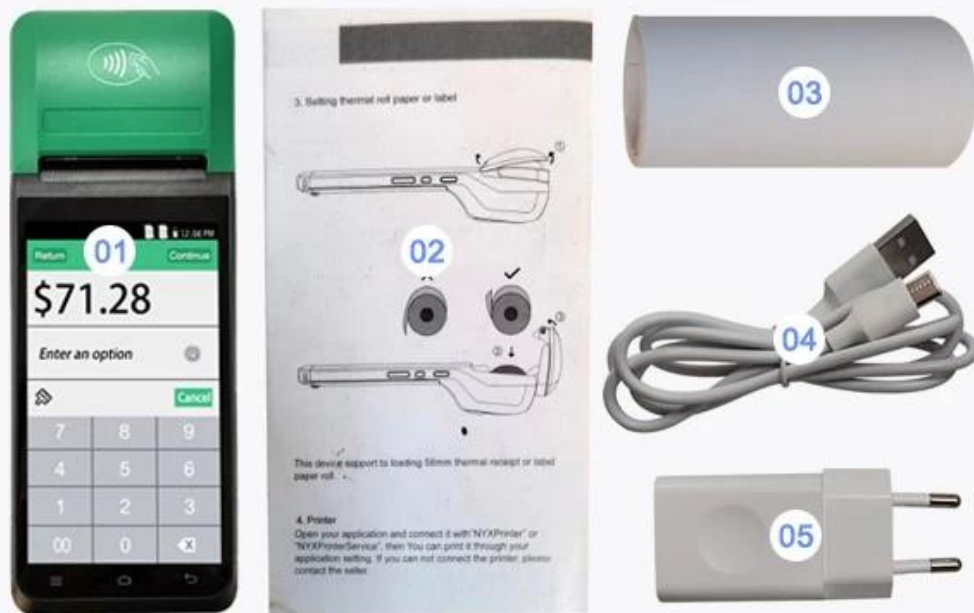
■ SMART PRINTING

# Packaging accessories

SMART-PRINTING



Beautiful packaging, original accessories

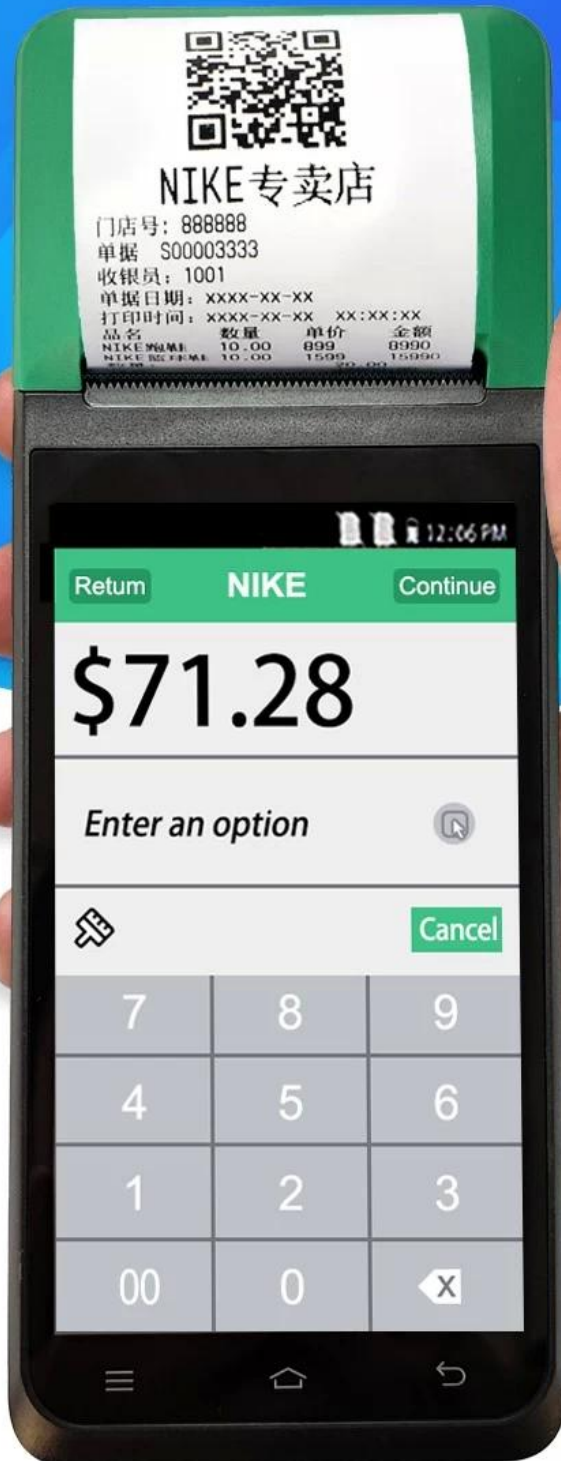


01 Machine 02 User Manual 03 Roller Paper

04 Type C Cable 05 Charging Adaptor

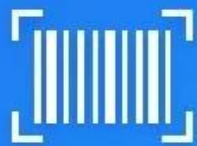
# SMART Handheld POS Terminal

MULTI-PLATFORM AUTOMATIC PRINTING  
easy to deal with a variety of working environment



# 5 Million Rear HD Camera

HD camera quickly identify barcodes QR codes  
record important information  
2D Barcode scanner for optional



Scan code



Photo



Video







Thermal Receipt Label Printing



Touch HD Screen



Multi-version Connection



5 Million Pixels



Large Volume Speaker



Large Capacity Battery



NFC Standard



CPU Deca-core

## Multiple versions Connection options

Support full Net-com, Bluetooth, WIFI multiple versions of connection, Excellent experience

